

LaVIE

Live by the *beach*

BY DUBAI  PROPERTIES

Discover *resort living*
in the heart of JBR

Dubai

Where *luxury*
is redefined, constantly

Which other city can offer a truly unparalleled lifestyle but Dubai?
Being synonymous with international trade, innovation, tourism, retail
and world-class business communities, Dubai has stamped its reputation
as one of the most cosmopolitan cities in the world today.

By offering world-class lifestyles to residents and becoming a safe haven
for investors, it has become an aspirational living destination for millions
of expatriates and a geographic gateway for businesses.





Dubai Properties

Redesigning Dubai's landscape
with *landmark destinations*

A part of Dubai Holding, Dubai Properties was established to develop and manage properties, communities and destinations across Dubai. Through a vast portfolio of residential projects including some of the city's most renowned and iconic real estate destinations, it has built a great reputation of providing enriching lifestyles to the people of Dubai.



Jumeirah Beach Residence

An iconic location

Jumeirah Beach Residence – or JBR as it is popularly known, is among Dubai's most iconic destinations. An urban residential enclave of 40 high-profile towers (35 residences & 5 hotels), it is a vibrant and bustling community offering an exclusive waterfront lifestyle to its residents and one of the most sought-after addresses in the city.





La Vie

Discover resort living in the heart of Jumeirah Beach Residence

There's a reason we love resorts. Scenic surroundings, solitude, splendid views, amenities where you can just unwind and relax, calming sounds of the ocean during the day, and the fun of shopping blissfully or sampling new delicacies from around the world at night.

With La Vie, we've now brought all the trappings of a luxury resort to your door, creating that sense of relaxation and retreat right in your own home. Think of it as a great way to extend your vacation and feel like you never left the resort.

Never feel far away

As part of the expansive Dubai Marina, La Vie's location holds a prime position within the sprawling 1.7 kilometer waterfront community overlooking the Arabian Gulf, being one of the last beachfronts in Dubai.

With quick and easy access to Dubai Marina and The Walk, it boasts of private access to beautiful sandy shores of Jumeirah Beach. Enjoy the ease of connectivity through well-established road networks to major shopping malls, public transport links and schools.



2 MINS

DRIVE TO THE NEAREST SHOPPING MALL



10 MINS

DRIVE TO DUBAI MEDIA CITY



5 MINS

DRIVE TO SHEIKH ZAYED ROAD



20 MINS

DRIVE TO DUBAI INTERNATIONAL AIRPORT





A powerful *design language*

Inspired by Miami modernist architecture, La Vie features delightful aesthetic elements. With an emphasis on effective use of glazing, the elegant interior and exterior spaces inspire awe in residents and visitors alike.







Breathtaking *views*

Wake up to unrivaled views of the sea, Palm Jumeirah, Blue Waters and Ain Dubai. Each of the apartments boasts unbeatable views that are synonymous with luxury and opulence, offering a visual treat that one can never tire of.





A premium lifestyle

Thoughtfully designed and meticulously planned, the 1 to 4-bedroom apartments and penthouses at La Vie pair contemporary design with exquisite interiors. While the living rooms offer panoramic vistas of the sea, designer fittings, spacious bedrooms with en-suite bathrooms and wide sundecks take luxury to a different level.







An extraordinary
retail experience

La Vie, being located in Jumeirah Beach Residence (JBR) is home to a selection of shopping outlets, international cuisine restaurants, boutique cafés and open-air lounges.

With street markets and a series of ongoing fun and family-oriented events taking place in the area throughout the year, life is never dull here.



Live *holiday moments*, at home

Exterior features



Lush landscapes & BBQ area



Long walkways & jogging paths



Generous & welcoming main arrival forecourt/drop-off areas



Close to daycare centers, play areas & community stores



Infinity pool with fabulous sea-views



Shaded kids swimming pool & play area



Elevated community garden

**All amenities are located on the ground level/podium level*









Luxury, inside-out

Interior features



Stand-alone
bespoke gym



Changing rooms
and lockers



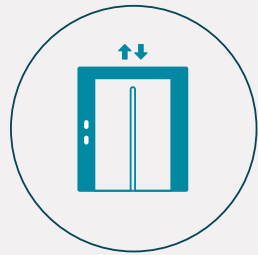
Sauna/Steam
room



Multi-purpose
room



Spacious lobbies with
concierge service



High-speed
elevators



Safe & secure
residential building



*La*VIE

Live by the *beach*

Floor *plans*

1 BEDROOM - TYPE 01 A

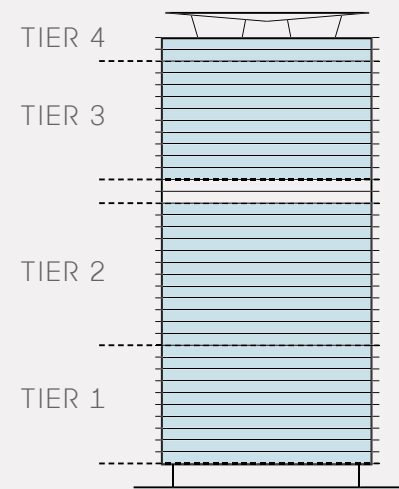
Unit 02 | Levels 01 to 22, 25 to 34

Unit 03 | Levels 35 & 36

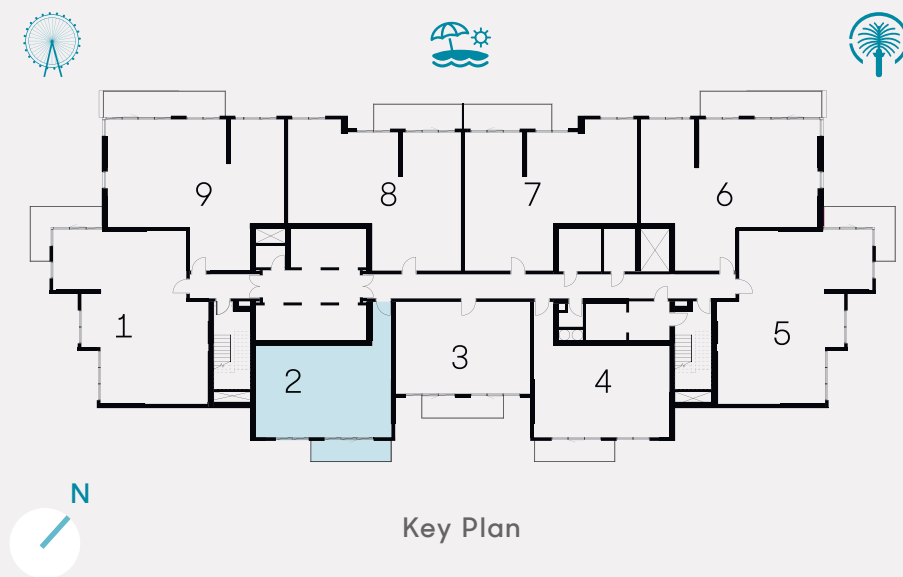
Suite Area 813 sqft 75.56 sqm

Balcony Area 107 sqft 9.91 sqm

Total Area 920 sqft 85.47 sqm



Key Section



Key Plan



1 BEDROOM - TYPE 01 B

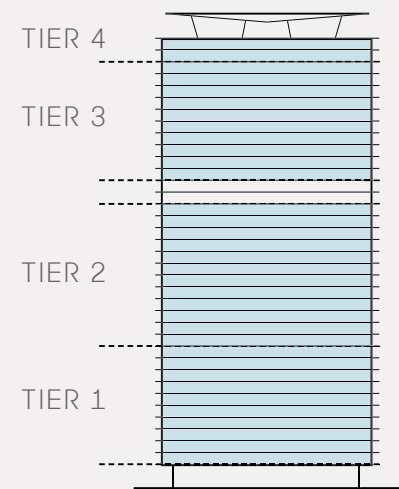
Unit 04 | Levels 01 to 22, 25 to 34

Unit 05 | Levels 35 & 36

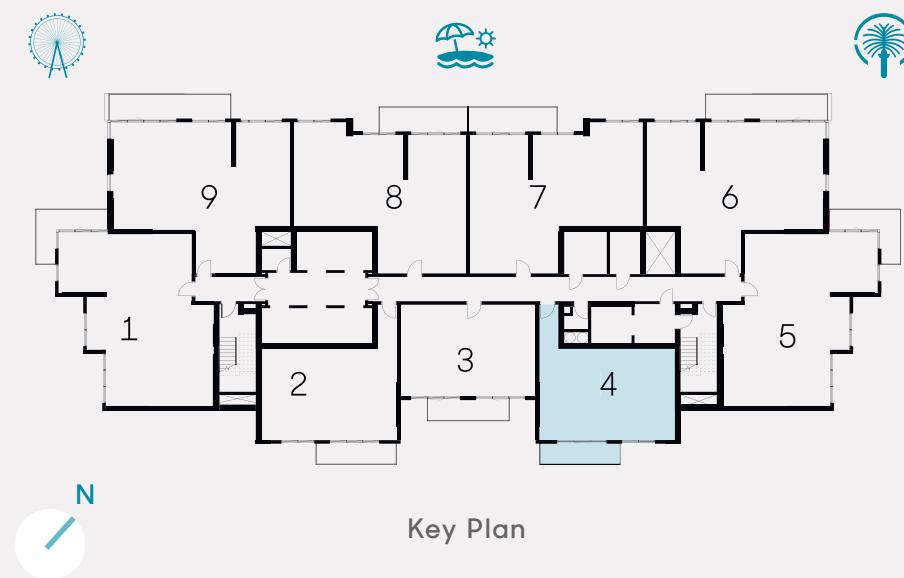
Suite Area 813 sqft 75.56 sqm

Balcony Area 107 sqft 9.91 sqm

Total Area 920 sqft 85.47 sqm



Key Section



Key Plan

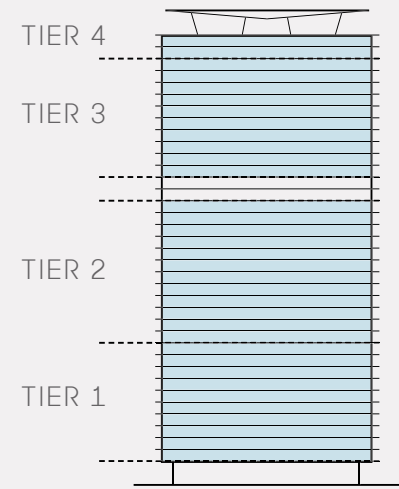


1 BEDROOM - TYPE 02

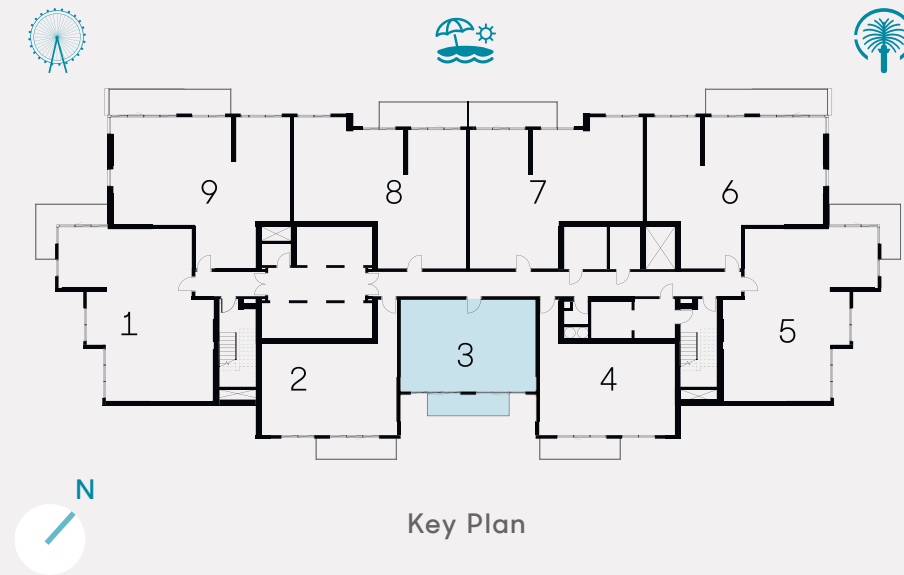
Unit 03 | Levels 01 to 22, 25 to 34

Unit 04 | Levels 35 & 36

Suite Area	741 sqft	68.81 sqm
Balcony Area	109 sqft	10.13 sqm
Total Area	850 sqft	78.94 sqm



Key Section



Key Plan



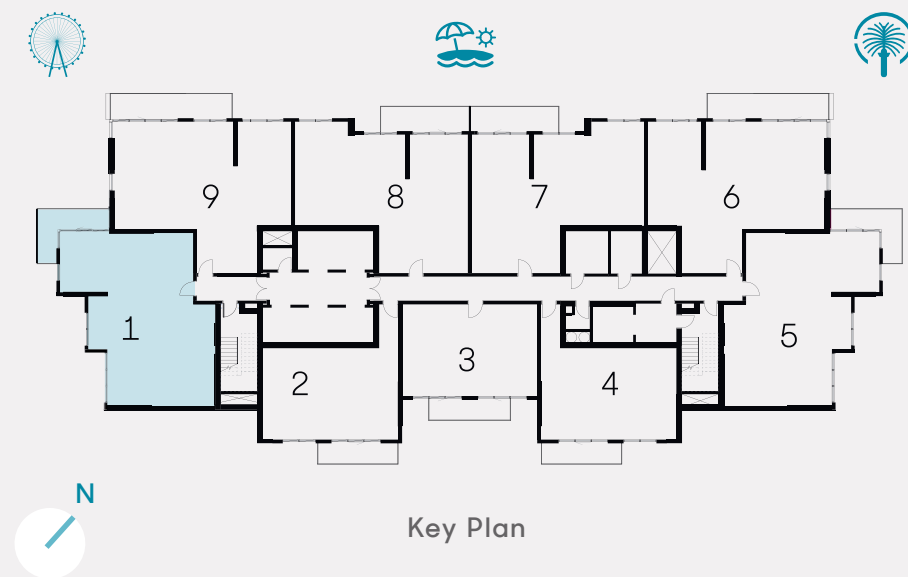
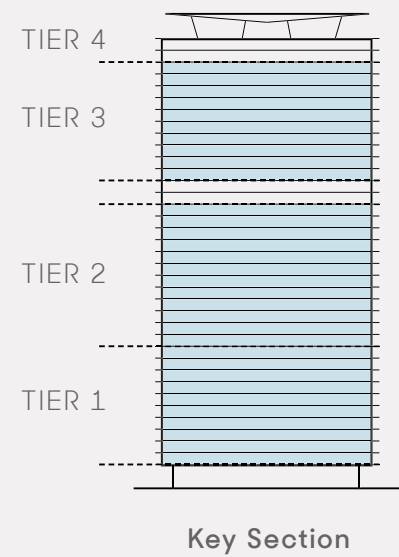
2 BEDROOM – TYPE 01 A

Unit 01 | Levels 01 to 22, 25 to 34

Suite Area 1264 sqft 117.43 sqm

Balcony Area 136 sqft 12.64 sqm

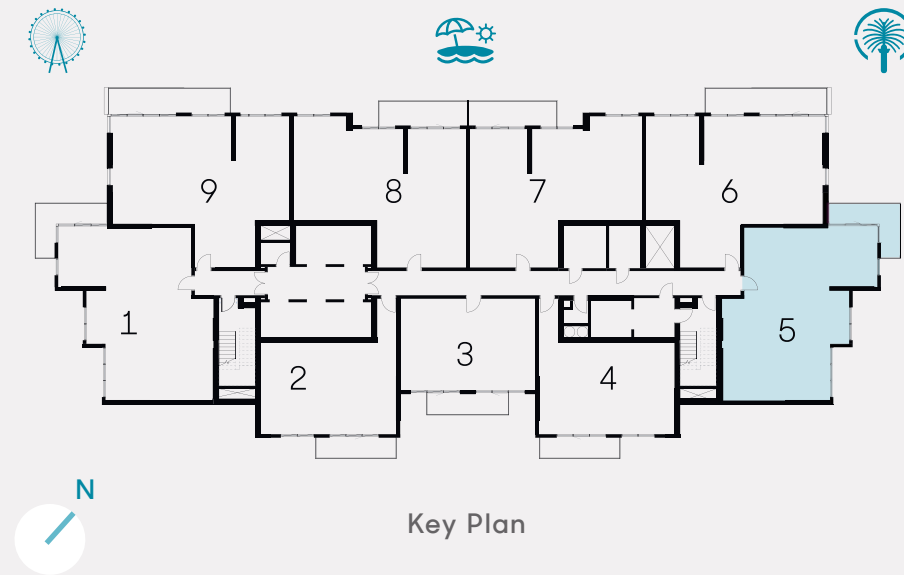
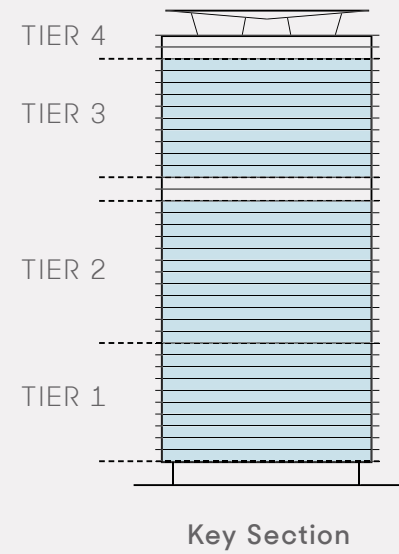
Total Area 1400 sqft 130.07 sqm



2 BEDROOM - TYPE 01 B

Unit 05 | Levels 01 to 22, 25 to 34

Suite Area	1264 sqft	117.43 sqm
Balcony Area	136 sqft	12.64 sqm
Total Area	1400 sqft	130.07 sqm

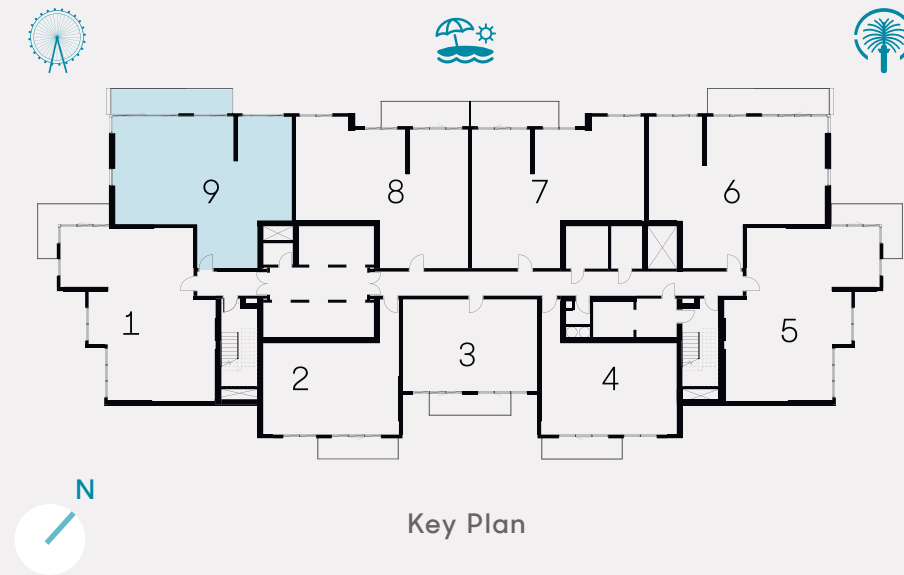
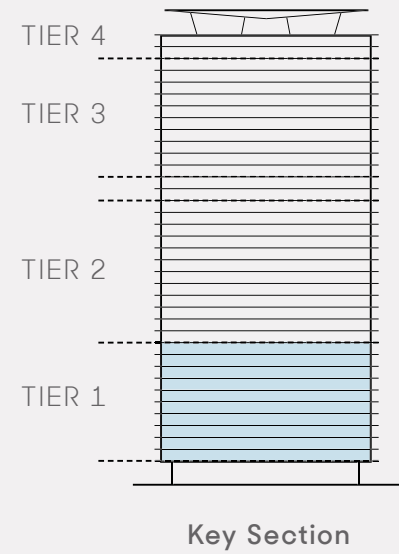


DISCLAIMER: PLANS, DETAILS AND UNIT ORIENTATION INCLUDED ARE INDICATIVE ONLY AND ARE SUBJECT TO CHANGE BY THE DEVELOPER/SELLER AT ITS SOLE DISCRETION WITHOUT NOTICE AND/OR LIABILITY. ALL IMAGES, INCLUDING FEATURES, FINISHES, FURNISHINGS, VIEW AND SCALE ARE ILLUSTRATIVE ONLY. FINAL AREAS, ORIENTATION, DIMENSIONS, LAYOUT AND MATERIALS MAY DIFFER FROM THOSE STATED.

2 BEDROOM – TYPE 02 A

Unit 09 | Levels 01 to 10

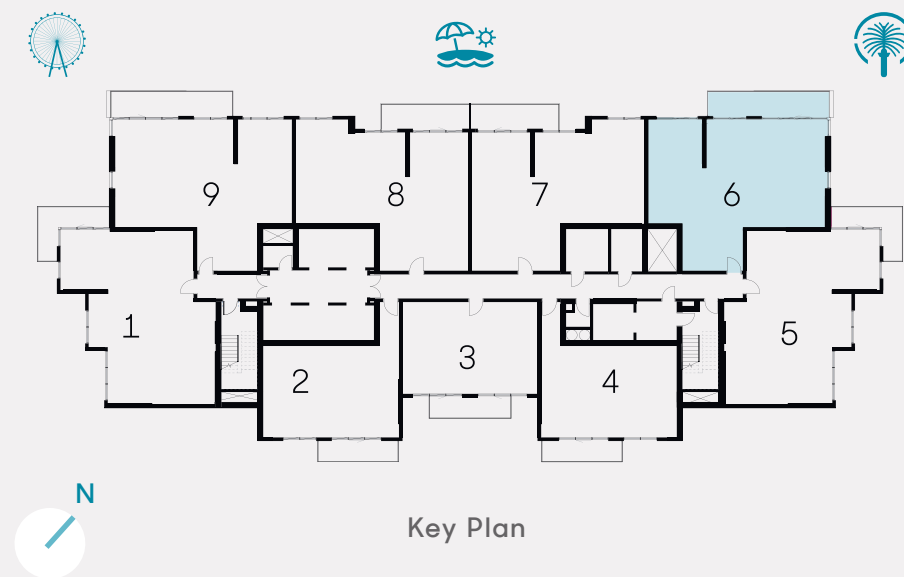
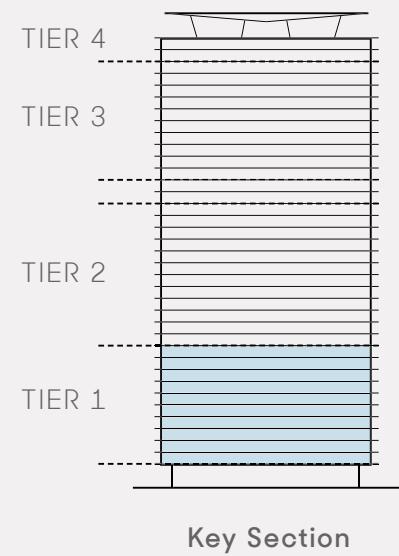
Suite Area	1321 sqft	122.71 sqm
Balcony Area	195 sqft	18.07 sqm
Total Area	1515 sqft	140.78 sqm



2 BEDROOM – TYPE 02 B

Unit 06 | Levels 01 to 10

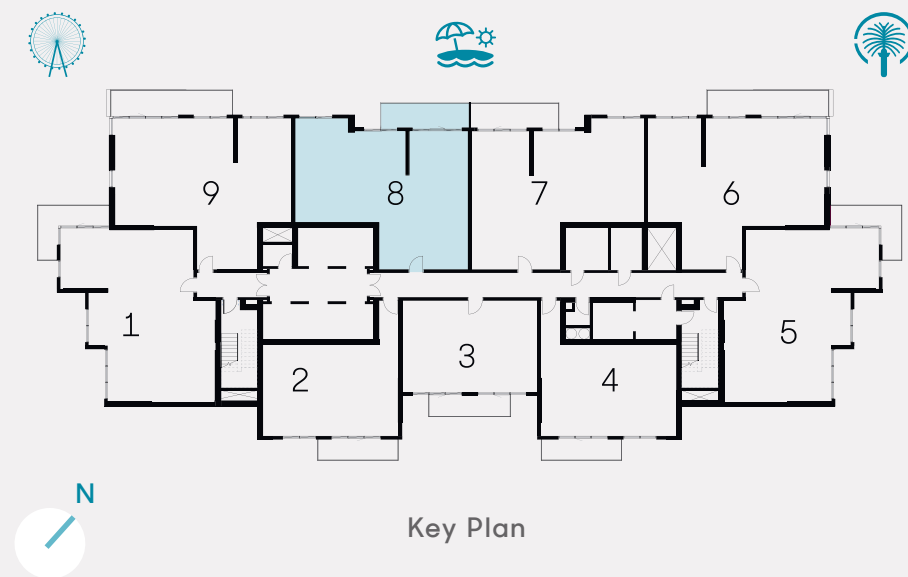
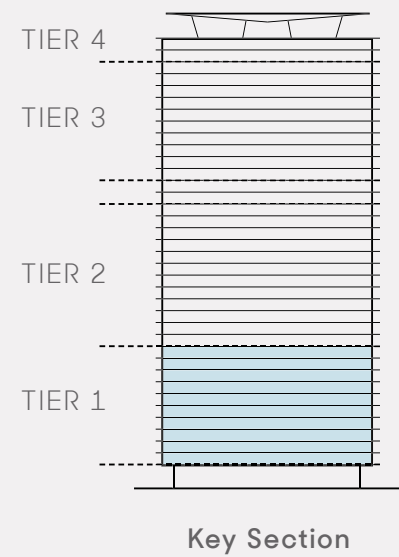
Suite Area	1321 sqft	122.71 sqm
Balcony Area	195 sqft	18.07 sqm
Total Area	1515 sqft	140.78 sqm



2 BEDROOM – TYPE 03 A

Unit 08 | Levels 01 to 10

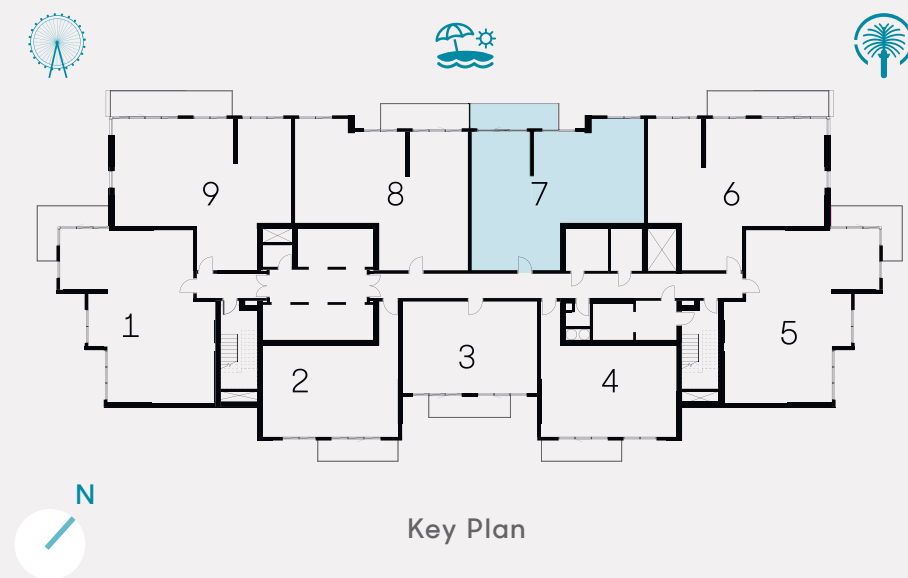
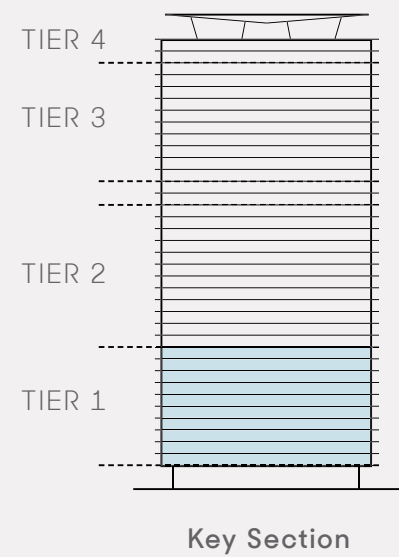
Suite Area	1241 sqft	115.32 sqm
Balcony Area	142 sqft	13.17 sqm
Total Area	1383 sqft	128.49 sqm



2 BEDROOM – TYPE 03 B

Unit 07 | Levels 01 to 10

Suite Area	1241 sqft	115.32 sqm
Balcony Area	142 sqft	13.17 sqm
Total Area	1383 sqft	128.49 sqm



3 BEDROOM - TYPE 01 A

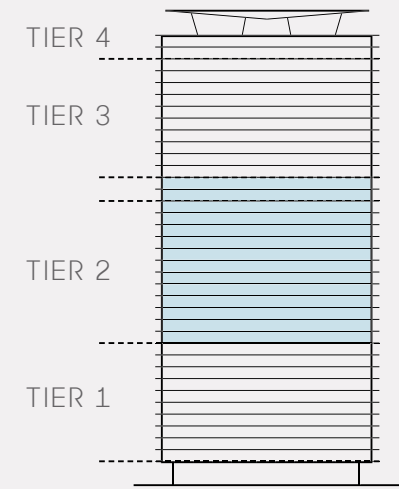
Unit 03 | Levels 23

Unit 08 | Levels 11-22

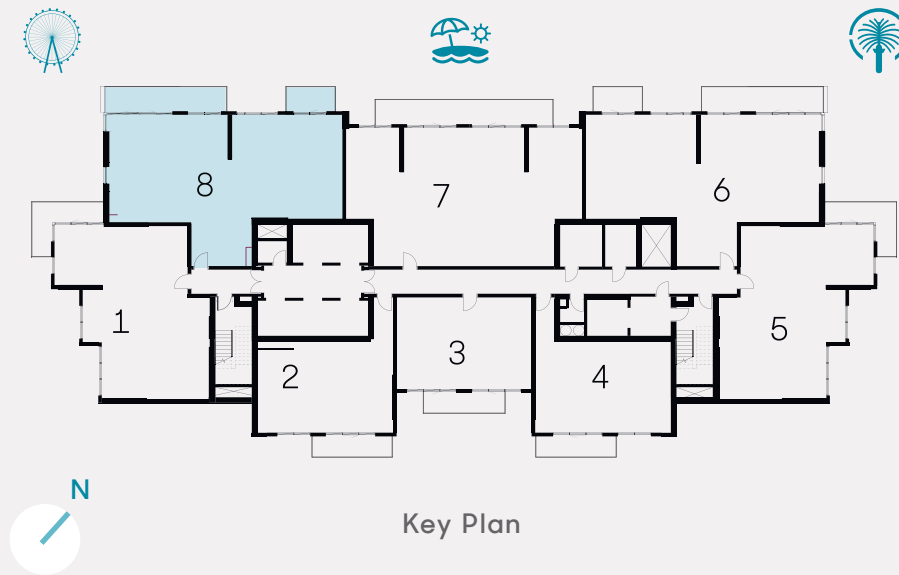
Suite Area 1686 sqft 156.62 sqm

Balcony Area 273 sqft 25.40 sqm

Total Area 1959 sqft 182.02 sqm



Key Section



Key Plan



3 BEDROOM - TYPE 01 B

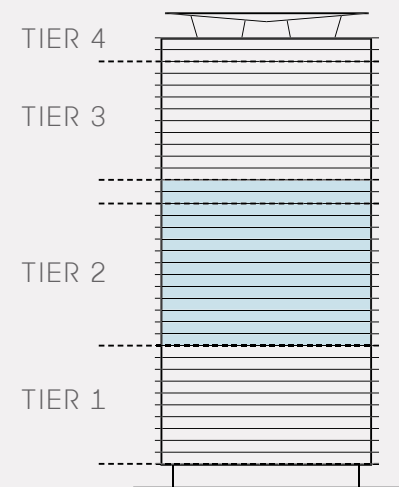
Unit 01 | Levels 23

Unit 06 | Levels 11 to 22

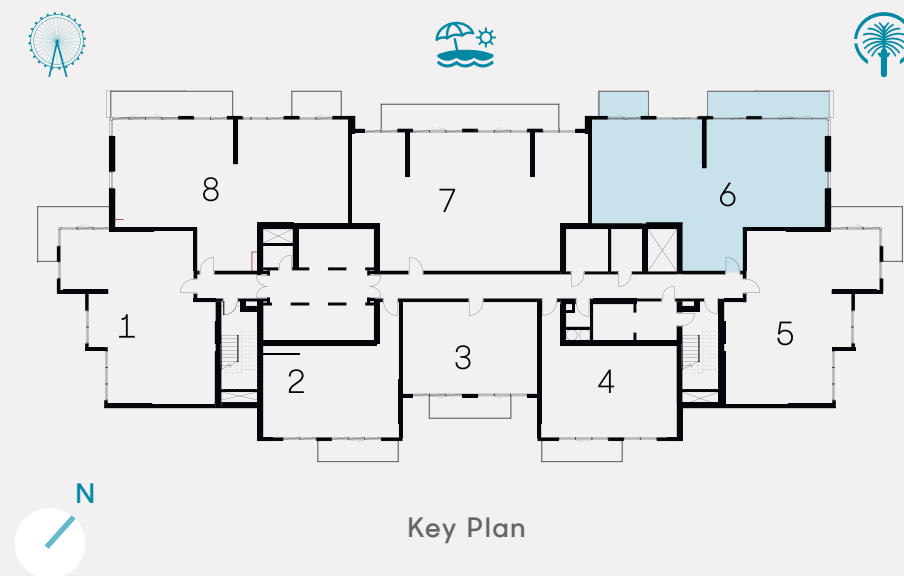
Suite Area 1691 sqft 157.06 sqm

Balcony Area 273 sqft 25.40 sqm

Total Area 1964 sqft 182.46 sqm



Key Section



Key Plan



3 BEDROOM - TYPE 02

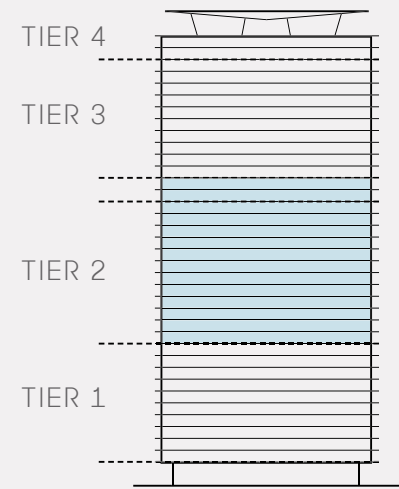
Unit 02 | Levels 23

Unit 07 | Levels 11 & 22

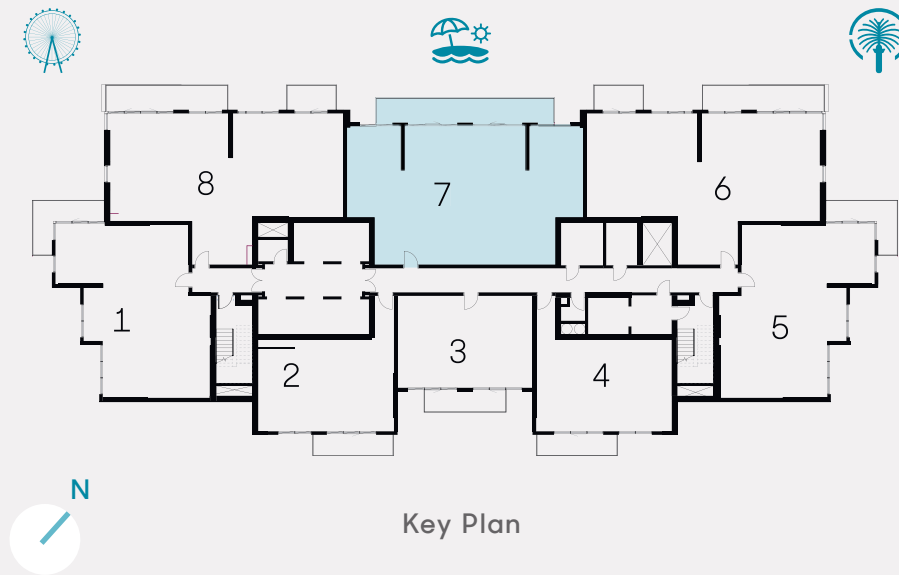
Suite Area 1784 sqft 165.74 sqm

Balcony Area 284 sqft 26.34 sqm

Total Area 2068 sqft 192.08 sqm



Key Section



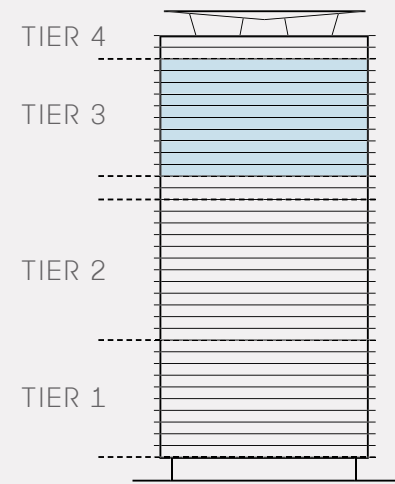
Key Plan



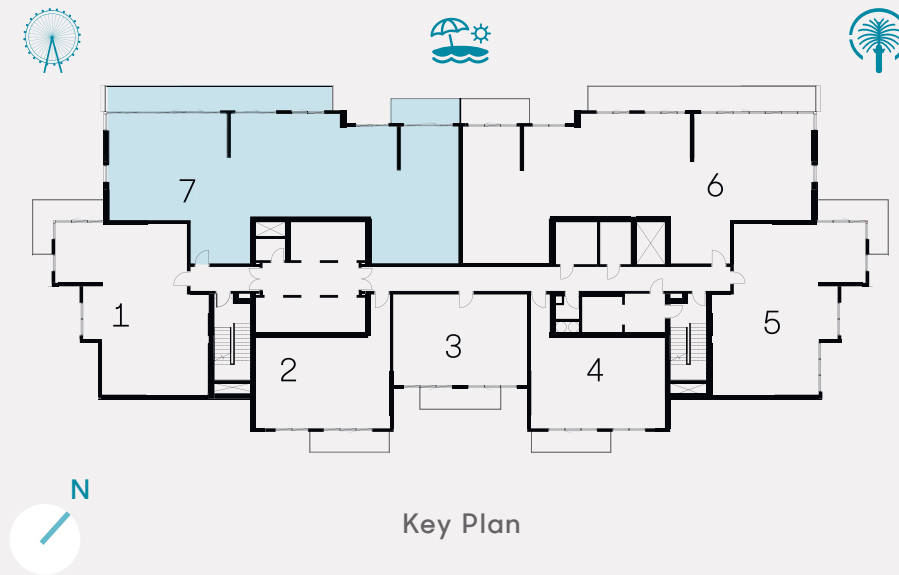
4 BEDROOM - TYPE 01 A

Unit 07 | Levels 25 to 34

Suite Area	2572 sqft	238.92 sqm
Balcony Area	479 sqft	44.48 sqm
Total Area	3050 sqft	283.40 sqm



Key Section



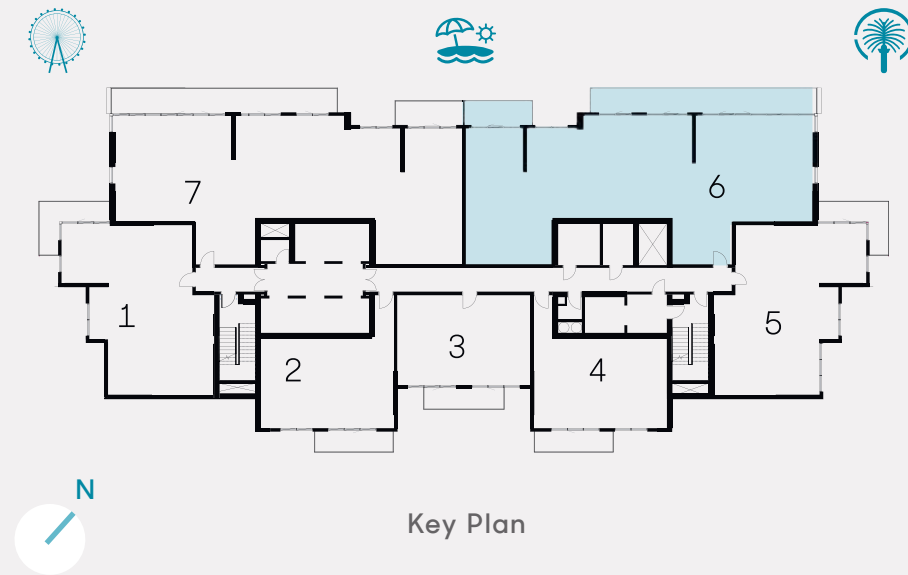
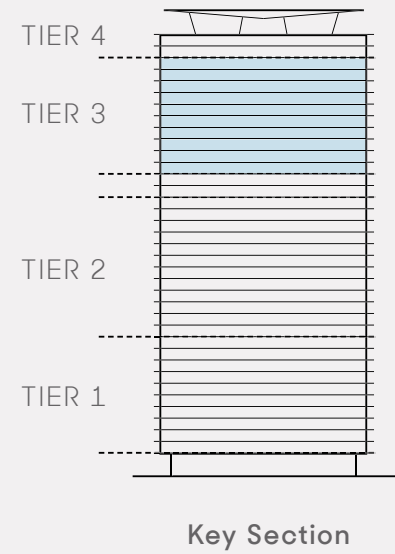
Key Plan



4 BEDROOM – TYPE 01 B

Unit 06 | Levels 25 to 34

Suite Area	2572 sqft	238.92 sqm
Balcony Area	479 sqft	44.48 sqm
Total Area	3050 sqft	283.40 sqm



DISCLAIMER: PLANS, DETAILS AND UNIT ORIENTATION INCLUDED ARE INDICATIVE ONLY AND ARE SUBJECT TO CHANGE BY THE DEVELOPER/SELLER AT ITS SOLE DISCRETION WITHOUT NOTICE AND/OR LIABILITY. ALL IMAGES, INCLUDING FEATURES, FINISHES, FURNISHINGS, VIEW AND SCALE ARE ILLUSTRATIVE ONLY. FINAL AREAS, ORIENTATION, DIMENSIONS, LAYOUT AND MATERIALS MAY DIFFER FROM THOSE STATED.

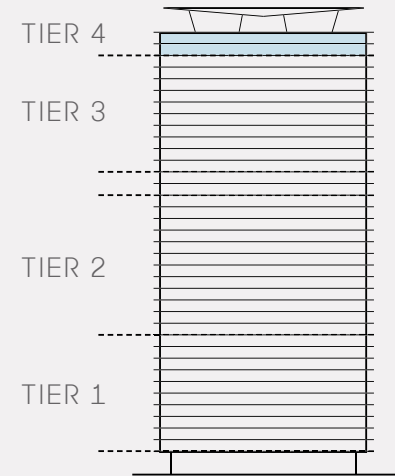
PENTHOUSE A

Unit 02 | Levels 35 to 36

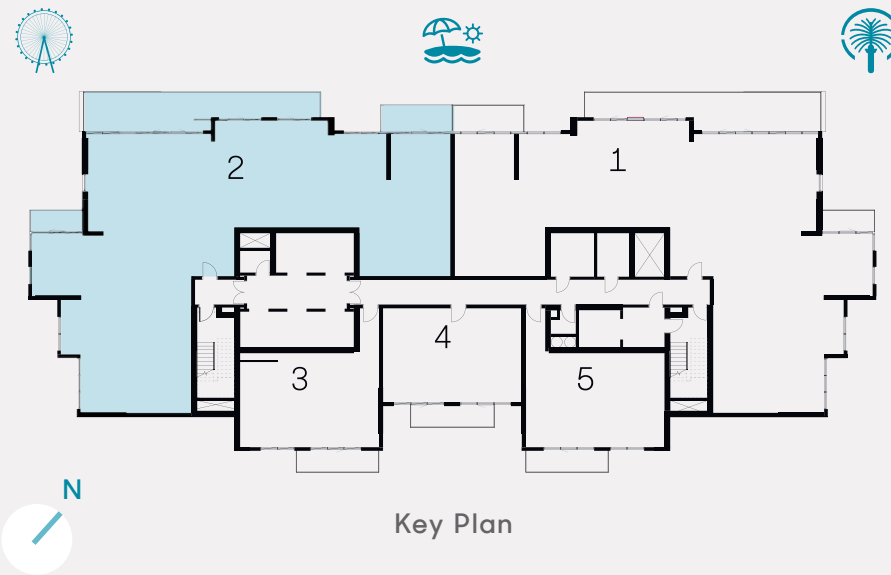
Suite Area 3809 sqft 353.88 sqm

Balcony Area 644 sqft 59.80 sqm

Total Area 4453 sqft 413.68 sqm



Key Section



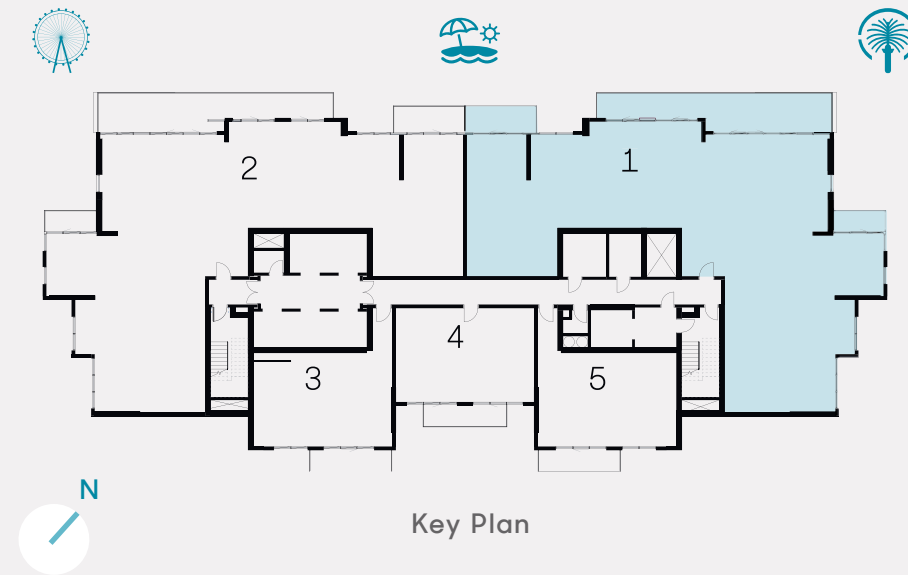
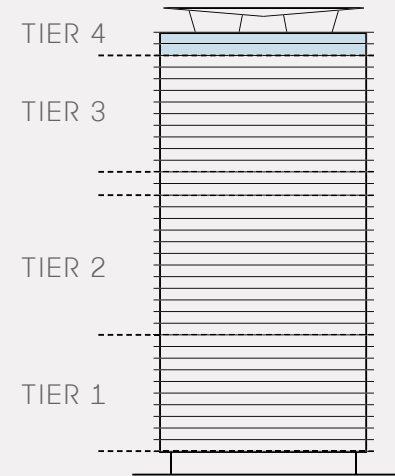
Key Plan



PENTHOUSE B

Unit 01 | Levels 35 to 36

Suite Area	3809 sqft	353.88 sqm
Balcony Area	644 sqft	59.80 sqm
Total Area	4453 sqft	413.68 sqm



DISCLAIMER: PLANS, DETAILS AND UNIT ORIENTATION INCLUDED ARE INDICATIVE ONLY AND ARE SUBJECT TO CHANGE BY THE DEVELOPER/SELLER AT ITS SOLE DISCRETION WITHOUT NOTICE AND/OR LIABILITY. ALL IMAGES, INCLUDING FEATURES, FINISHES, FURNISHINGS, VIEW AND SCALE ARE ILLUSTRATIVE ONLY. FINAL AREAS, ORIENTATION, DIMENSIONS, LAYOUT AND MATERIALS MAY DIFFER FROM THOSE STATED.

LaVIE

Live by the *beach*

BY **DUBAI** PROPERTIES
800DPUAE | DP.AE