

# THE SLOANE

*by* BELGRAVIA HEIGHTS

CALM, DESIGN-INSPIRED LIVING





## DUBAI, A MULTI-CULTURAL INVESTMENT HOTSPOT

Known for its cosmopolitan buzz and home to the tallest building in the world, Dubai is the pulsing heart of a nation brimming with hope, prosperity, and technological innovation. With beach-side resorts and amenities, Dubai is a coastal city that provides relaxing summers and cool winters, all within the heart of a fast-paced city. Infused with the cultures and colors of more than 200 nationalities, they live and work in productive harmony. Dubai is a role model in its commitment to the happiness and wellbeing of its people.

With its focus on human development, Dubai has become the ideal place for family living. It is home to a wide range of internationally accredited schools and universities, with communities developed to accommodate to the needs of growing families.

Offering tax-free investment, with high ROI rates in comparison to more mature cities around the world, Dubai is at the forefront of property investments. With its lifestyle offerings, the city is on the rise, and an investment in Dubai is unquestionably an investment in a promising future.



## DUBAI'S LEADING BOUTIQUE DEVELOPER

At Ellington Properties, we believe in making an impact on the way we interact with design. We create environments that encourage extraordinary lifestyles by designing spaces that challenge the norm, and support people as they journey towards their dreams and aspirations.

Ellington's properties are an intelligent mix of beautiful architecture and elegant construction. Renowned for creative designs and impeccable attention to detail, each Ellington residence reflects the sophisticated taste of its owners, delivering an unmatched premium experience.

We introduce an unrivaled standard of living by working with the world's greatest architects, developers, interior designers, and artists.

Ellington. Homes that inspire.



# SETTING NEW STANDARDS ACROSS DUBAI



Ellington Properties with its uncompromising commitment towards crafting living spaces that not only shape but redefine Dubai's real estate landscape has brought to life premium homes conceptualized for individuals that do not settle for anything less than exceptional.

## DOWNTOWN DUBAI



DT1 is a trend-setter for the new market standard that incorporates art, technology, and amenities in the heart of Dubai. Places emphasis on the expression of unique and luxurious residences wrapped with an understated yet elegant facade, offering a truly distinct setting inside out. It includes 132 units and penthouses, ranging from 534 sq ft to 5642 sq ft. With amenities including a lap and leisure pool, club lounge, gym, art gallery and landscaped areas and retail, DT1 offers the most impressive lifestyle.

## JUMEIRAH VILLAGE CIRCLE

### BELGRAVIA

Belgravia is a building enveloped by new 'Residential Rhythm' using precisely balanced proportions, bespoke details and sustainable material composition in the building design. The project includes 181 units, ranging from 1 to 3 bedroom apartments. Equipped with a swimming pool, gym, jogging track, elegant lobby, and indoor and outdoor playing areas, Belgravia provides well equipped amenities for all residents.

### BELGRAVIA III

Belgravia III comes with fresh cool palette with penny round tiles, white joinery and light wood accents creating an enjoyable and relaxing retreat. As a uniquely designed community, it offers 260 modern studios, 1 and 2 bedroom apartments and townhouses, with excellent amenities such as swimming pools, gyms, indoor and outdoor playing areas and landscaped greenery.



Designed to cater to the needs of families looking for a practical living option without compromising the space nor the design, Eaton Place offers a collection of 110 units including studios, 1, 2 & 3 bedroom residences. The project offers on-site opportunities for fitness and recreation, such as the well-equipped gym, the outdoor pool surrounded by lush greenery, play areas and more.

### SOMERSET MEWS

Somerset Mews features refined and contemporary townhouses with a striking facade of earth tones boasting ample private balconies and focuses on plenty of natural lights. The clean lines, expansive windows and open-concept layout of the townhouses reimagines how residents should live by using angles mixed with curved surfaces, floor-to-ceiling picture windows and innovative designs. Explore 17 spacious 4 bedroom townhouses, designed in true contemporary fashion.

## MOHAMMED BIN RASHID CITY

### W I L T O N — TERRACES —

Wilton Terraces creates an atmosphere where young families can connect, share and grow. Influenced by the rich textures and patterns prominent from the Silk Road period, the twin 12-storeyed towers comprise of 283 bespoke 1 and 2 bedroom residences. The project includes a fitness centre, pool, kids play area, barbeque areas and retail and entertainment venues.

### BELGRAVIA II

Belgravia II offers its residents a quality of life that can't be found elsewhere with a color scheme that is intentionally neutral, a calm but strong range of white and warm woods offset and framed by black, appreciating the shadows of time. Alongside the 188 units consisting of studios, 1, 2 and 3 bedroom apartments and townhouses, the project offers amenities designed to enhance the residents' living experience, such as the pool, gym, indoor playing area and landscaped central court.

### BELGRAVIA HEIGHTS I

With a Scandinavian design approach, timeless gray palette and beautiful accents of white and warm beige tones, the look and feel invites minimalism, simplicity and functionality, creating a more holistic approach in life. It features 156 bespoke studios, 1 and 2 bedroom apartments, a resort-style pool, pool terrace, roof deck, yoga retreat, children's play area and fully equipped fitness centre.

### BELGRAVIA *Square*

An icon of contemporary architecture and designed for optimum community living, Belgravia Square encompasses 225 beautifully crafted studios, 1 & 2 bedroom apartments, with amenities such as adult and kids pool areas, well-equipped fitness center, changing rooms, a kid play area, and a clubhouse.

### WILTON PARK RESIDENCES

The project is designed to allow its residents to experience a balanced indoor and outdoor lifestyle where the apartments and residences flow uninterrupted into the outdoor spaces, seamlessly extending the interiors. Featuring 320 studio, 1 & 2 bedroom apartments, with lobbies designed for seating and working, well-equipped fitness centre, indoor and outdoor yoga retreats, garden areas for seating and lounging, barbeque areas, clubhouse and swimming pool.

# AWARDS

## 2016 - 2017 ARABIAN PROPERTY AWARDS

Best Residential High-Rise Architecture – DT1  
Best Architecture Single Residence – The Ellington Collection at The Palm Island

## 2018 - 2019 ARABIAN BUSINESS AWARDS

Innovative Company of the Year  
Best Luxury Project – DT1

## 2018 - 2019 INTERNATIONAL PROPERTY AWARDS

Best Interior Design Show Home – Belgravia Heights 1  
Best Bathroom Design – DT1  
Best Regional Residential Property – Emirates Hills 181  
Best Global Residential Property – Emirates Hills 181  
Best Office Interior – Ellington Office

## 2019 - 2020 CUSTOMER HAPPINESS SUMMIT & AWARDS

Customer Happiness Award – Real Estate Developer of The Year  
Best Boutique Property Development Company Middle East – Build Magazine  
Award for Excellence in Design-Led Solutions 2019 – Build Magazine

## 2020 - 2021 INTERNATIONAL PROPERTY AWARDS

Best Residential Development – Wilton Park Residences  
Best Bathroom Design – Master Bathroom in Wilton Park Residences  
Award-winner in Development Marketing – Live In Design Campaign  
Award-winner for Residential Interior – Apartment – Eaton Place  
Award-winner for Residential Interior – Show Home – Belgravia Square



DELIVERED PROJECT: 2017

📍 Jumeirah Village Circle

## BELGRAVIA

Ellington's first iconic building



DELIVERED PROJECT: 2018

📍 Jumeirah Village Circle

## BELGRAVIA II

A quality of life that's unsurpassed

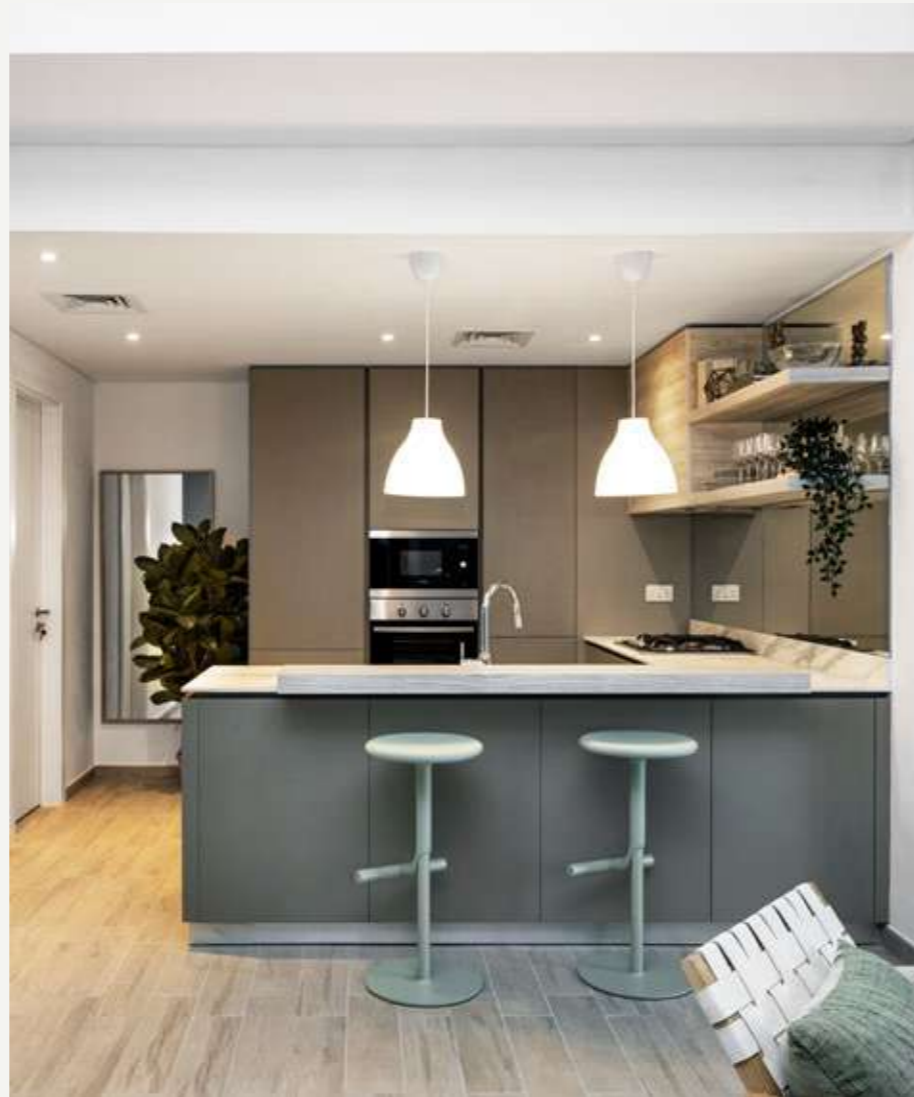


DELIVERED PROJECT: 2019

📍 Jumeirah Village Circle

EATON PLACE

A place for the family



## DELIVERED PROJECT: 2021

📍 Downtown Dubai



Elevating the art of living well



# THE SLOANE

by BELGRAVIA HEIGHTS

Located in Jumeirah Village Circle, a diverse community in the heart of Dubai



**10 Minutes**

Dubai Autodrome



**10 Minutes**

Mall of the Emirates



**10 Minutes**

Dubai Marina



**15 Minutes**

Downtown Dubai  
& Burj Khalifa



**15 Minutes**

Burj Al Arab



**18 Minutes**

Palm Jumeirah



**20 Minutes**

Jumeirah Beach



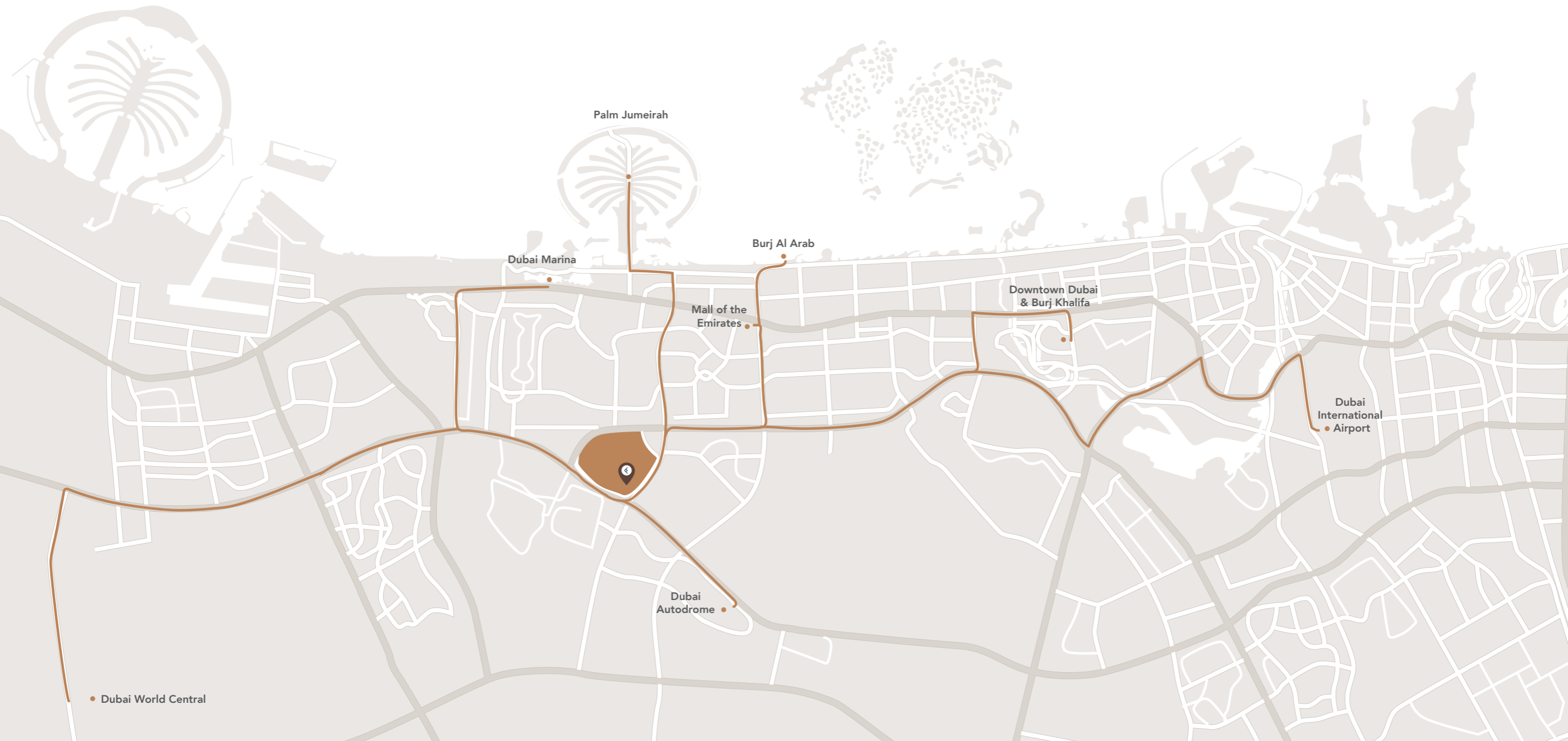
**28 Minutes**

Dubai World Central



**30 Minutes**

Dubai International Airport



• Dubai World Central

A RETREAT IN THE HEART OF THE CITY

## JUMEIRAH VILLAGE CIRCLE



Jumeirah Village Circle is an investment hotspot. With high ROI rates, it is home to all sorts of lifestyles, with houses ranging from Mediterranean villas to luxurious modern apartments.

Ellington's properties in Jumeirah Village Circle include world-class amenities and top-level interior finishes, exclusively targeted to attract like-minded homeowners who expect nothing less from their standard of living.



# THE SLOANE

by BELGRAVIA HEIGTHS



WELCOME TO

# THE SLOANE

by BELGRAVIA HEIGHTS

The Sloane offers refuge in a serene and tranquil environment. As a relaxed, easy vibe, coastal design, it incorporates natural elements, providing you with spaces to help you unwind.

The Sloane is Ellington's newest high-rise development, the epitome of understated beauty, with an interior that mixes beach-side luxury with laid-back comfort.





THE SLOANE  
↳ BELGRAVIA HEIGHTS



THE SLOANE  
↳ BELGRAVIA HEIGHTS

CAFE

## BOLD, TRANQUIL & SERENE DESIGN

---

Elegant crisp white Miami inspired tower, with a slick, contemporary façade, contrasting whites with timbers.

Highlighted by rich and textual dark travertine and punctuated by lobby windows that provide a peek into the art and experience that lies within.





LOBBY

## A DIVERSE AND WELCOMING SPACE

---

The lobby is a reminiscent of a beach escape. With its bold, textural and dramatic laid-back setting. It creates a calming oasis for residents and guests.

An area to socialize, work and entertain, the lobby features a full-hospitality venue, setting a tone for an unexpected escape within Jumeirah Village Circle.





SWIMMING POOL

## REFRESHING & RELAXING

---

The pool offers two different areas, a lap and lounge section, suitable for both beginners and experts alike. It is the perfect place to enjoy the weather, relax, swim and get inspired.





GYM

## STIMULATES & MOTIVATES

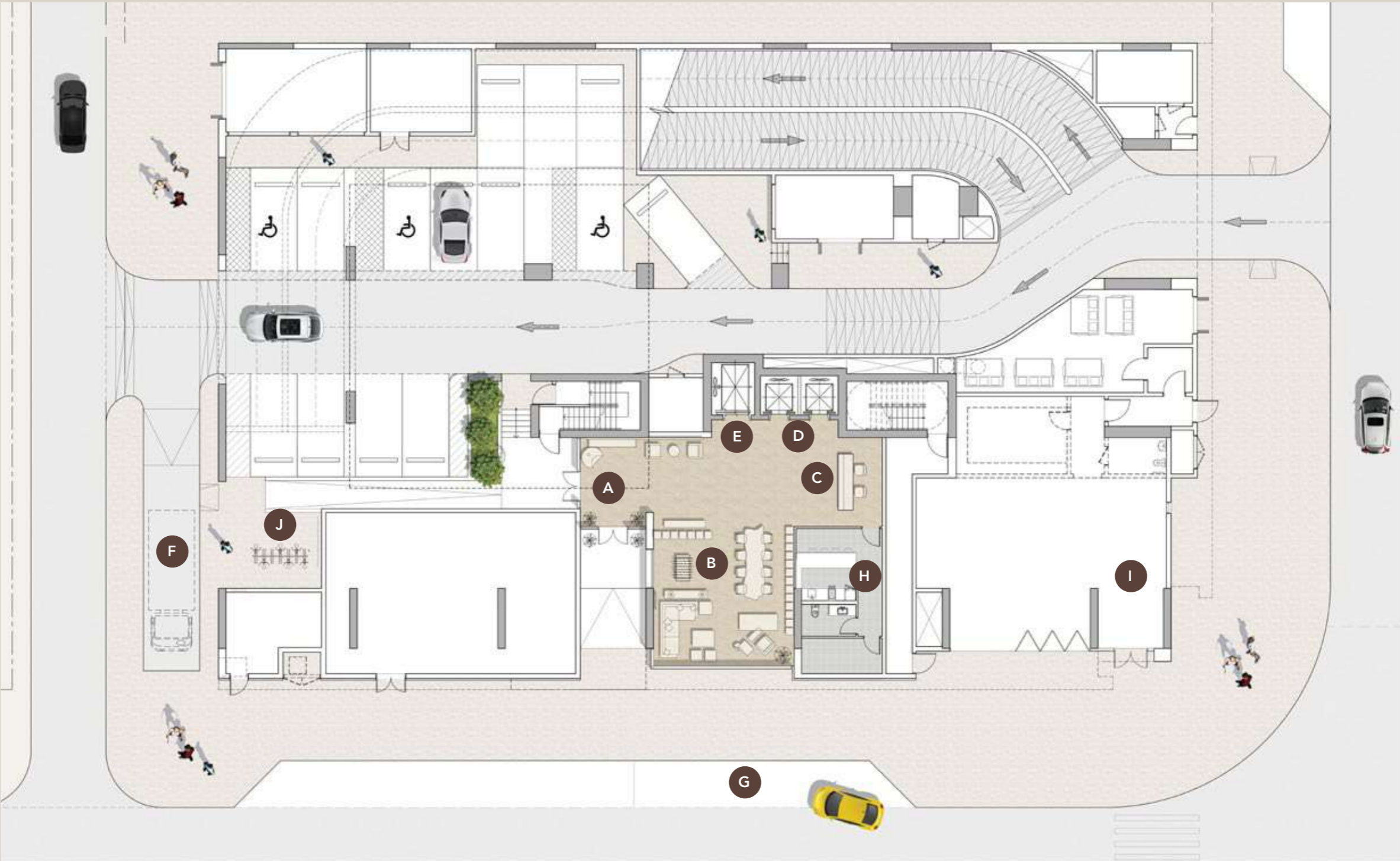
---

Designed with your whole body in mind, the gym is a vibrant and engaging space providing residents the best motivation to get moving. Featuring five workout zones for cardio, resistance, free weights, boxing and stretching, the fitness studio caters an ultimate routine to become your best self.



# GROUND FLOOR AMENITIES PLAN

- A** ENTRANCE LOBBY
- B** CLUBHOUSE LOUNGE
- C** RECEPTION
- D** LIFTS
- E** MOVE-IN LIFT
- F** MOVE-IN TRUCK PARKING
- G** DROP OFF AREA
- H** FACILITY MANAGEMENT OFFICE
- I** RETAIL OR F&B OUTLET
- J** BIKE PARKING



# 1<sup>ST</sup> FLOOR AMENITIES PLAN

- A** LEISURE LOUNGE POOL
- B** LAP POOL
- C** POOL SUN-LOUNGERS AREA
- D** BBQ / PICNIC AREA
- E** OUTDOOR GYM
- F** GYM
- G** ENTERTAINMENT ZONES FOR OUTDOOR CINEMA AND EVENTS
- H** CHANGING ROOM, STEAM SHOWER AND SAUNA
- I** LIFT LOBBY
- J** BATHROOM FOR PEOPLE OF DETERMINATION



# ROOF FLOOR AMENITIES PLAN

- A** LIFT LOBBY
- B** ACCESS WALKWAY TO PETS AREA
- C** PETS' PLAYGROUND
- D** PETS' WASHING SPACE



THE SLOANE  
by BELGRAVIA HEIGHTS



THE SLOANE  
by BELGRAVIA HEIGHTS

CAFE





## INTERIORS

---

Cozy and bright, The Sloane is a young and fresh take on vibrant urban living, with coastal palette that offers a neutral and comforting backdrop.

A welcoming mix of grand and bright white, neutral coffee tones and warm wood complimented by subtle hints of black, textural compositions and art.





KITCHEN

## SLEEK SPACES WHERE CULINARY MAGIC CAN UNFOLD

---

With the aim of creating spaces that inspire, the kitchen combines functionality with superb international quality standards. The signature kitchen island offers the perfect surface for kitchen creations and entertainment.

Ergonomically designed, the kitchen is fitted with integrated appliances that blend away with two-tone laminate cabinets and quartz waterfall countertops.





LIVING ROOM

## INVITING & INVIGORATING

---

Sophisticated and simple, the living spaces provide uninterrupted views and access to the outdoors. An open space where living, dining, and kitchen merge into a lifestyle destination.

A beautiful space to gather, providing endless reasons to celebrate. There is no doubt that the living spaces at The Sloane were made to impress.





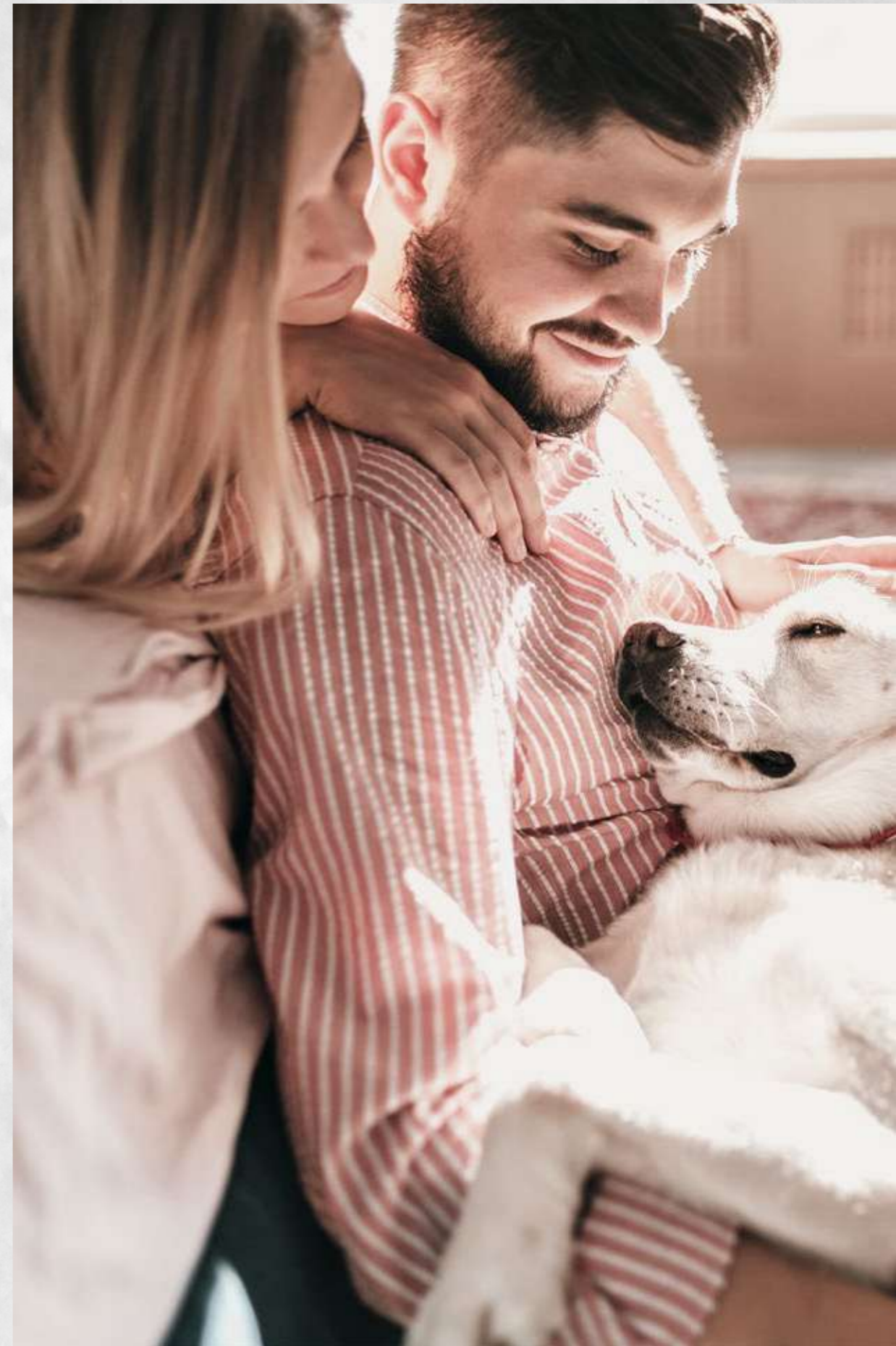
BEDROOM

## WARM, COZY & COMFORTING

---

Created to be a personal sanctuary, the bedrooms at The Sloane provide crisp white walls, large spacious balconies with views that help you relax and unwind.

With a heightened ceiling and bright finishing, the spacious bedrooms put your comfort first, in a beach-inspired experience.





BATHROOM

## A PLACE TO RECHARGE

---

Elegant and functional, the sleek bathroom provides ample storage and display spaces for modern day living routine.

The bold white woven wall tile accentuates the feature walls, while soft and warm porcelain lines the floors and a spa-like walk-in shower reinforces a sense of relaxation and well-being.





Project Registration No: 2064

The renderings and visualizations contained in this brochure are provided for illustrative and marketing purposes. While the information provided is believed to be accurate and reliable at the time of printing, only the information contained in the final Sales and Purchase Agreement will have any legal effect.



**ELLINGTON**  
P R O P E R T I E S

LIVE IN *DESIGN*



## CONTACT US

+971 4 248 3400 | +971 55 162 3236

### Email Us

info@tanamiproperties.ae

For More Info...

<https://www.tanamiproperties.com/Projects/The-Sloane>



## ADDRESS

Office 3405, Marina Plaza,  
Al Marsa Street, Dubai Marina, UAE