

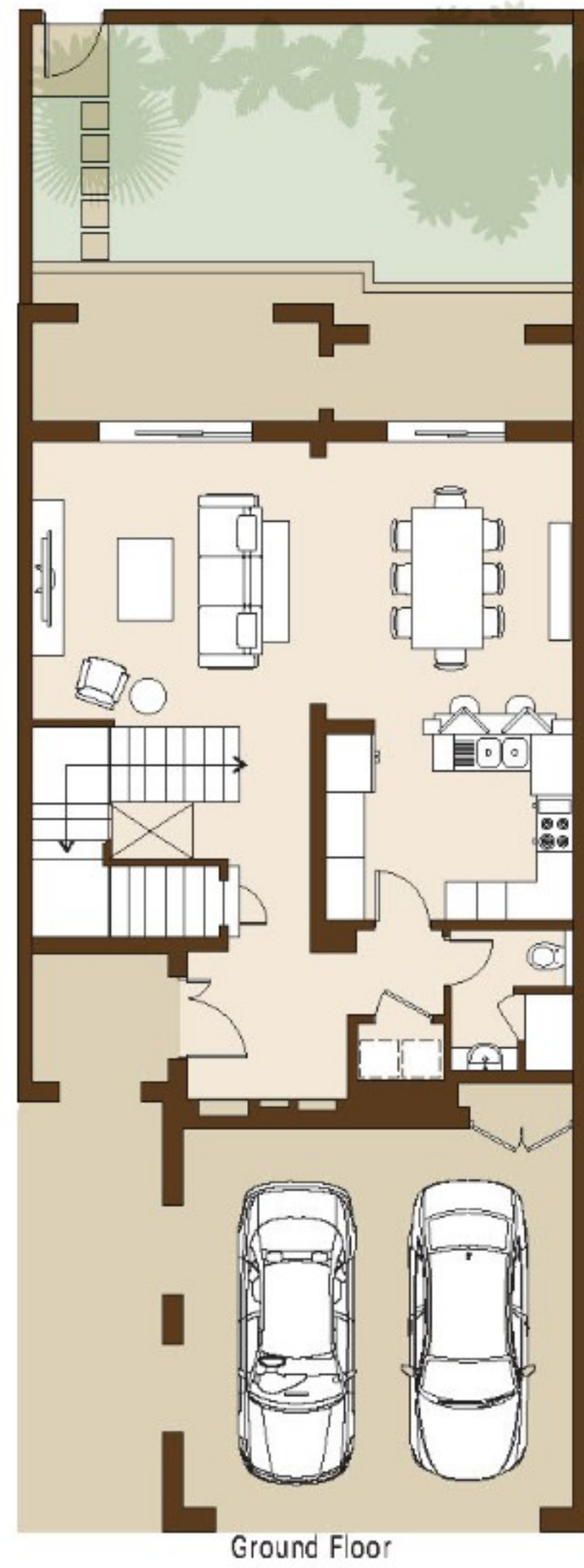


PAYMENT PLAN

INSTALLMENT	MILESTONE	PAYMENT
1	Upon Reservation	10%
2	Within 14 days of reservation	90%

2 Bedroom - 5B

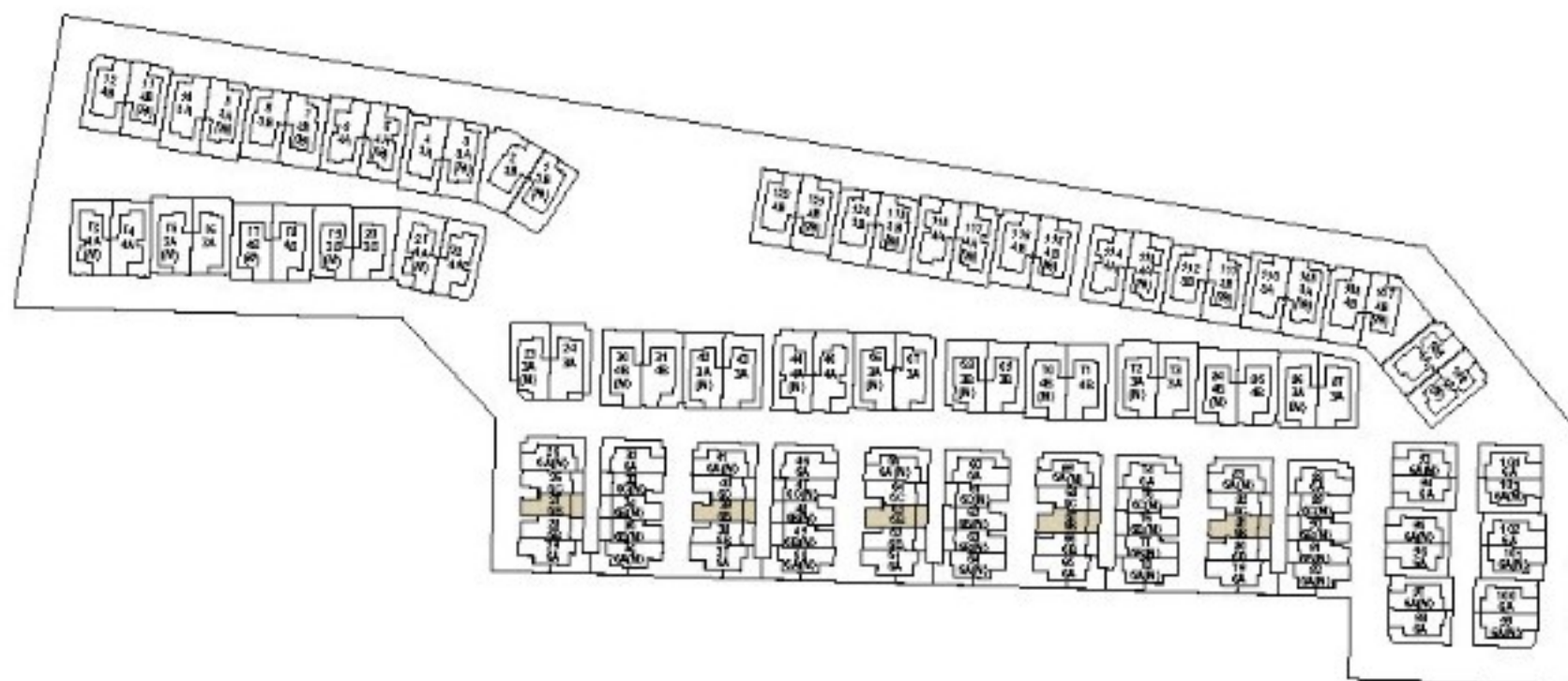
2 BEDROOM TOWNHOUSE
Villa Numbers 27, 39, 53, 67 & 81
Type 5B



Ground Floor



First Floor

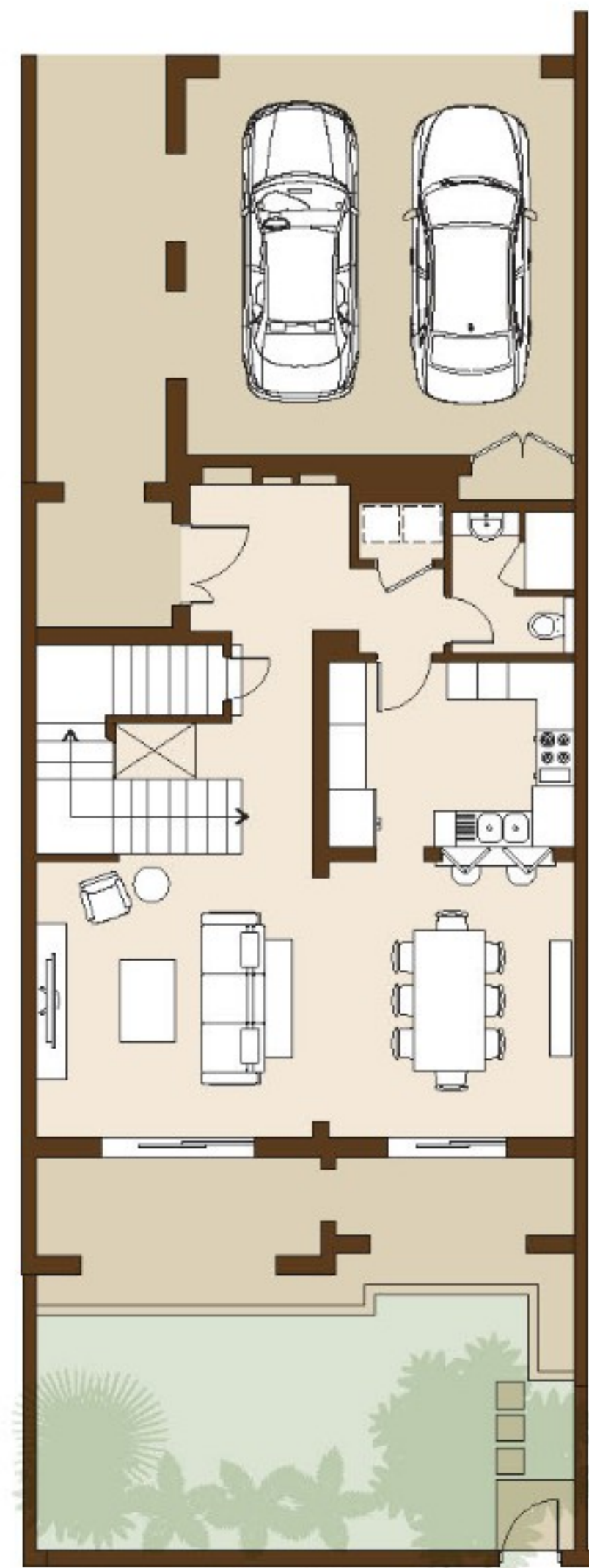


Built Up Area	262.08 m ²	2,821.01 ft ²
---------------	-----------------------	--------------------------

Drawings are provided by our consultants. All dimensions, features and amenities are approximate at time of printing. Actual size may vary from stated area. Drawings not to scale E & OE. The developer reserves the right to make revisions to the floor plans and any features, materials and dimensions mentioned without further notice.

2 Bedroom - 5B(M)

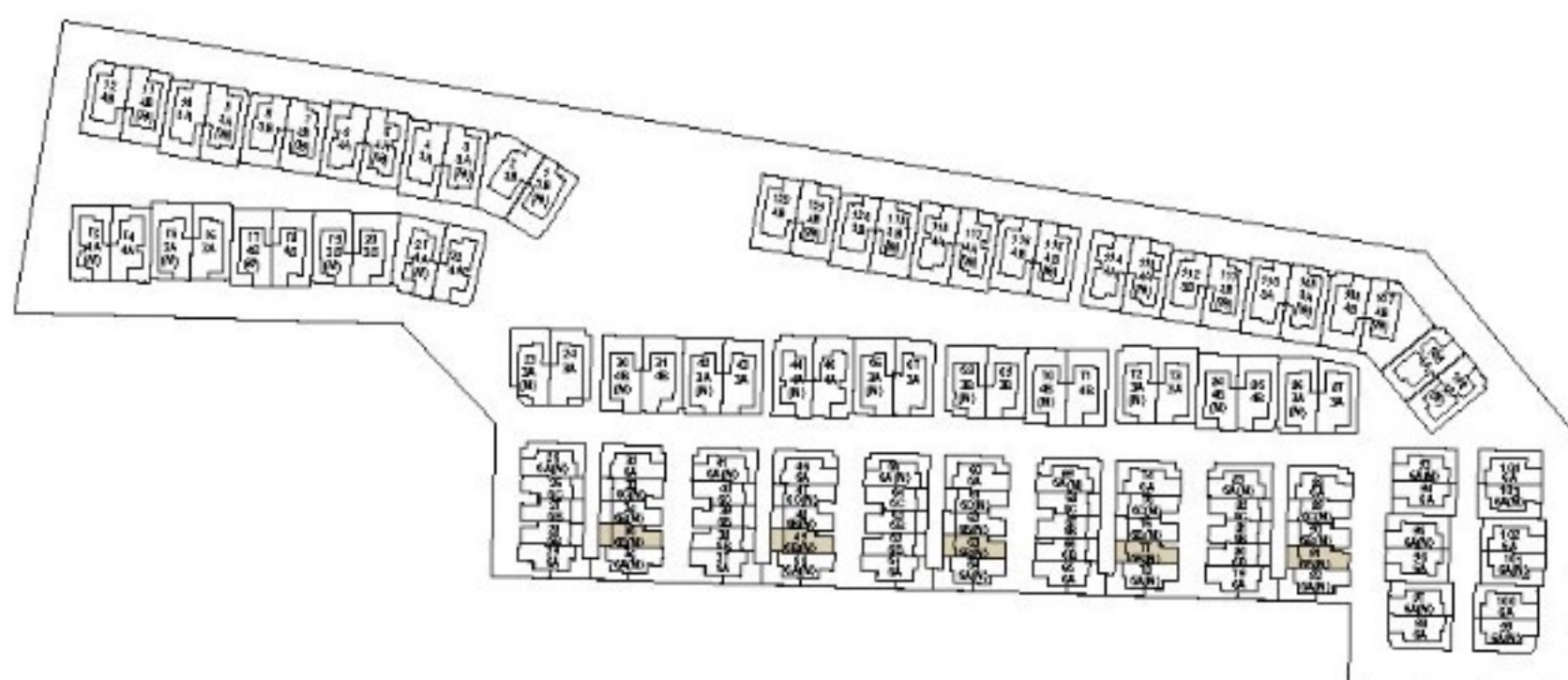
2 BEDROOM TOWNHOUSE
Villa Numbers 35, 49, 63, 77 & 91
Type 5B (M)



Ground Floor



First Floor

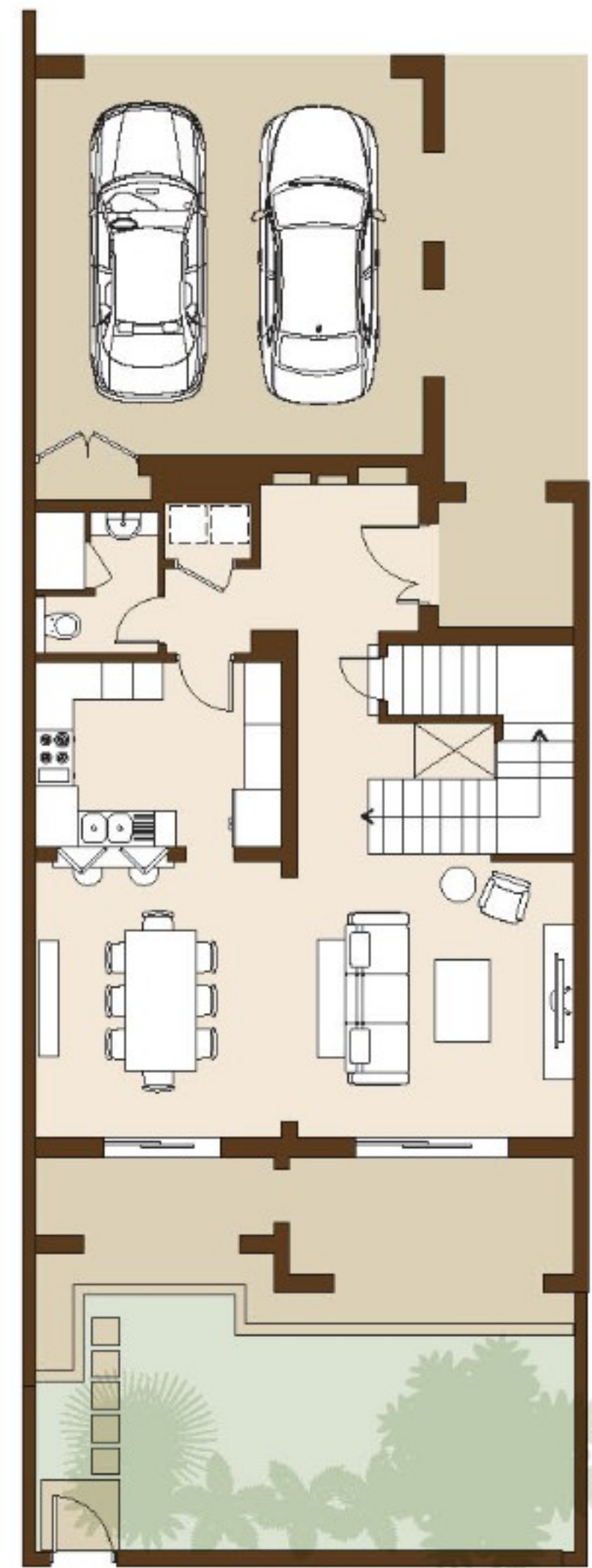


Built Up Area	260.33 m ²	2,802.17 ft ²
---------------	-----------------------	--------------------------

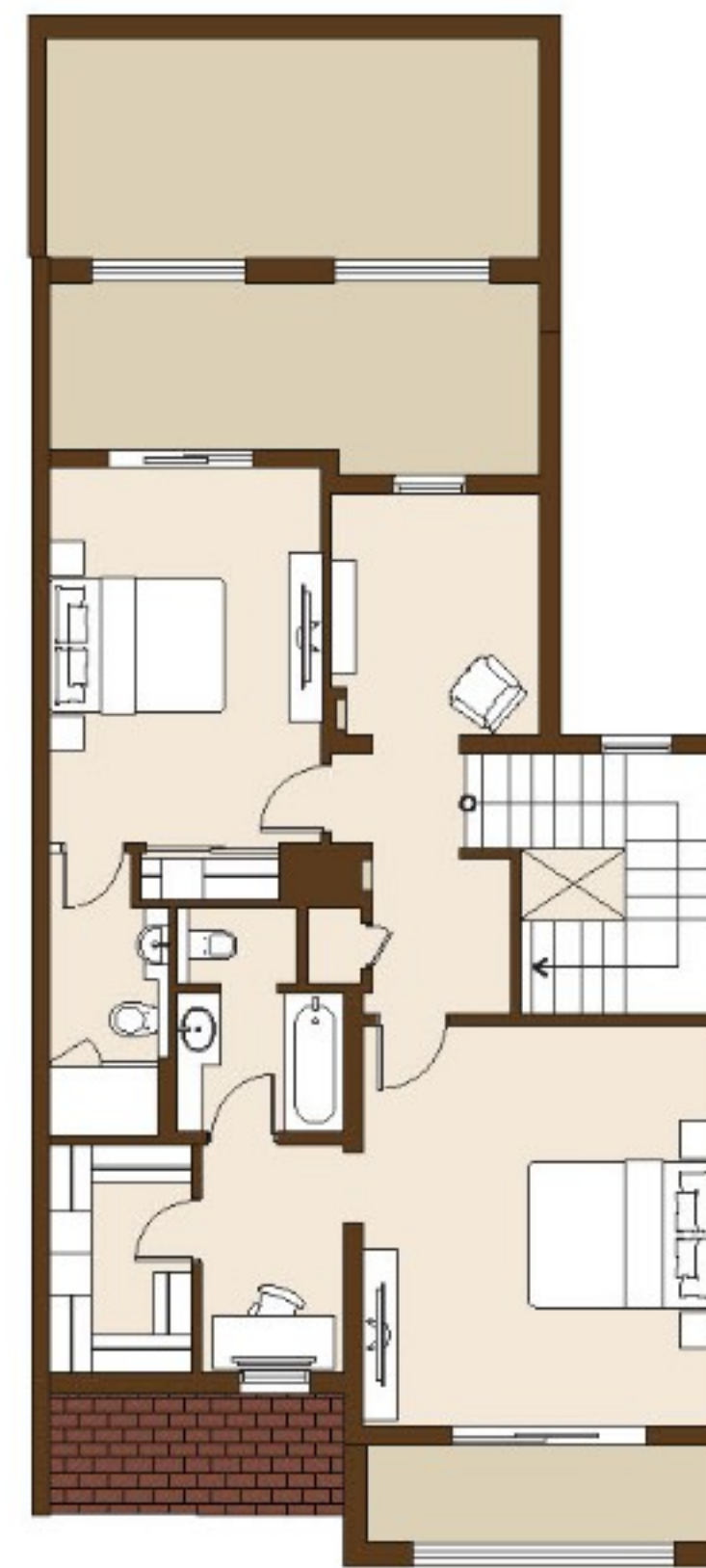
Drawings are provided by our consultants. All dimensions, features and amenities are approximate at time of printing. Actual size may vary from stated area. Drawings not to scale E & OE. The developer reserves the right to make revisions to the floor plans and any features, materials and dimensions mentioned without further notice.

2 Bedroom - 5C

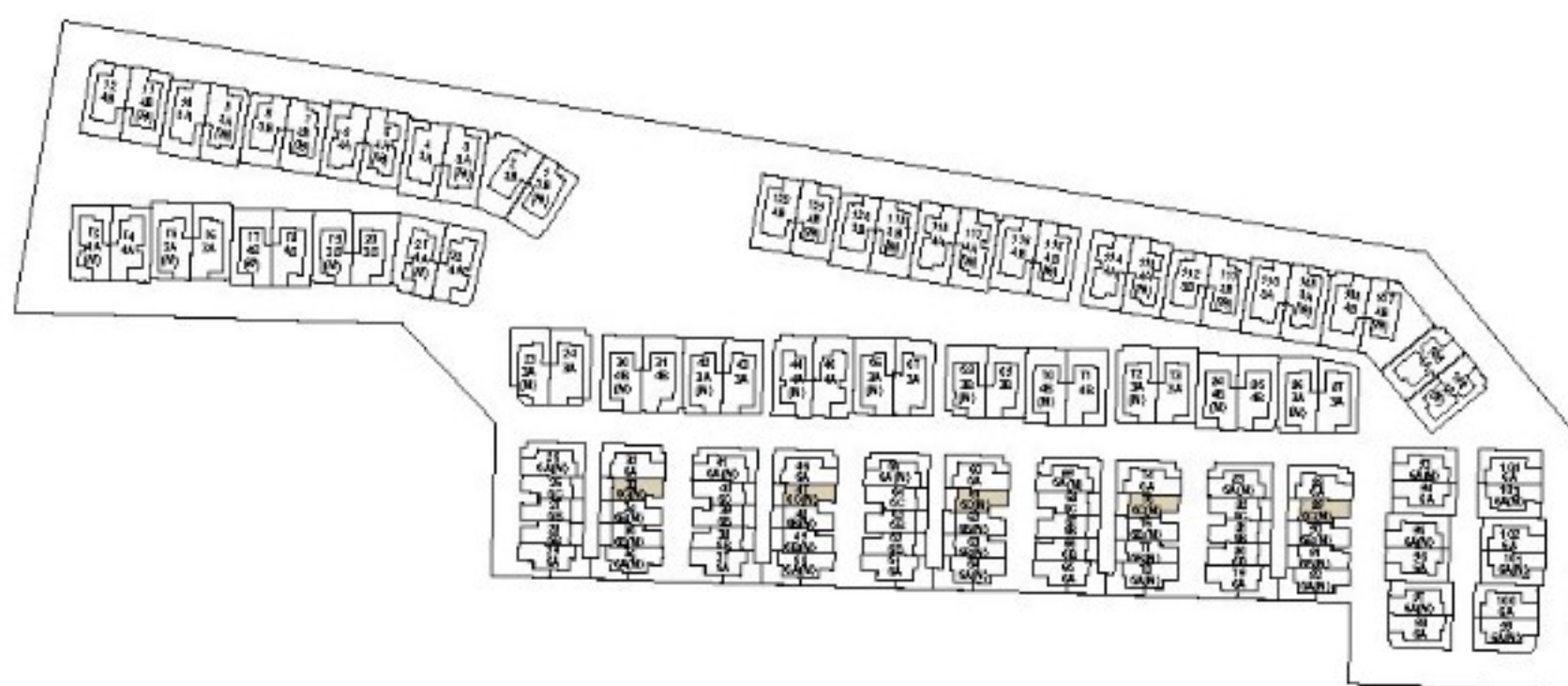
2 BEDROOM TOWNHOUSE
Villa Numbers 33, 47, 61, 75 & 89
Type 5C (M)



Ground Floor



First Floor



Built Up Area	262.76 m ²	2,828.33 ft ²
---------------	-----------------------	--------------------------

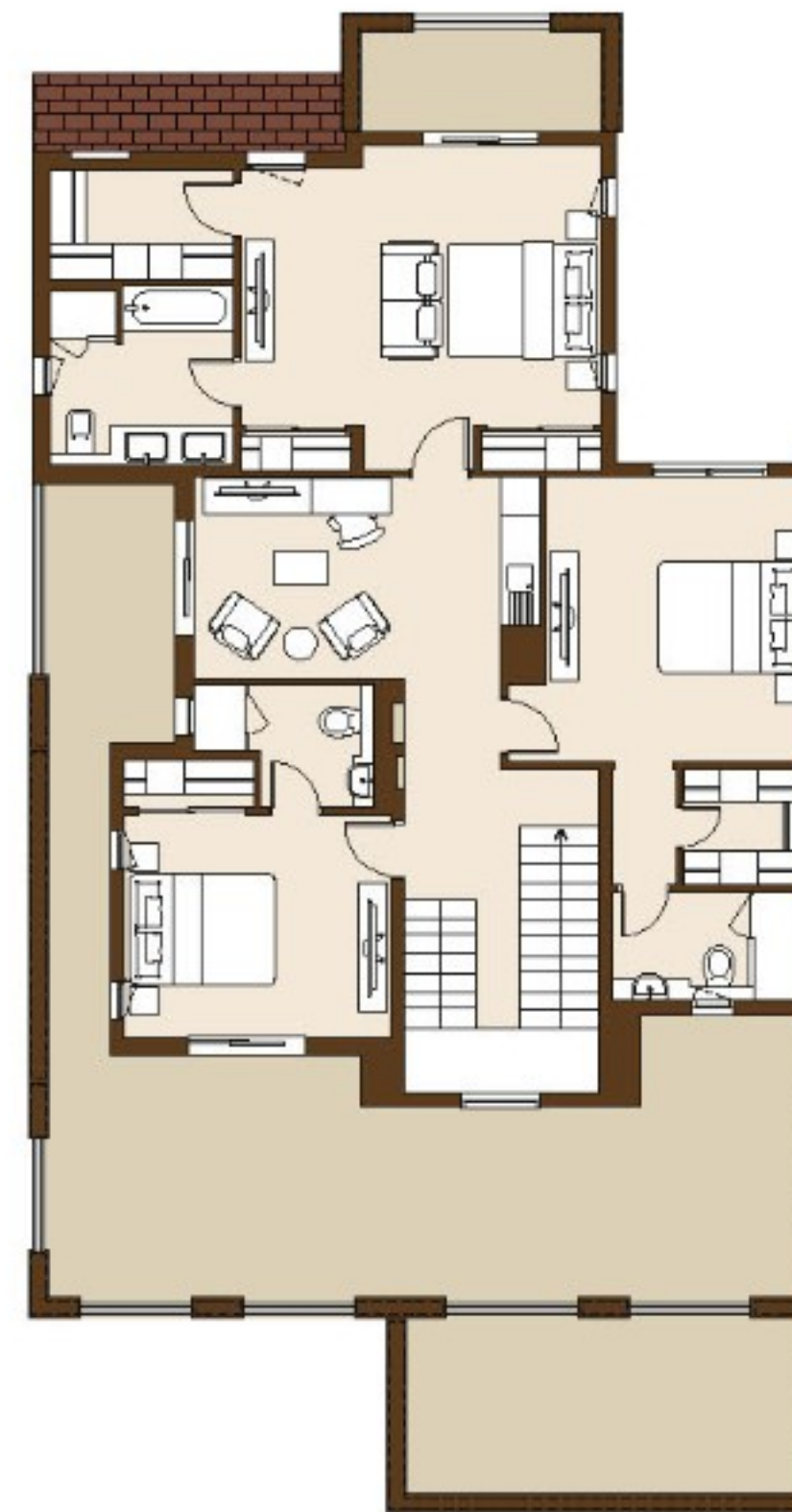
Drawings are provided by our consultants. All dimensions, features and amenities are approximate at time of printing. Actual size may vary from stated area. Drawings not to scale E & OE. The developer reserves the right to make revisions to the floor plans and any features, materials and dimensions mentioned without further notice.

3 Bedroom - 3A

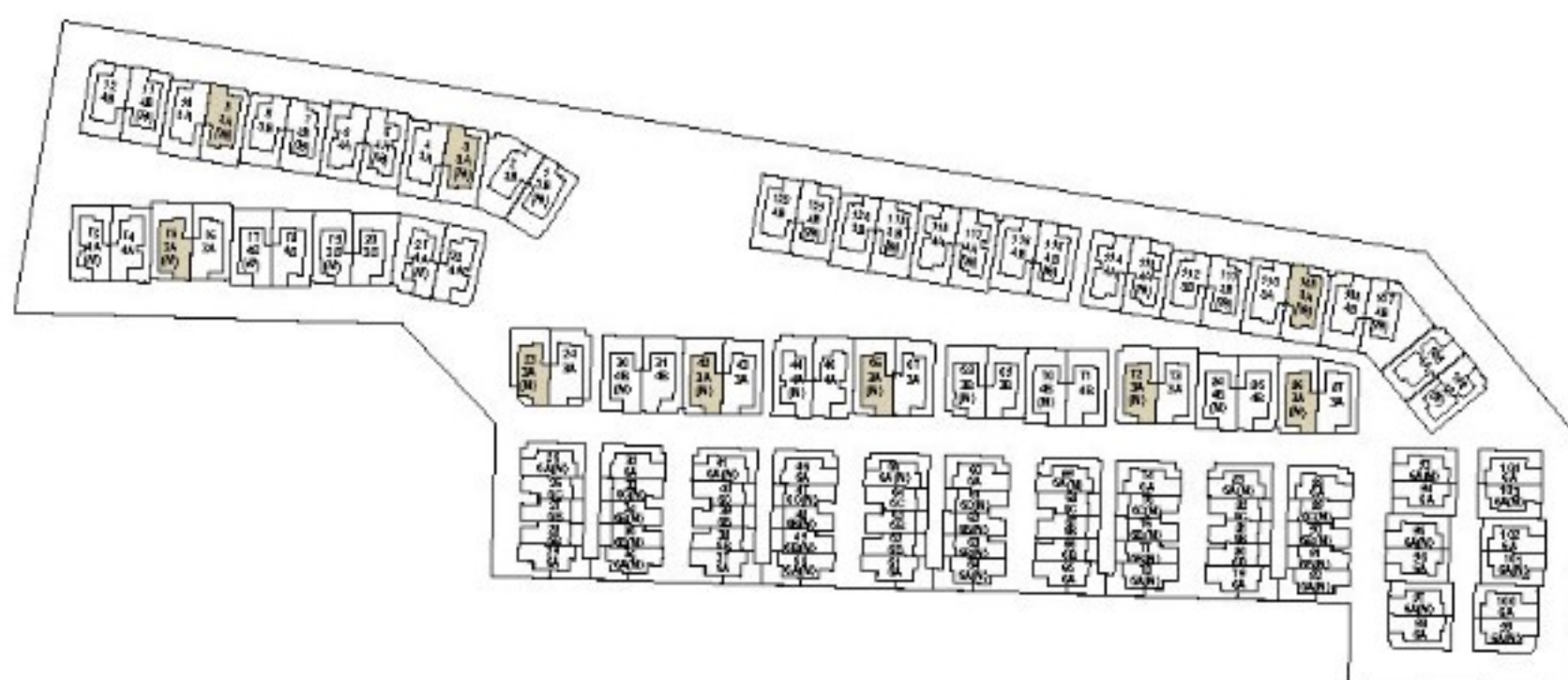
3 BEDROOM VILLA
Villa Numbers 3, 9, 15, 23, 42, 56, 72, 86 & 109
Type 3A (M)



Ground Floor



First Floor

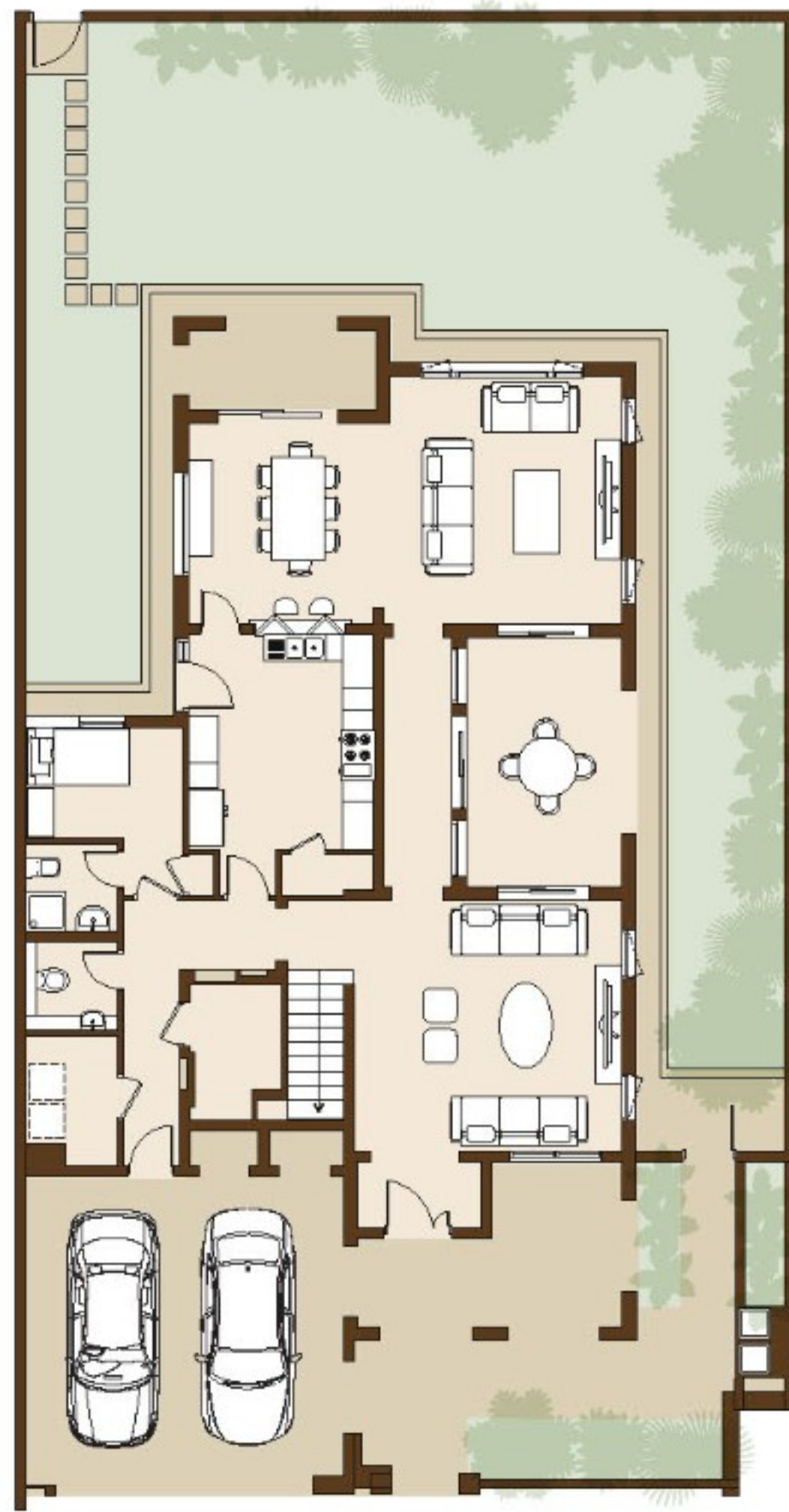


Built Up Area	441.19 m ²	4,748.93 ft ²
---------------	-----------------------	--------------------------

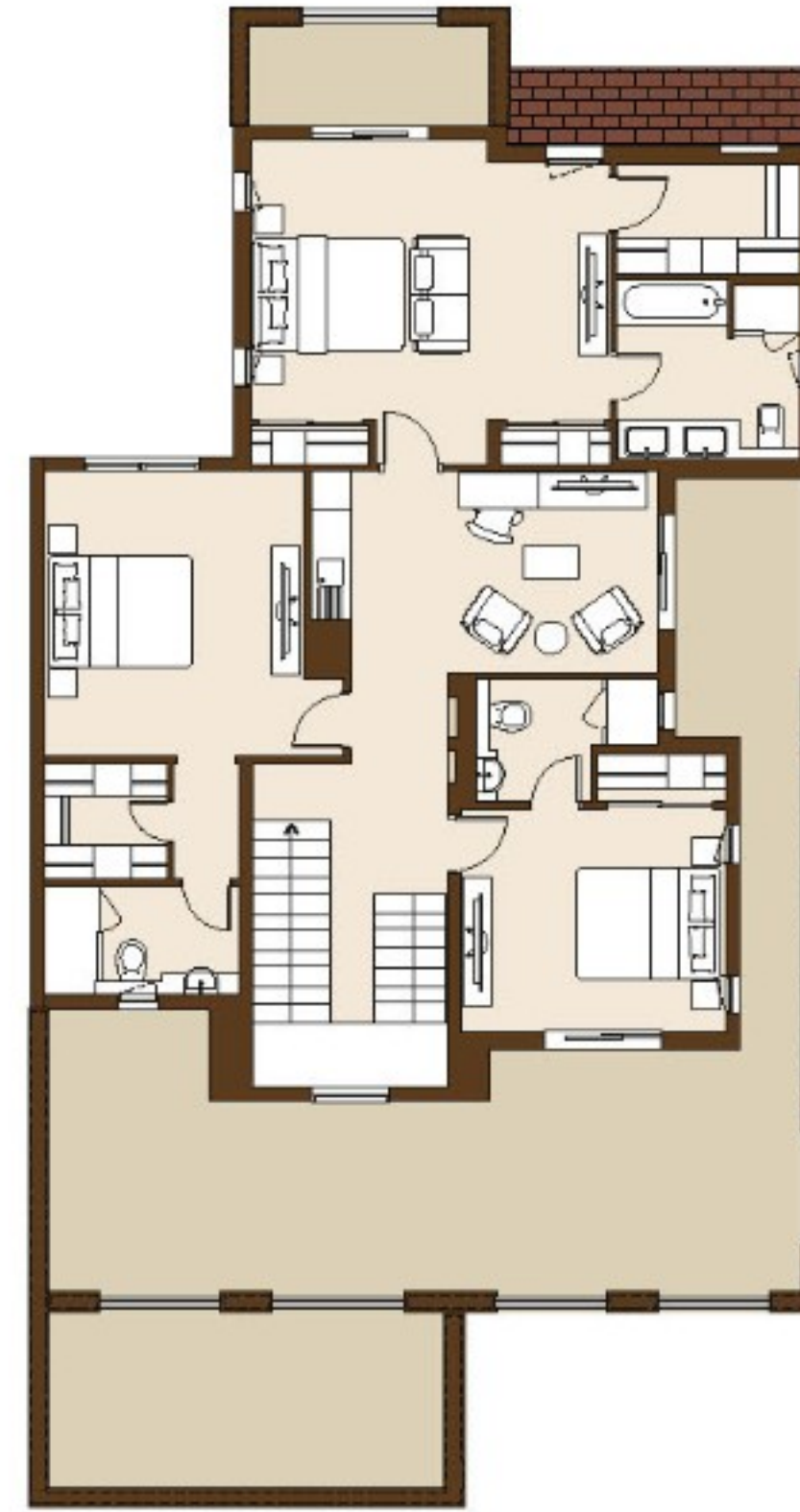
Drawings are provided by our consultants. All dimensions, features and amenities are approximate at time of printing. Actual size may vary from stated area. Drawings not to scale E & OE. The developer reserves the right to make revisions to the floor plans and any features, materials and dimensions mentioned without further notice.

3 Bedroom - 3A(M)

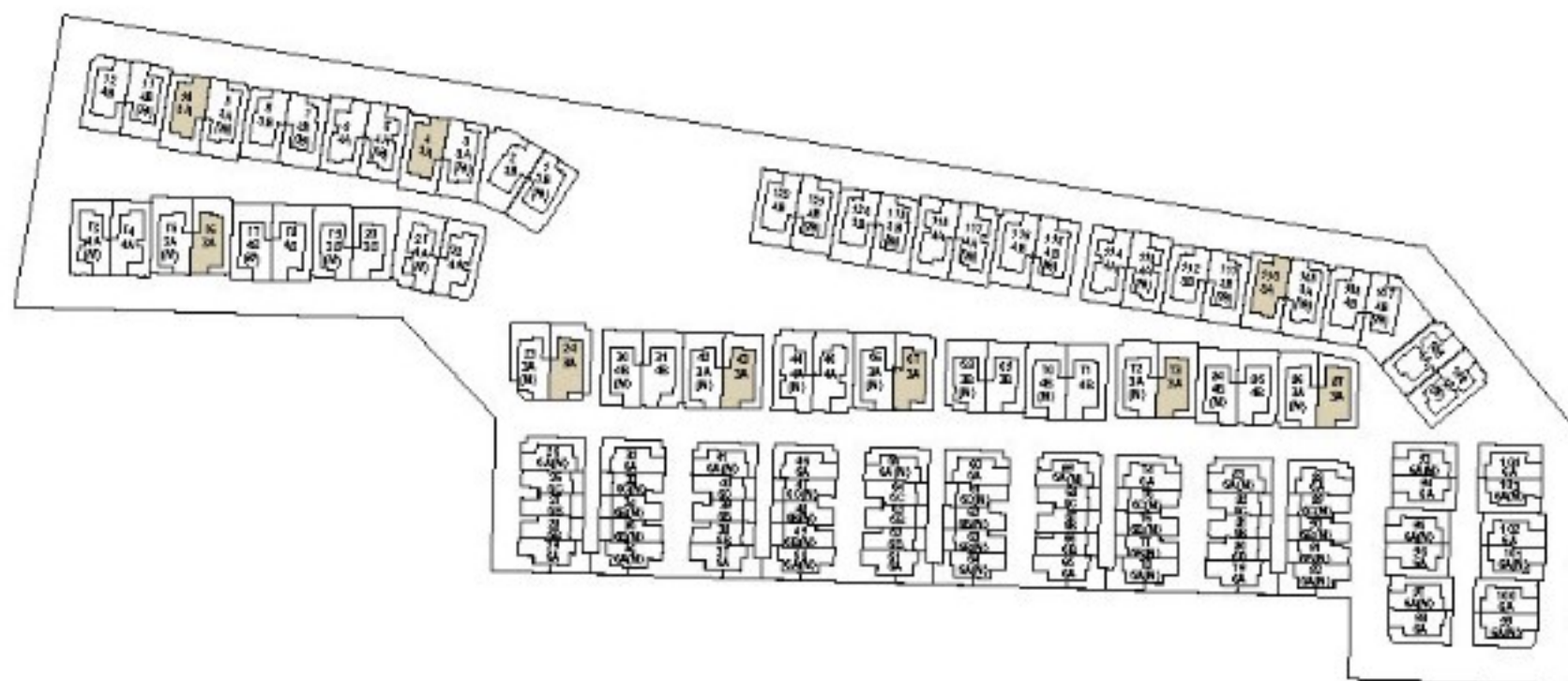
3 BEDROOM VILLA
Villa Numbers 4, 10, 16, 24, 43, 57, 73, 87 & 110
Type 3A



Ground Floor



First Floor



Built Up Area	441.16 m ²	4,748.61 ft ²
---------------	-----------------------	--------------------------

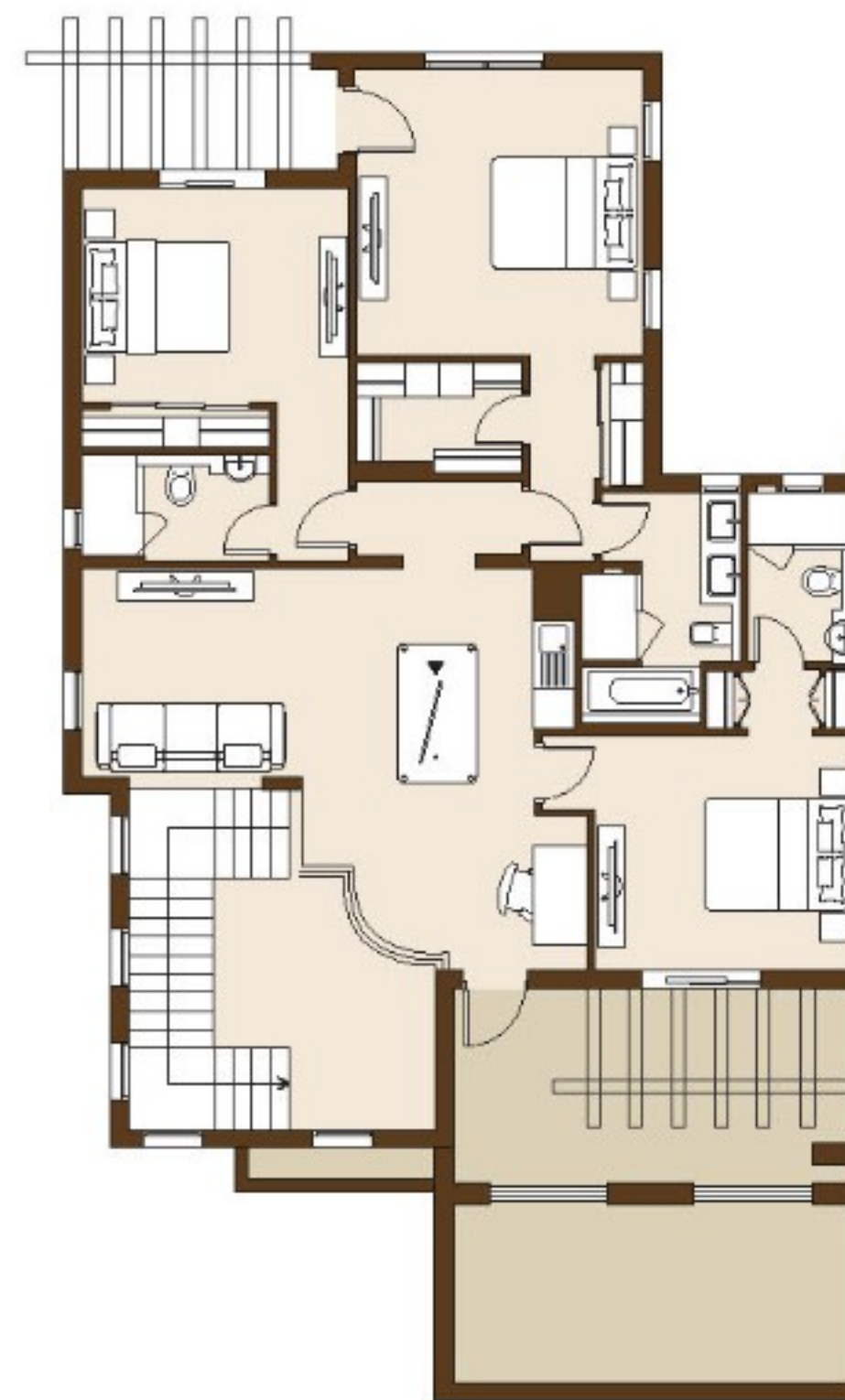
Drawings are provided by our consultants. All dimensions, features and amenities are approximate at time of printing. Actual size may vary from stated area. Drawings not to scale E & OE. The developer reserves the right to make revisions to the floor plans and any features, materials and dimensions mentioned without further notice.

3 Bedroom - 3B

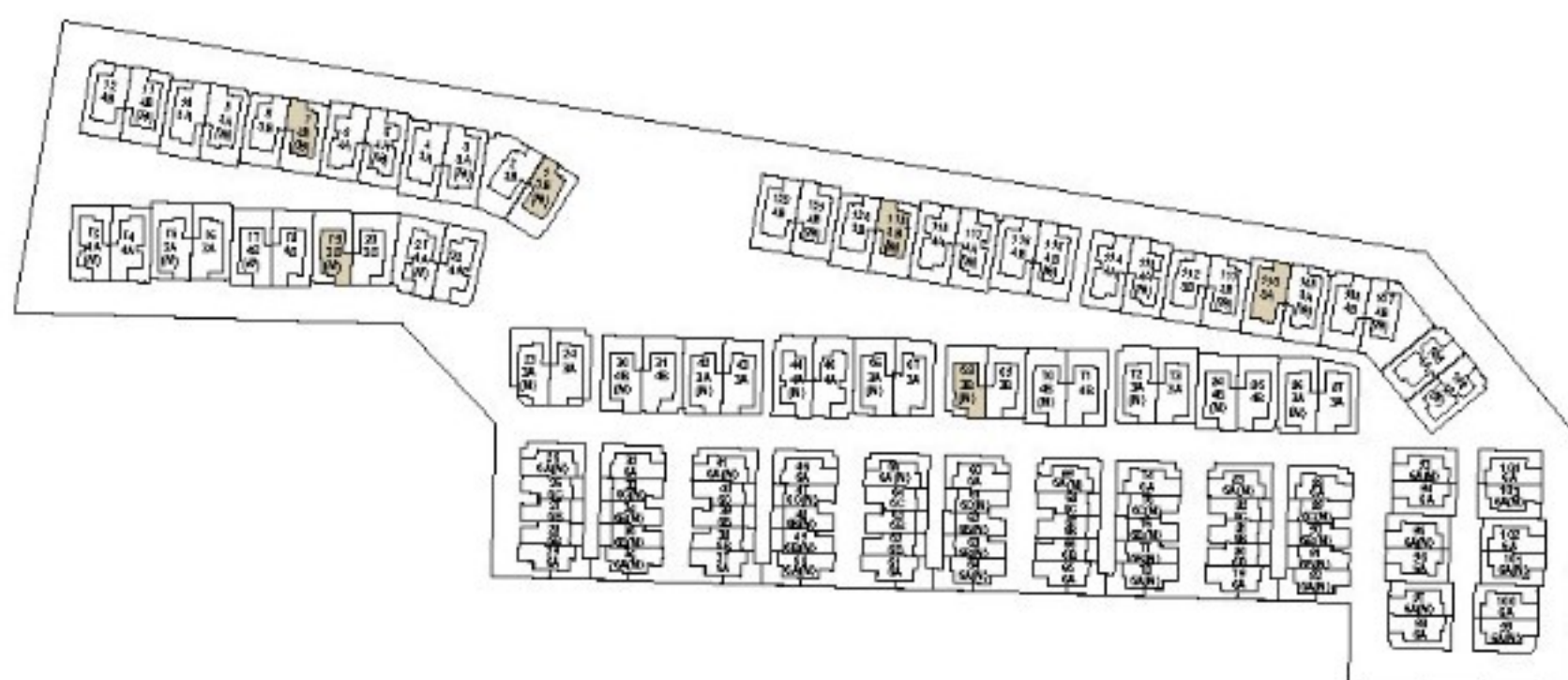
3 BEDROOM VILLA
Villa Numbers 1, 7, 19, 58, 111 & 119
Type 3B (M)



Ground Floor



First Floor

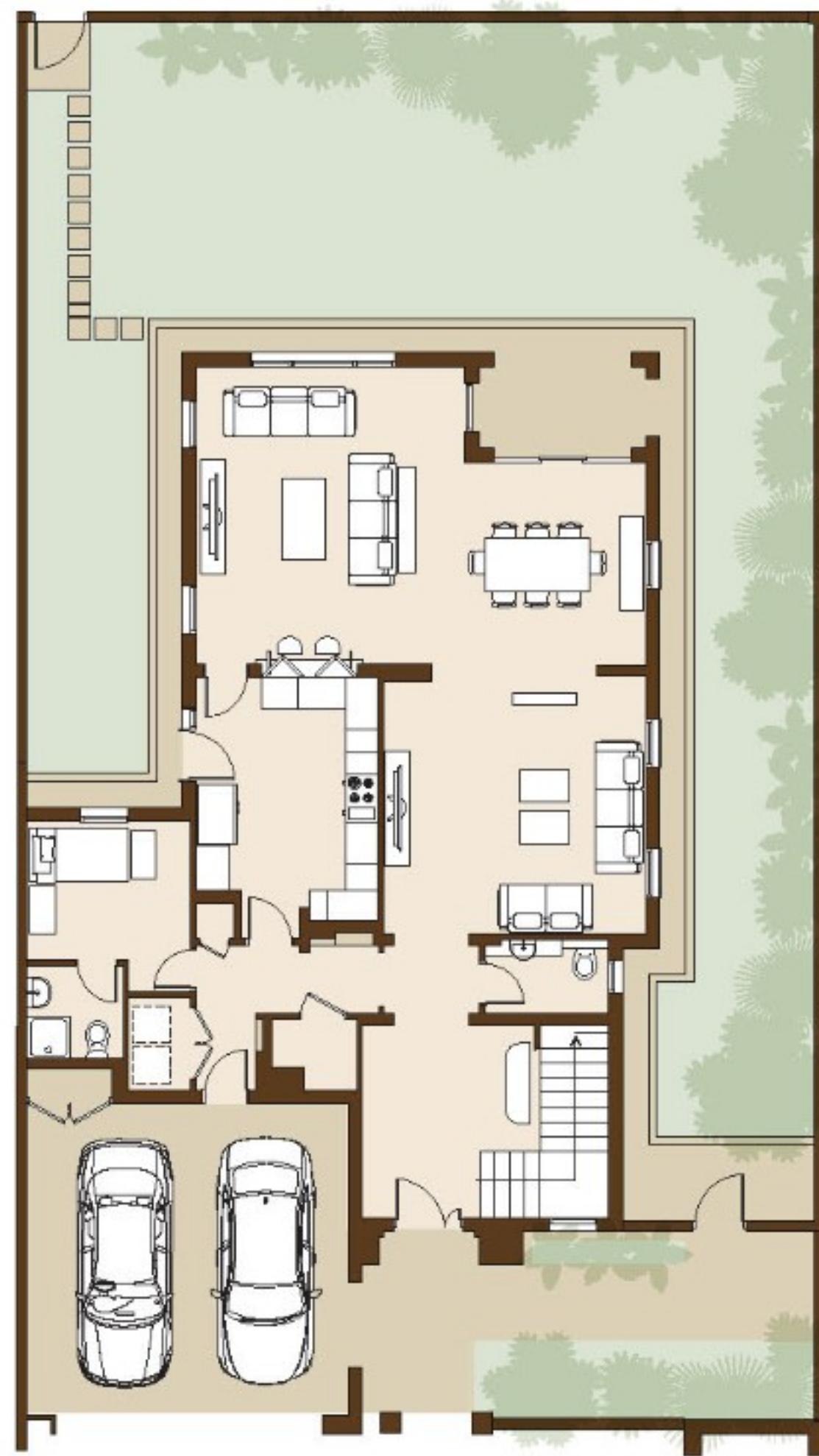


Built Up Area	376.27 m ²	4,050.14 ft ²
---------------	-----------------------	--------------------------

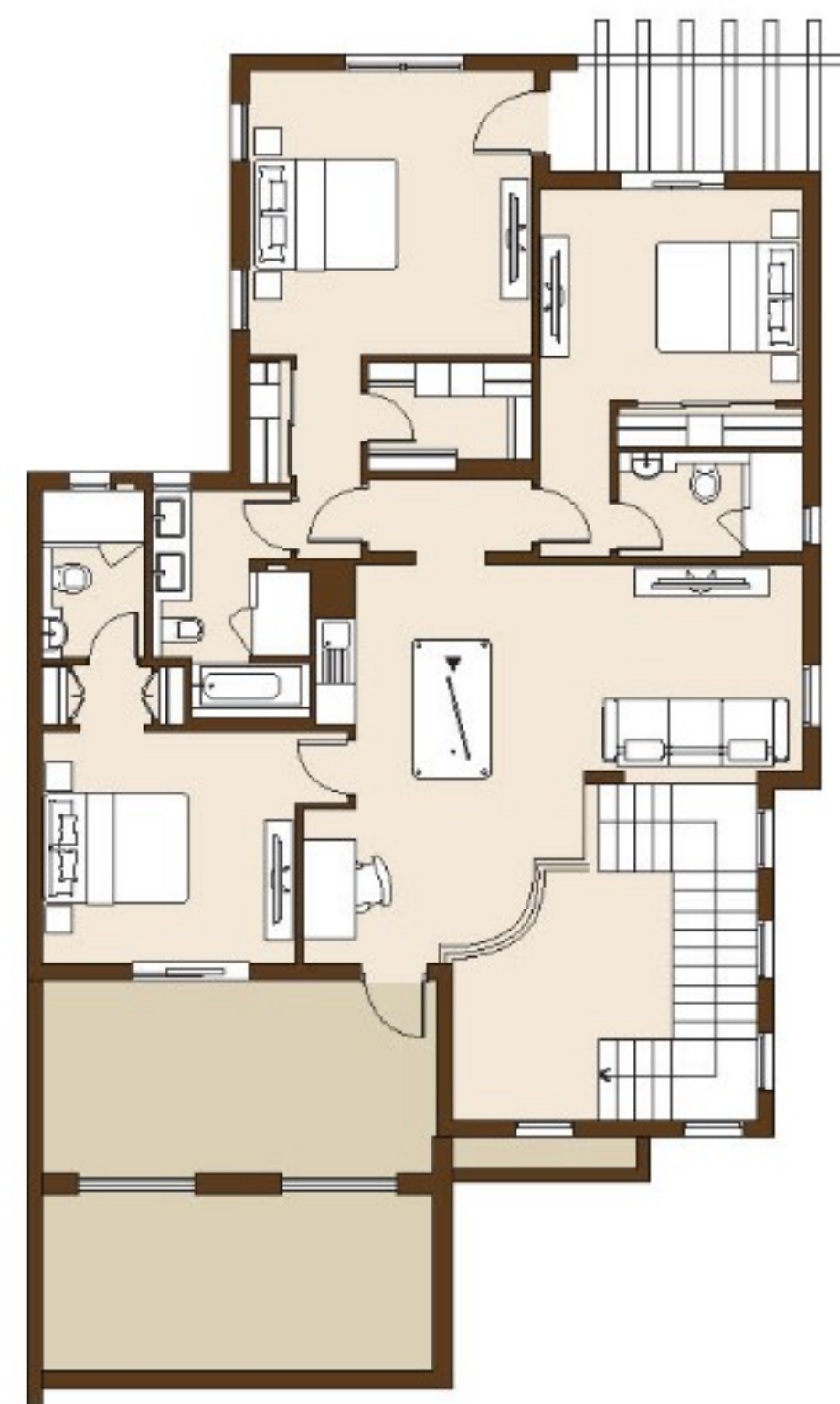
Drawings are provided by our consultants. All dimensions, features and amenities are approximate at time of printing. Actual size may vary from stated area. Drawings not to scale E & OE. The developer reserves the right to make revisions to the floor plans and any features, materials and dimensions mentioned without further notice.

3 Bedroom - 3B(M)

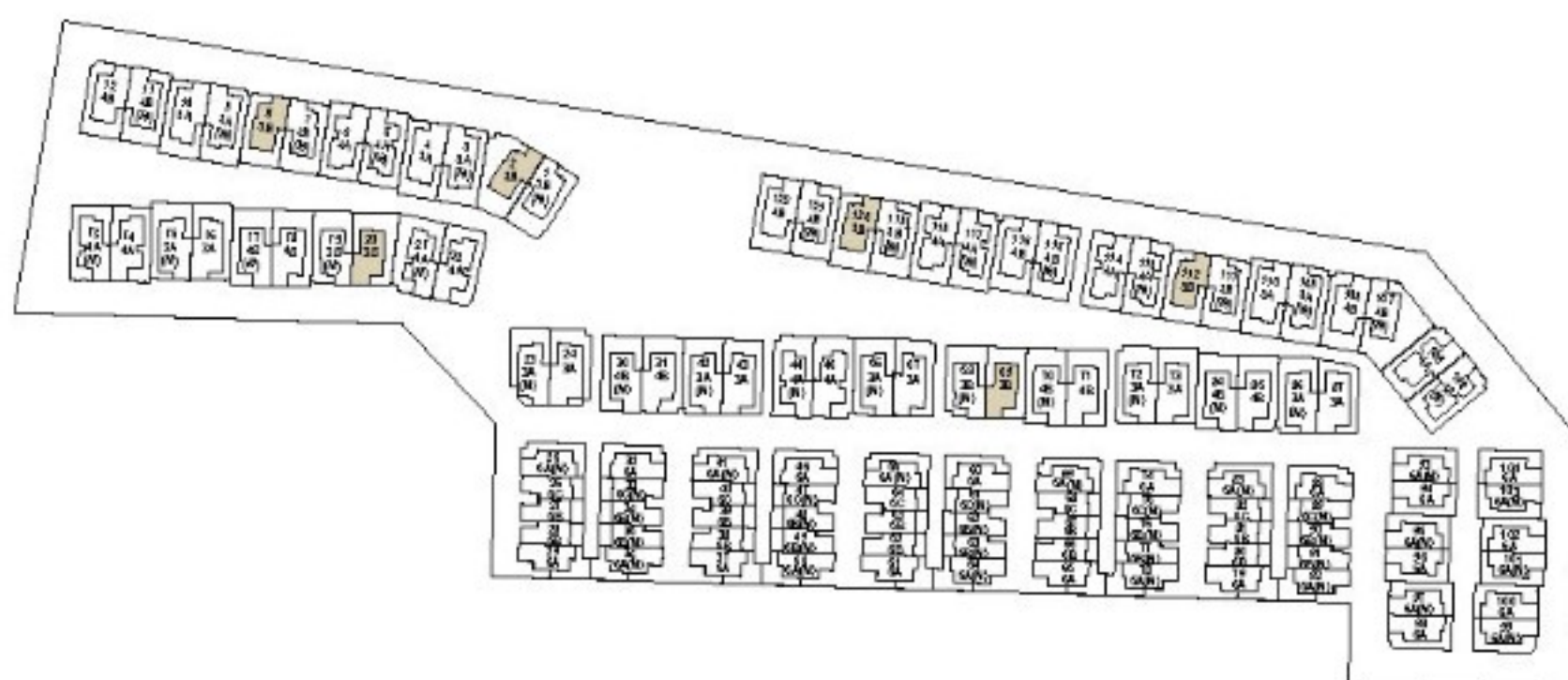
3 BEDROOM VILLA
Villa Numbers 2, 8, 20, 59, 112 & 120
Type 3B



Ground Floor



First Floor

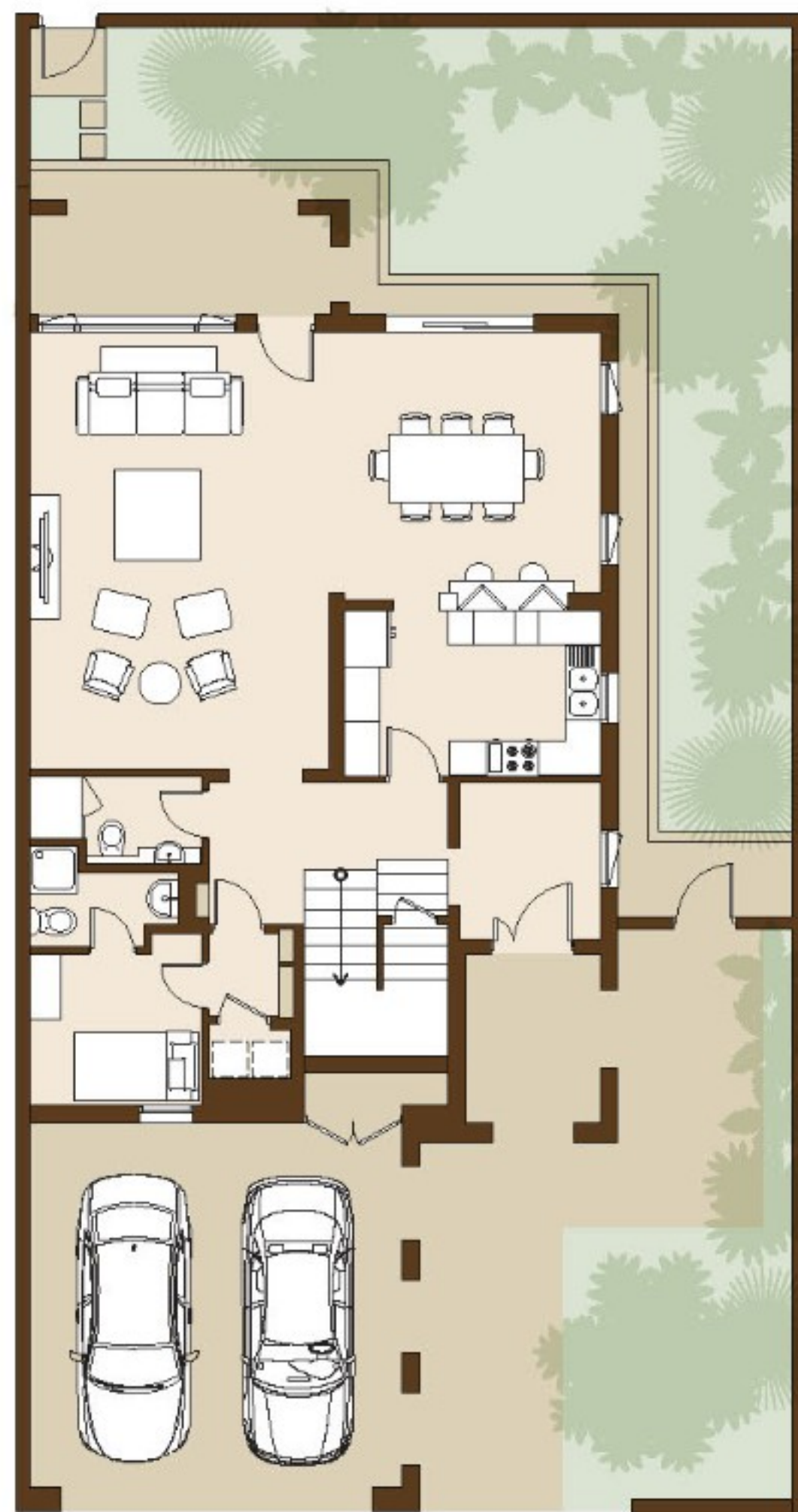


Built Up Area	376.27 m ²	4,050.14 ft ²
---------------	-----------------------	--------------------------

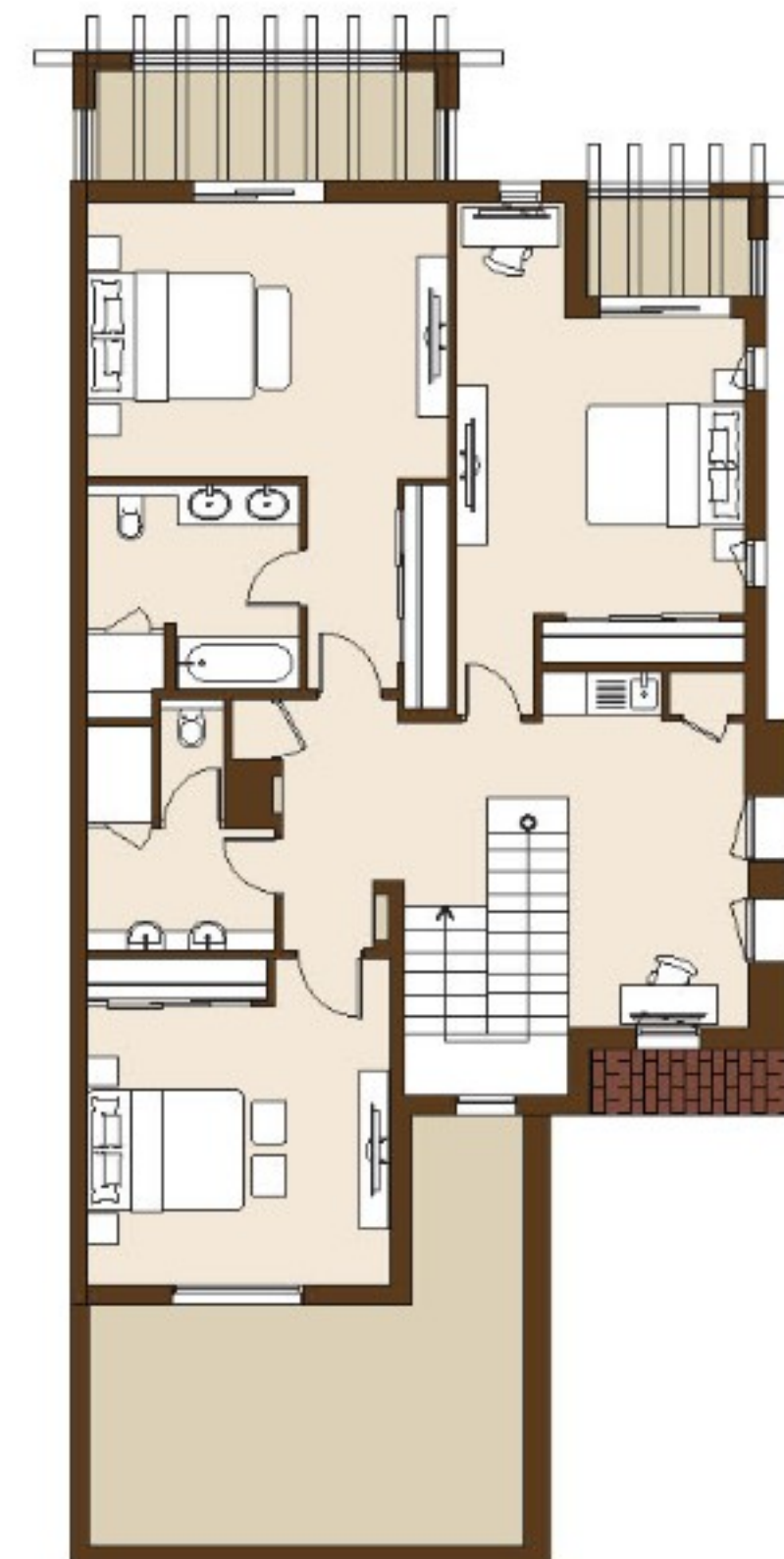
Drawings are provided by our consultants. All dimensions, features and amenities are approximate at time of printing. Actual size may vary from stated area. Drawings not to scale E & OE. The developer reserves the right to make revisions to the floor plans and any features, materials and dimensions mentioned without further notice.

3 Bedroom - 5A

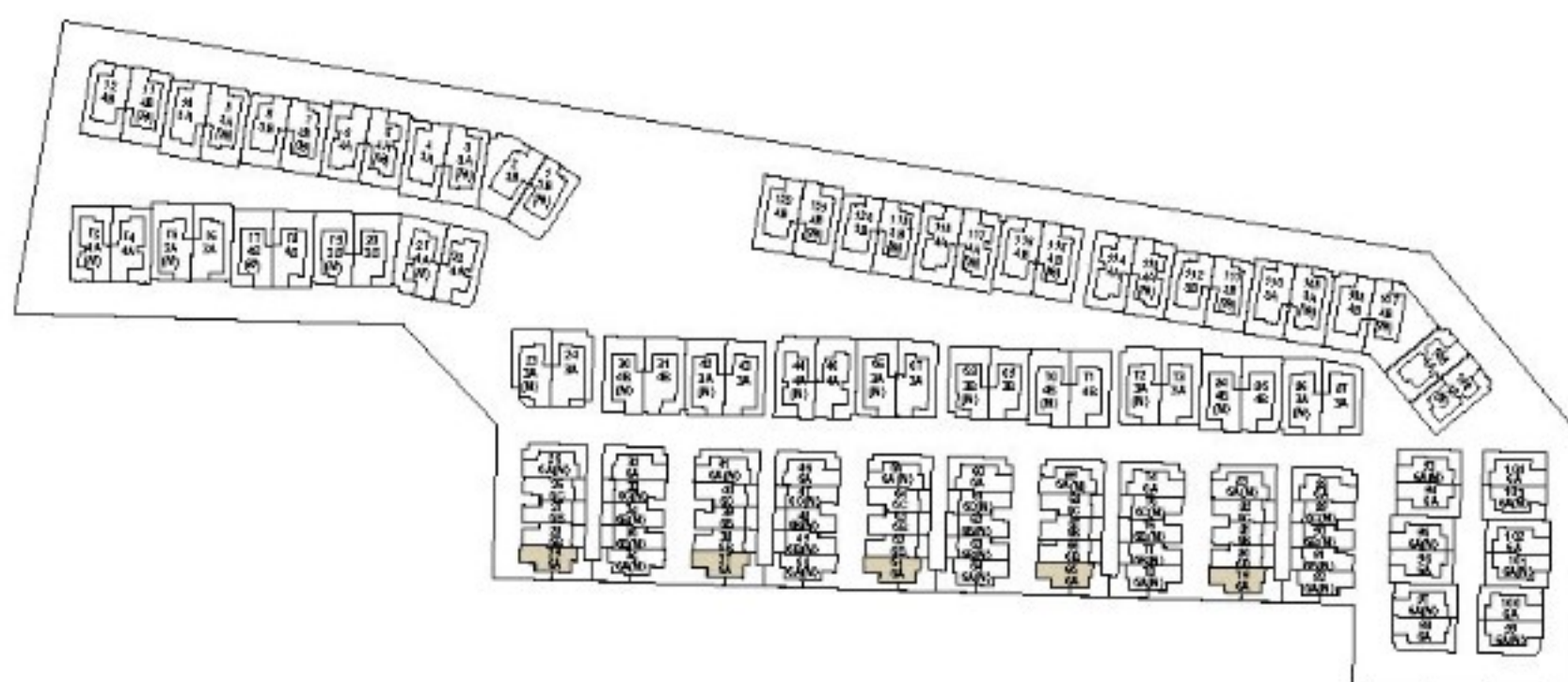
3 BEDROOM TOWNHOUSE
Villa Numbers 29, 37, 51, 65 & 79
Type 5A



Ground Floor



First Floor

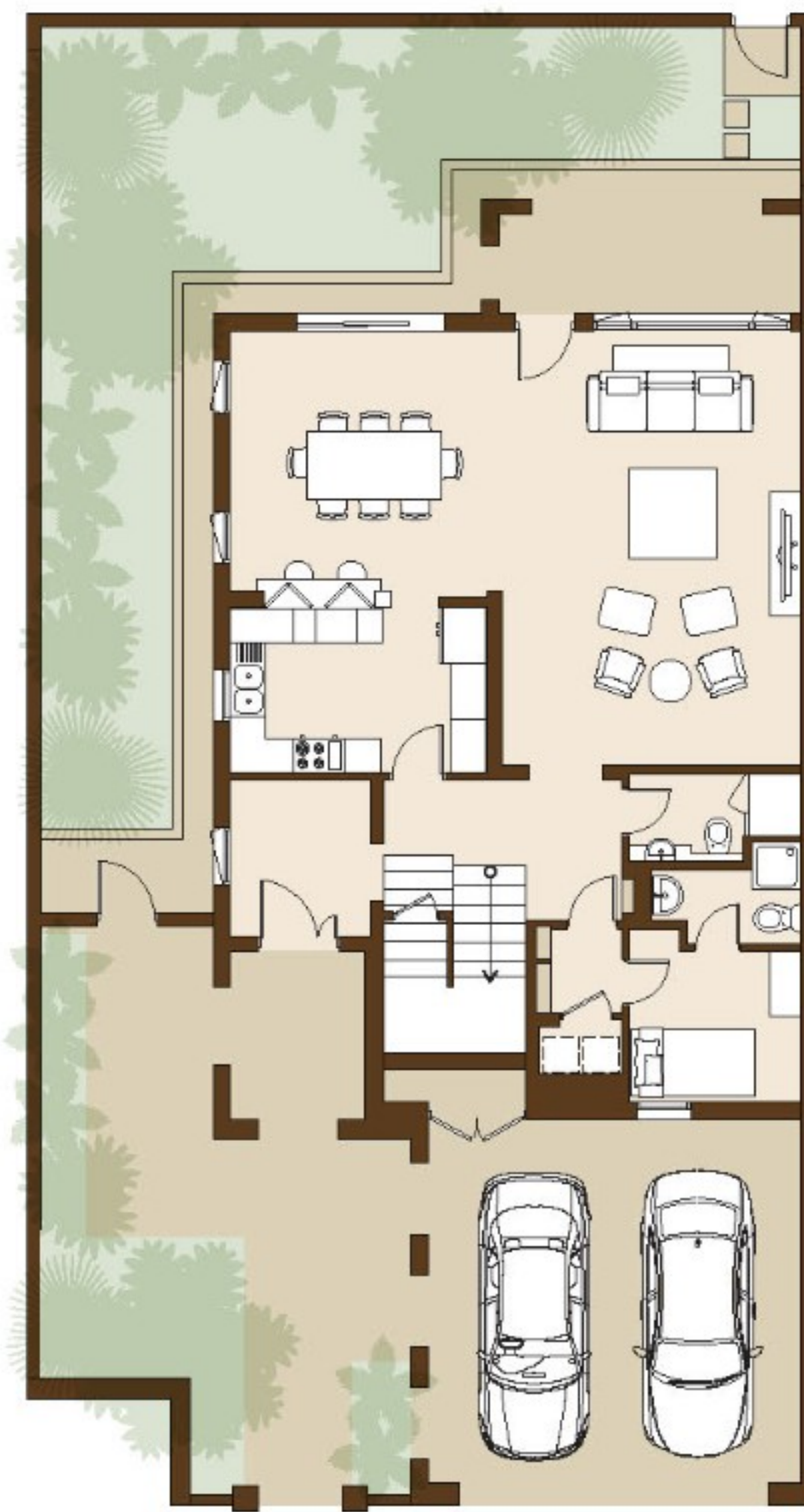


Built Up Area	316.58 m ²	3,407.64 ft ²
---------------	-----------------------	--------------------------

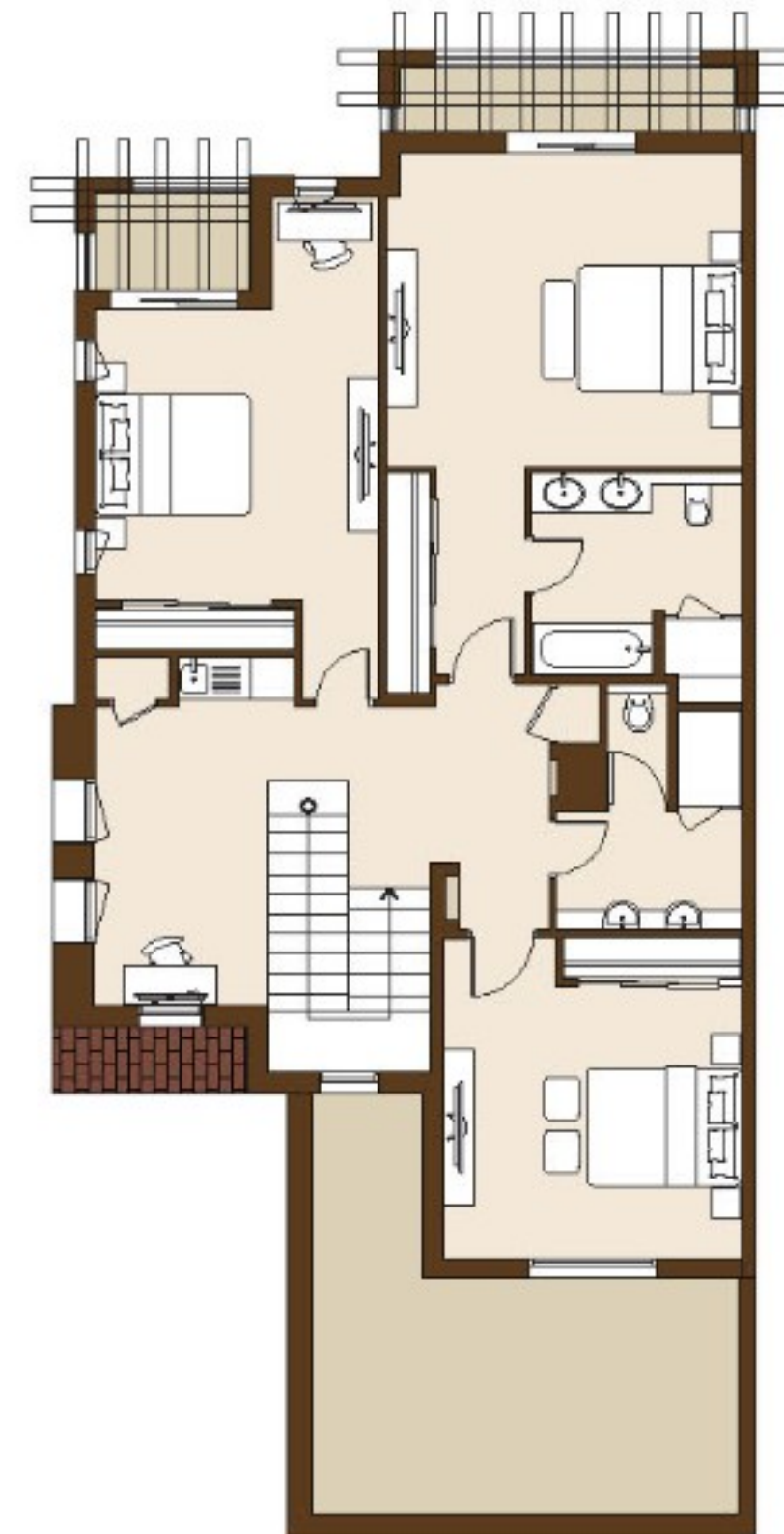
Drawings are provided by our consultants. All dimensions, features and amenities are approximate at time of printing. Actual size may vary from stated area. Drawings not to scale E & OE. The developer reserves the right to make revisions to the floor plans and any features, materials and dimensions mentioned without further notice.

3 Bedroom - 5A(M)

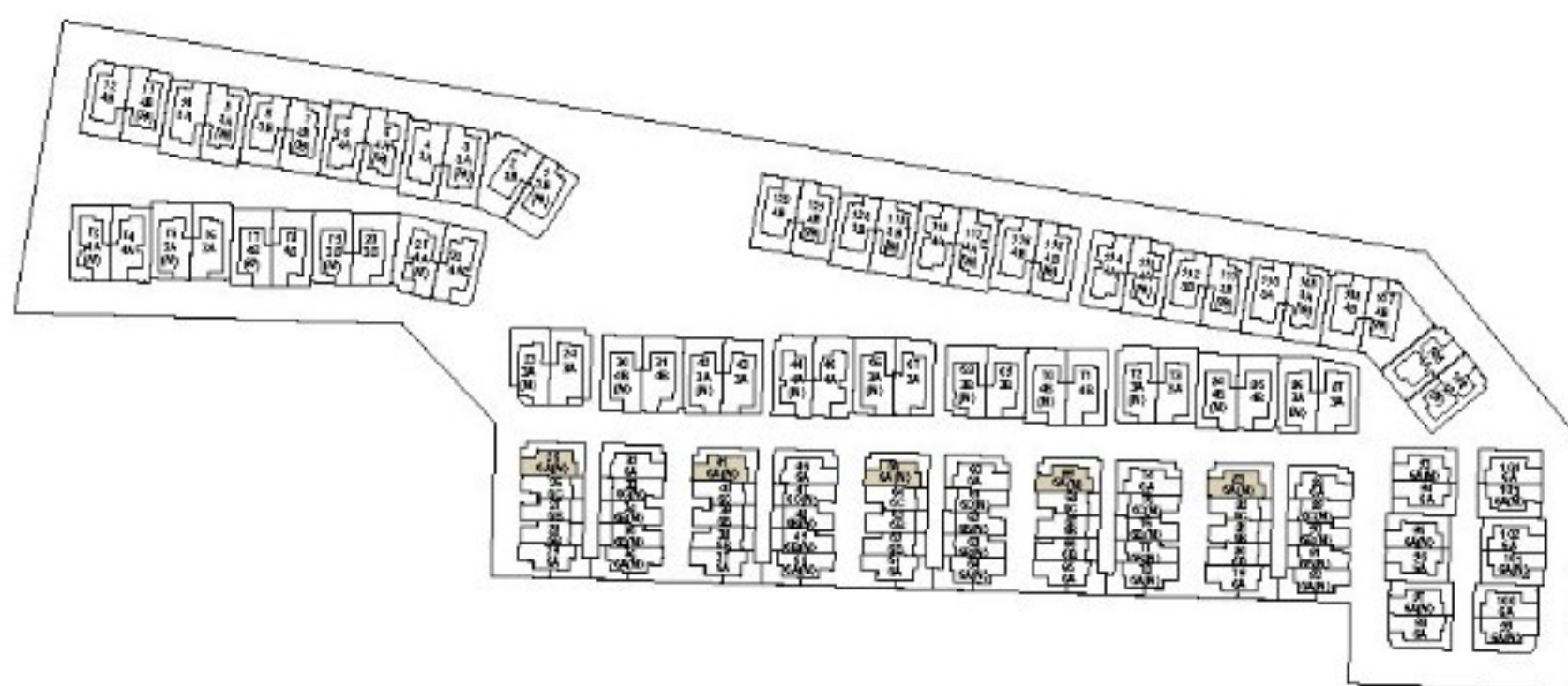
3 BEDROOM TOWNHOUSE
Villa Numbers 25, 41, 55, 69 & 83
Type 5A (M)



Ground Floor



First Floor



Built Up Area	316.69 m ²	3,408.82 ft ²
---------------	-----------------------	--------------------------

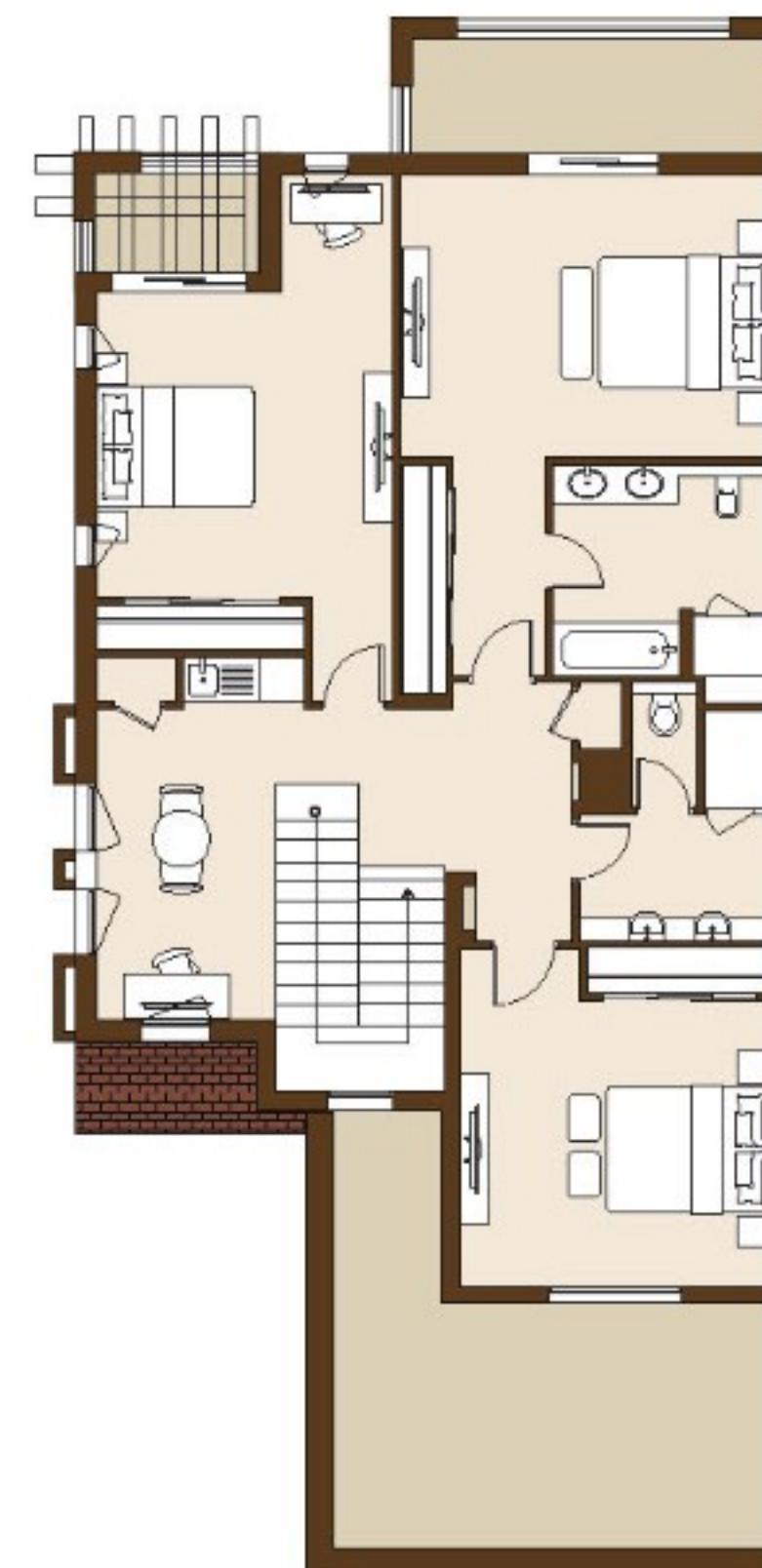
Drawings are provided by our consultants. All dimensions, features and amenities are approximate at time of printing. Actual size may vary from stated area. Drawings not to scale E & OE. The developer reserves the right to make revisions to the floor plans and any features, materials and dimensions mentioned without further notice.

3 Bedroom - 6A

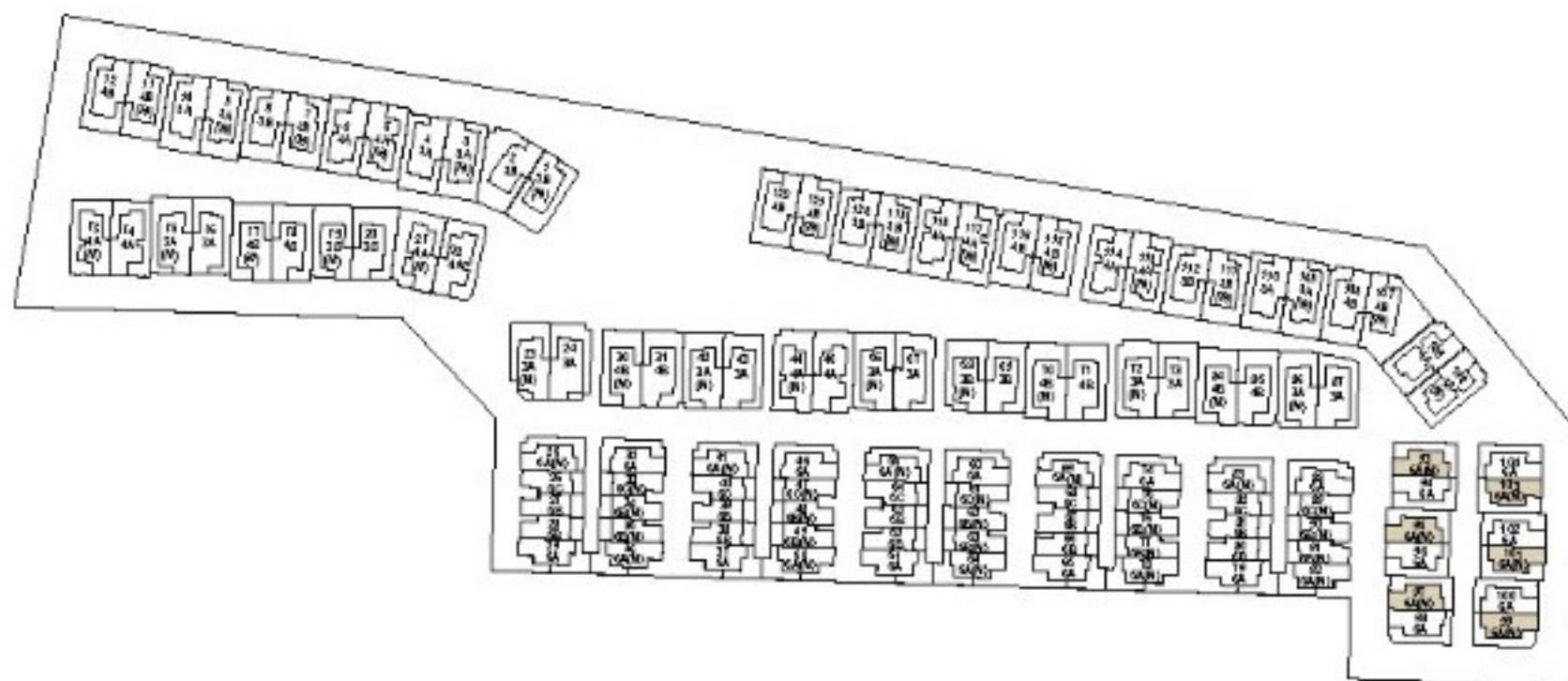
3 BEDROOM VILLA
Villa Numbers 93, 95, 97, 99, 101 & 103
Type 6A (M)



Ground Floor



First Floor

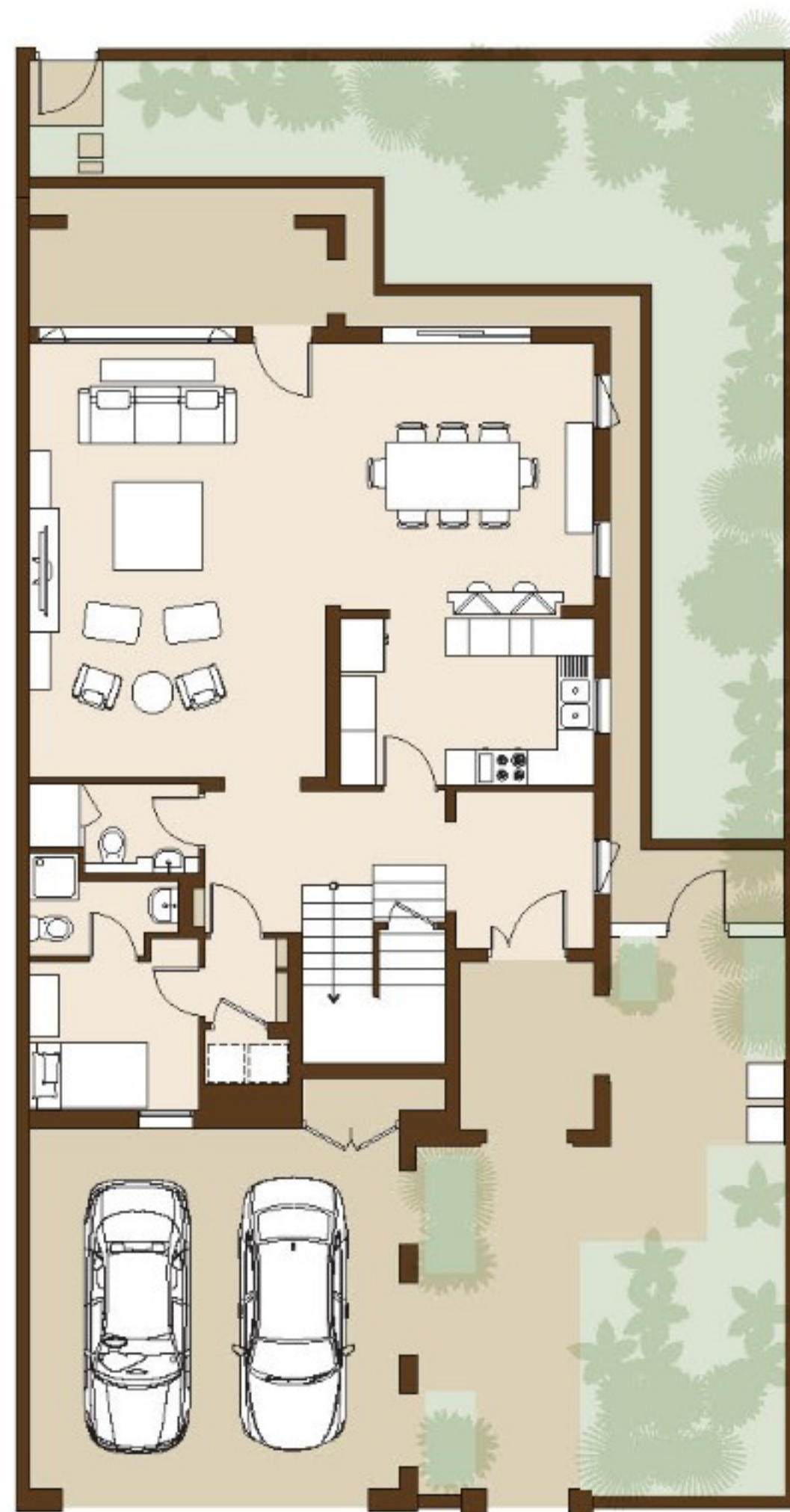


Built Up Area	316.08 m ²	3,402.26 ft ²
---------------	-----------------------	--------------------------

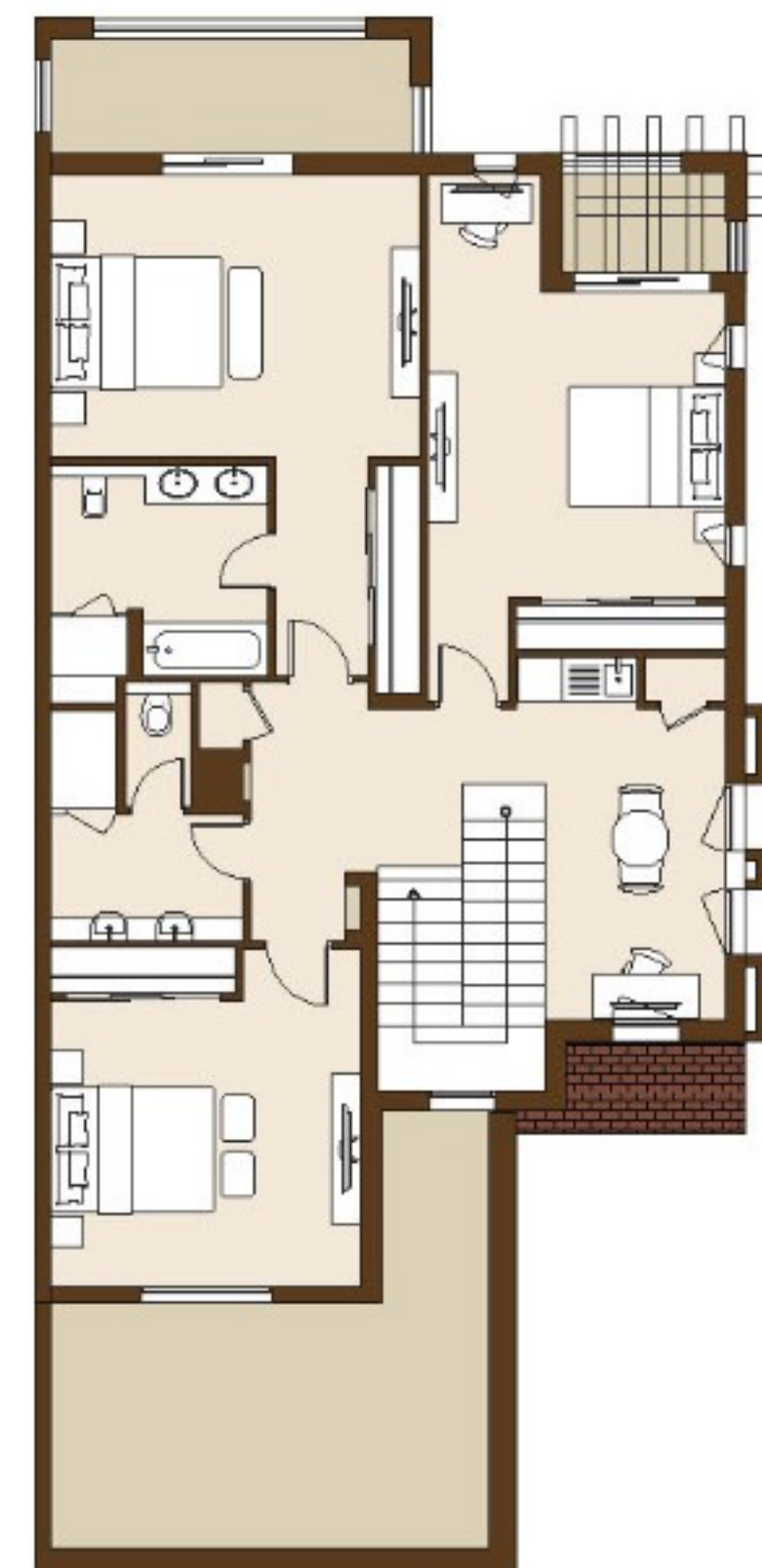
Drawings are provided by our consultants. All dimensions, features and amenities are approximate at time of printing. Actual size may vary from stated area. Drawings not to scale E & OE. The developer reserves the right to make revisions to the floor plans and any features, materials and dimensions mentioned without further notice.

3 Bedroom - 6A(M)

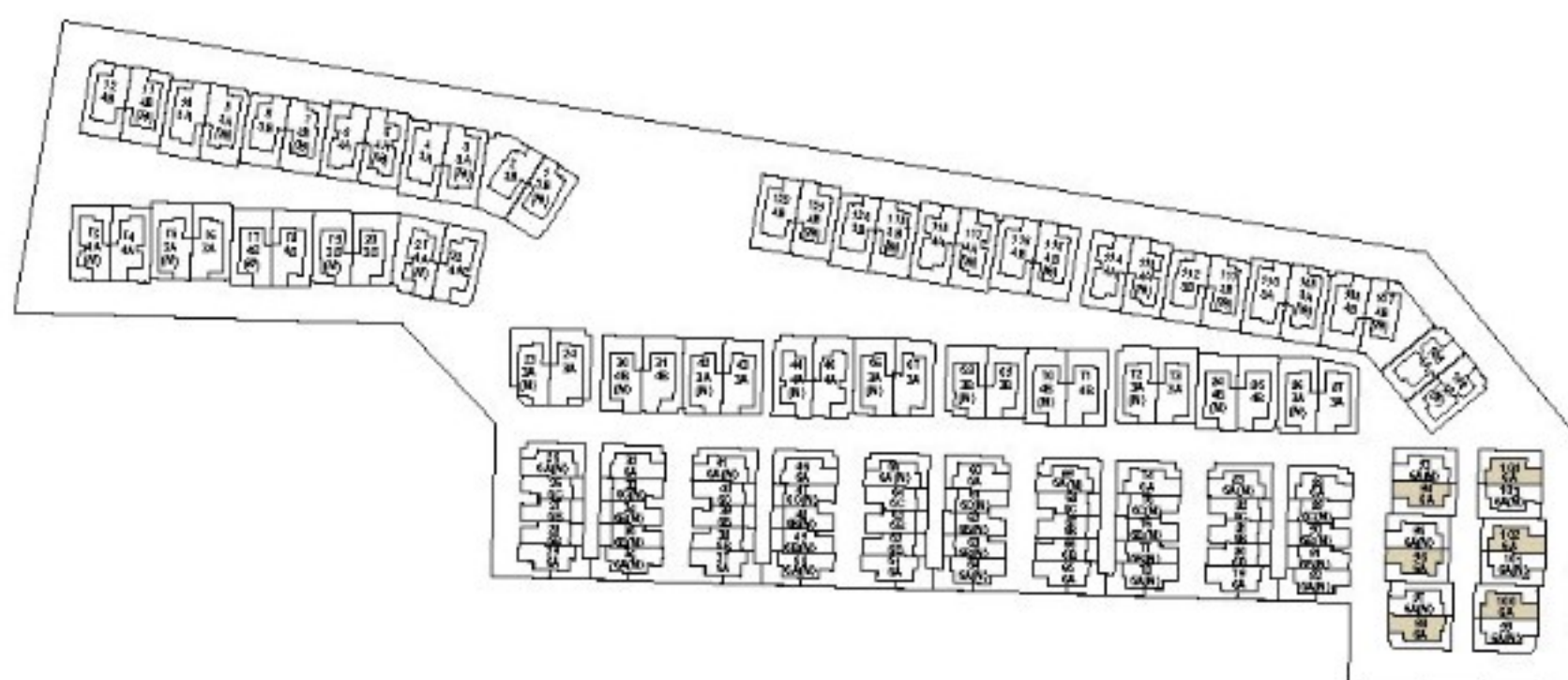
3 BEDROOM VILLA
Villa Numbers 94, 96, 98, 100, 102 & 104
Type 6A



Ground Floor



First Floor



Built Up Area	316.08 m ²	3,402.26 ft ²
---------------	-----------------------	--------------------------

Drawings are provided by our consultants. All dimensions, features and amenities are approximate at time of printing. Actual size may vary from stated area. Drawings not to scale E & OE. The developer reserves the right to make revisions to the floor plans and any features, materials and dimensions mentioned without further notice.

4 Bedroom - 4A

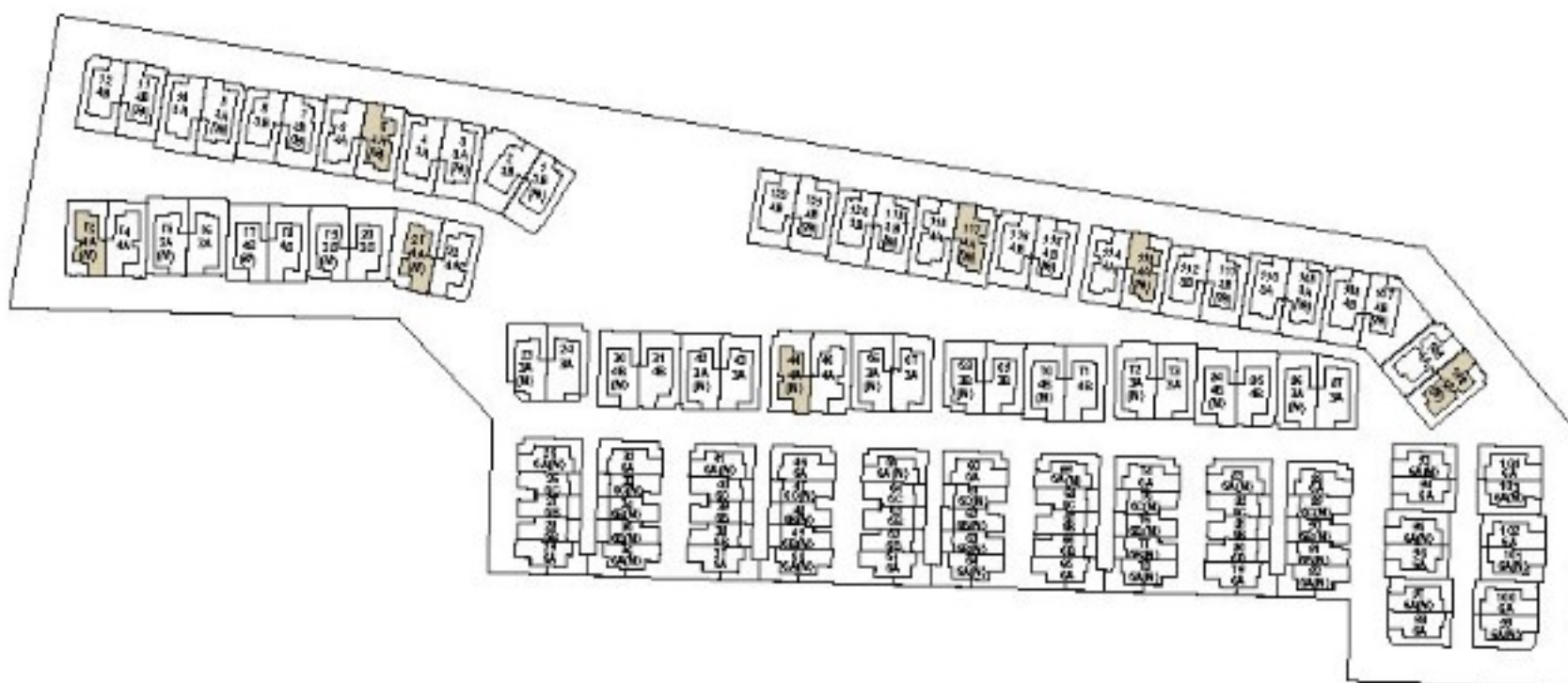
4 BEDROOM VILLA
Villa Numbers 5, 13, 21, 44, 105, 113 & 117
Type 4A (M)



Ground Floor



First Floor



Built Up Area	416.37 m ²	4,481.77 ft ²
---------------	-----------------------	--------------------------

Drawings are provided by our consultants. All dimensions, features and amenities are approximate at time of printing. Actual size may vary from stated area. Drawings not to scale E & OE. The developer reserves the right to make revisions to the floor plans and any features, materials and dimensions mentioned without further notice.

4 Bedroom - 4A(M)

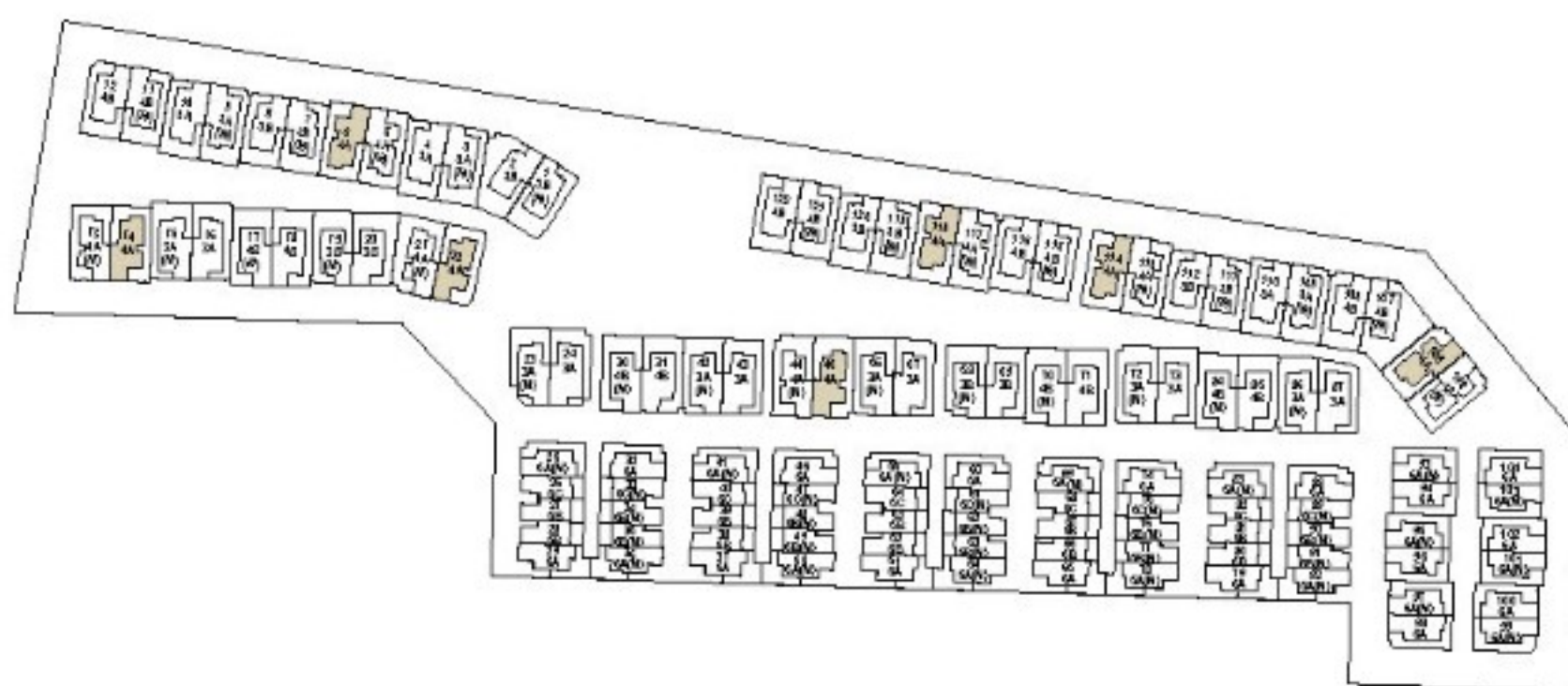
4 BEDROOM VILLA
Villa Numbers 6, 14, 22, 45, 106, 114 & 118
Type 4A



Ground Floor



First Floor



Built Up Area	416.34 m ²	4,481.45 ft ²
---------------	-----------------------	--------------------------

Drawings are provided by our consultants. All dimensions, features and amenities are approximate at time of printing. Actual size may vary from stated area. Drawings not to scale E & OE. The developer reserves the right to make revisions to the floor plans and any features, materials and dimensions mentioned without further notice.

4 Bedroom - 4B

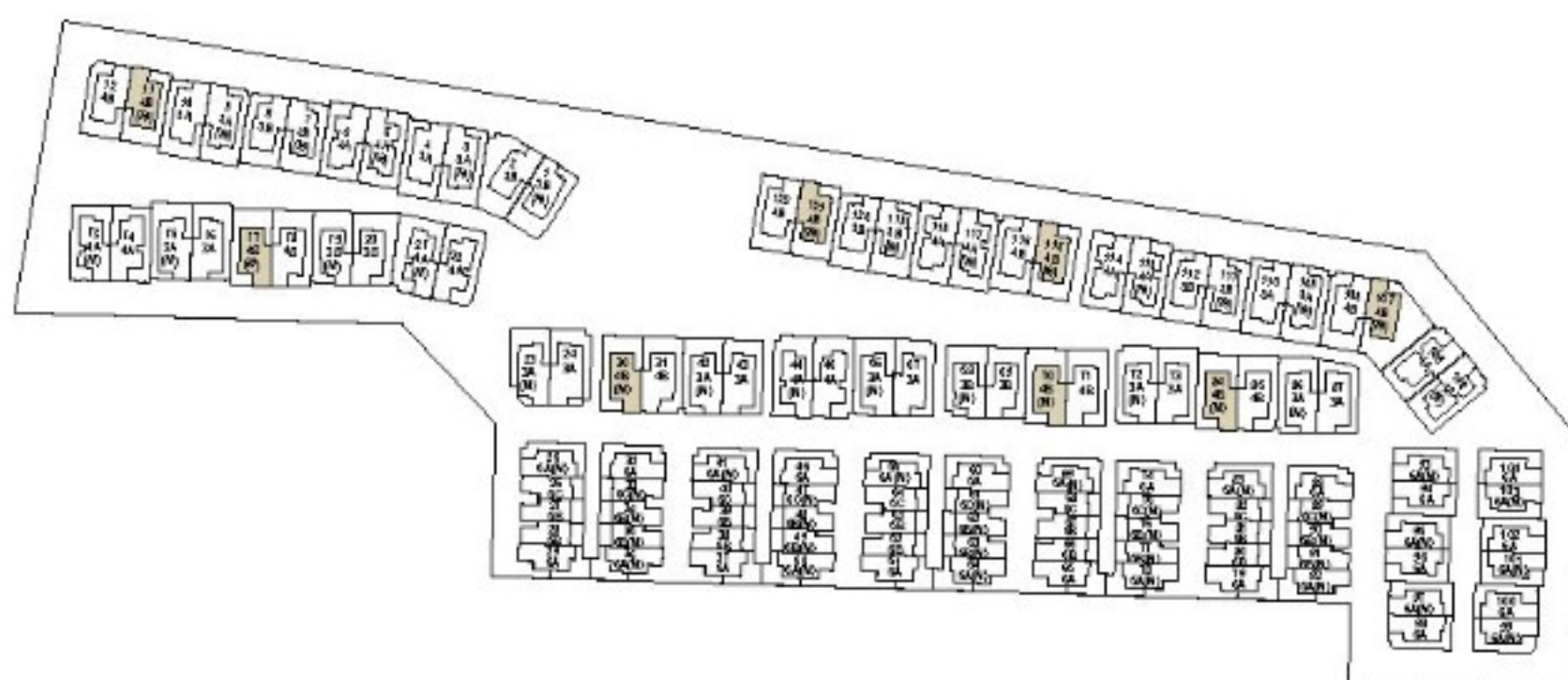
4 BEDROOM VILLA
Villa Numbers 11, 17, 30, 70, 84, 107, 115 & 121
Type 4B (M)



Ground Floor



First Floor



Built Up Area	410 m ²	4,413.20 ft ²
---------------	--------------------	--------------------------

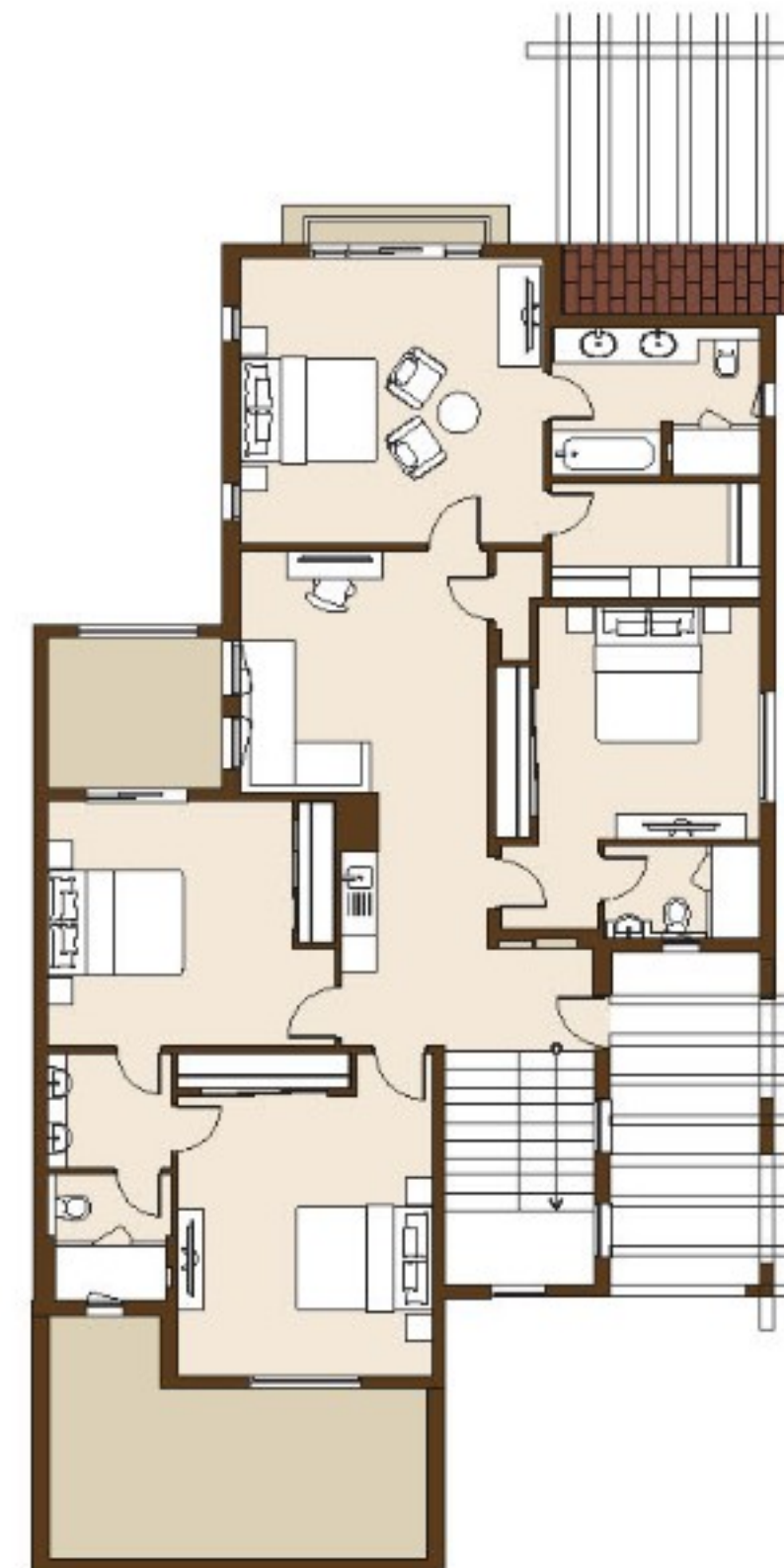
Drawings are provided by our consultants. All dimensions, features and amenities are approximate at time of printing. Actual size may vary from stated area. Drawings not to scale E & OE. The developer reserves the right to make revisions to the floor plans and any features, materials and dimensions mentioned without further notice.

4 Bedroom - 4B(M)

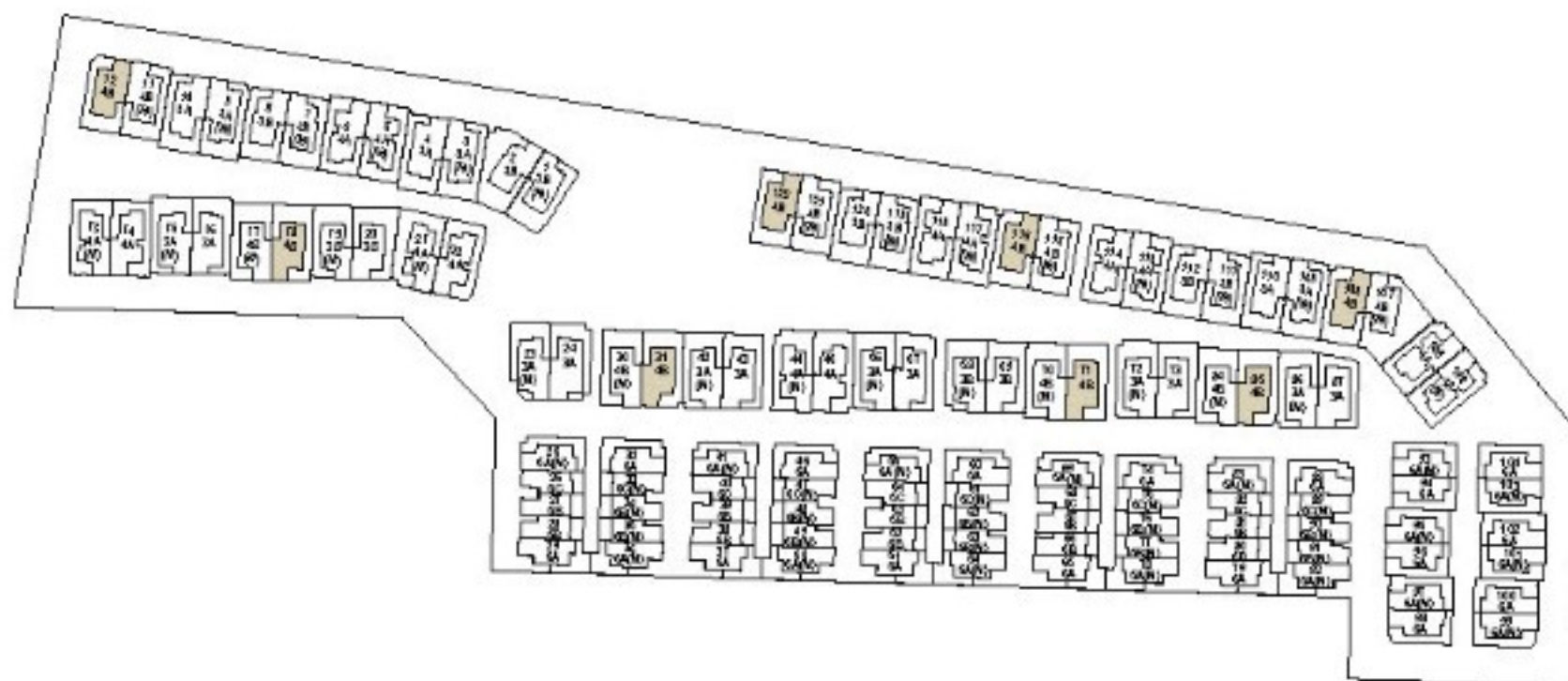
4 BEDROOM VILLA
Villa Numbers 12,18, 31, 71, 85, 108, 116 & 122
Type 4B



Ground Floor



First Floor



Built Up Area	410.15 m ²	4,414.82 ft ²
---------------	-----------------------	--------------------------

Drawings are provided by our consultants. All dimensions, features and amenities are approximate at time of printing. Actual size may vary from stated area. Drawings not to scale E & OE. The developer reserves the right to make revisions to the floor plans and any features, materials and dimensions mentioned without further notice.



TANAMI
P R O P E R T I E S

CONTACT US

 +971 4 248 3400 |  +971 55 162 3236

Email Us

info@tanamiproperties.ae

For More Info...

www.tanamiproperties.com/Projects/Mushrif-Village



ADDRESS

Office 3405, Marina Plaza,
Al Marsa Street, Dubai Marina, UAE