

OAKLEY

S Q U A R E R E S I D E N C E S



A
NATURAL ESCAPE
FROM EVERYDAY LIFE




ELLINGTON
PROPERTIES

SOL
PROPERTIES

Ellington Properties is delighted to partner with Sol Properties on this new project in Jumeirah Village Circle. Ellington Properties and Sol Properties will combine their passion and expertise to develop a new residential development with signature amenities. Together, we share a goal to elevate people's lifestyles through developing beautiful, high-quality homes and building thriving communities.

Ellington Properties is Dubai's leading boutique property developer that values functionality as much as aesthetics.

Ellington homes are designed to inspire, with a vision to create living spaces that add value and contentment every day, supporting people as they journey towards their dreams and aspirations. Built in thoughtfully selected locations to ensure superb long-term return on investment, Ellington Properties is known for its resort-style pool courtyards, astounding landscaping, comprehensive fitness and child play facilities, and tailored interiors.

Sol Properties is a well-established property developer bringing four decades of experience with more than 250 projects, including residential, hospitality, retail and commercial developments.

JUMEIRAH VILLAGE CIRCLE

Jumeirah Village Circle is a tranquil, serene community situated in the heart of Dubai and is close to all the major attractions and amenities the city has to offer. The neighborhood is home to several parks and schools with a selection of entertainment and leisure options. Adding to its strategic location is a mix of multi-family residential complexes that are perfect for families and residents looking for a quiet shelter from the hustle and bustle of the city.



MOMENTS AWAY FROM
THE HUSTLE AND
BUSTLE OF DUBAI



2 Minutes
Circle Mall



7 Minutes
Dubai Hills Mall



10 Minutes
Mall of the Emirates



10 Minutes
Dubai Marina



12 Minutes
Ain Dubai



15 Minutes
Downtown Dubai
& Burj Khalifa



15 Minutes
Burj Al Arab



18 Minutes
Palm Jumeirah



20 Minutes
Jumeirah Beach



20 Minutes
Museum of the Future



28 Minutes
Dubai World Central



30 Minutes
Dubai International
Airport

ELLINGTON PROPERTIES IN JUMEIRAH VILLAGE CIRCLE

- | | | | |
|----|---------------------------------|----|------------------|
| 01 | OAKLEY SQUARE RESIDENCES | 07 | BELGRAVIA SQUARE |
| 02 | THE PORTMAN | 08 | BELGRAVIA II |
| 03 | BELGRAVIA HEIGHTS I | 09 | HARRINGTON HOUSE |
| 04 | THE SLOANE | 10 | BELGRAVIA III |
| 05 | HAMILTON HOUSE | 11 | EATON PLACE |
| 06 | BELGRAVIA | 12 | SOMERSET MEWS |



OAKLEY
SQUARE RESIDENCES

WELCOME TO
OAKLEY
SQUARE RESIDENCES

Oakley Square Residences with its magnificent lawns, natural surroundings, and spacious open space, provides a solitary retreat for residents to lead a comfortable life, away from the city's chaos. From fresh mornings to tranquil evenings, a peaceful lifestyle within the residential development awaits.

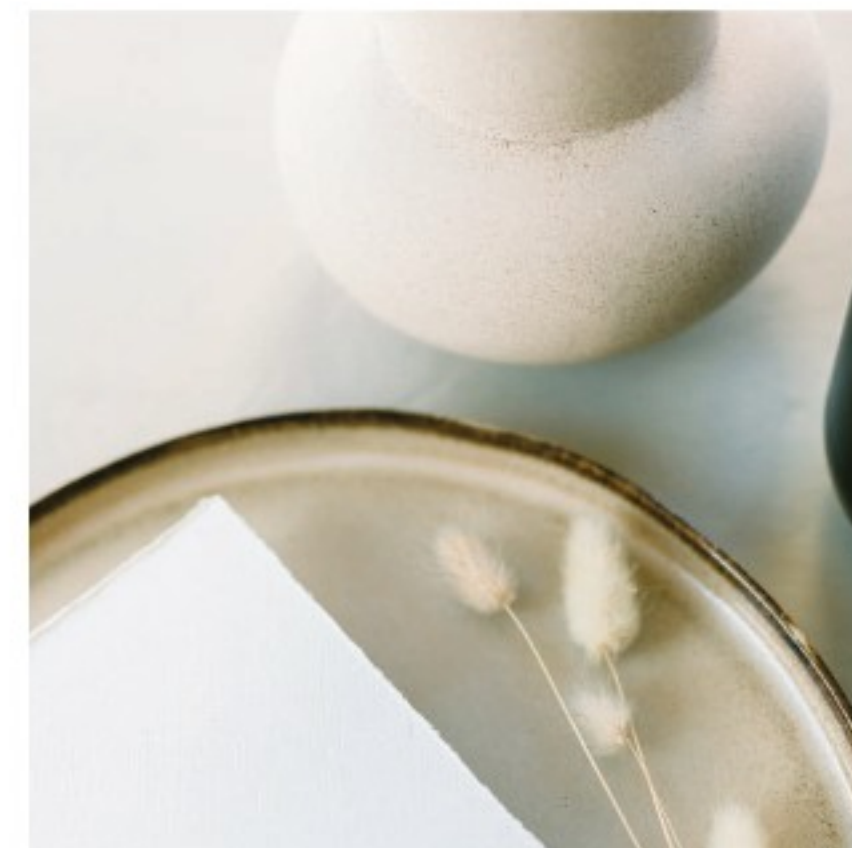
With its verdant green lush spaces and natural environment, the residences are designed to suit your lifestyle needs so that your home can complement your busy schedules. Comprising of 269 residential units from modern studios, 1 and 2 bedroom apartments, Oakley Square Residences offers residents' abundant space and amenities to relax and connect to nature.







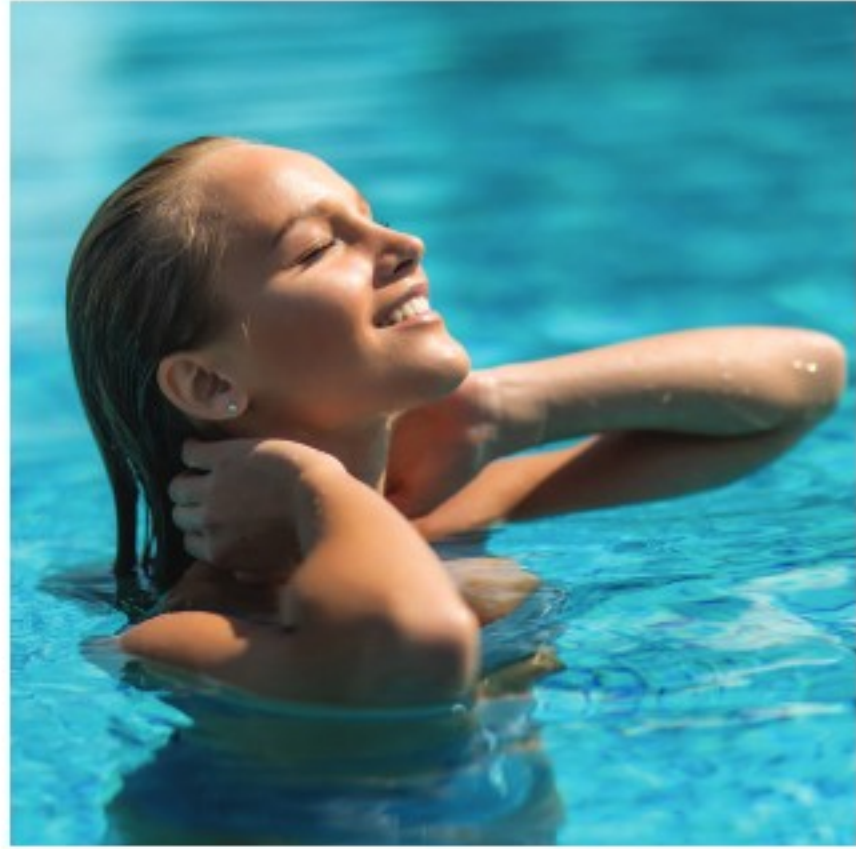
LOBBIES



Punctuated with a pendant light, the opulent style of the two lobbies is on full display upon entering the residential development. Featuring floor-to-ceiling windows, the lobbies boast the best views of the outdoors. A hotel-style lounge area dominates the space with ample corners to connect, socialize and entertain. Natural lights and green foliage flourish within the space complementing the outdoor view, to create a welcoming atmosphere for residents and visitors.



POOL DECK



Submerge in the waters of your own private paradise in the leisure and lap pool at Oakley Square Residences. An oasis of turquoise water surrounded by palm trees that blend well with the outdoors to create a tranquil tropical setting, the pool features a Baja shelf, sun loungers, cabanas, and a pool spa for a total holiday retreat. While a daytime swim in Oakley Square Residences' pool is impressive, the pool deck gets even better after dusk with its underwater lighting and lush landscaping, providing a calming and magnificent view from each residential unit.







FITNESS CENTRE



Bring wellness into your lifestyle in the indoor and outdoor fitness centre at Oakley Square Residences. With state-of-the-art cardio and strength-training equipment, the studio provides a supreme fitness experience for every individual. Whether you prefer working out indoors or outdoors, the motivating atmosphere makes it a pleasant space to work out, day or night.

KIDS' ZONE



Serving as an extension of the pool deck, the shaded kids' pool is a paradise for little ones. A perfect way for children to cool down, the kid's pool allows children to create their own small adventures and socialize.

A shaded outdoor kids' play area equipped with play and climbing structures is also provided to invite children on a journey of discovery and development.





OUTDOOR ACTIVITY AREA



Oakley Square Residences offers its residents plenty of outdoor activities in the midst of a lush greenscape. Residents can enjoy a pleasant dine-out experience in the shaded barbecue area with friends and families, or an afternoon tea in the outdoor terrace area.

The outdoor activity areas include a Padel tennis court, games table zones and offers plenty of lounge areas within the courtyard space to connect and socialize in the community.

CINEMA ROOM



Get comfortable in the indoor lounge-style setting of Oakley Square Residences' cinema room. A private space for residents, the space offers a movie-going experience with premium visual and sound quality. Whether you want to throw a live sports party, host a movie screening or have few friends over to watch your favorite movie, the cinema room provides residents and their guests quality entertainment space within reach.





LIVING SPACE



A modern and welcoming space, the living space at Oakley Square Residences is designed with an open-floor layout that elegantly combines dining and kitchen into a functional and comfortable space. As one of the most frequent gathering spots for family and friends, the living space with its full-height windows offers plenty of natural light complemented by neutral-tone finishes and texture-rich accents.



BEDROOM

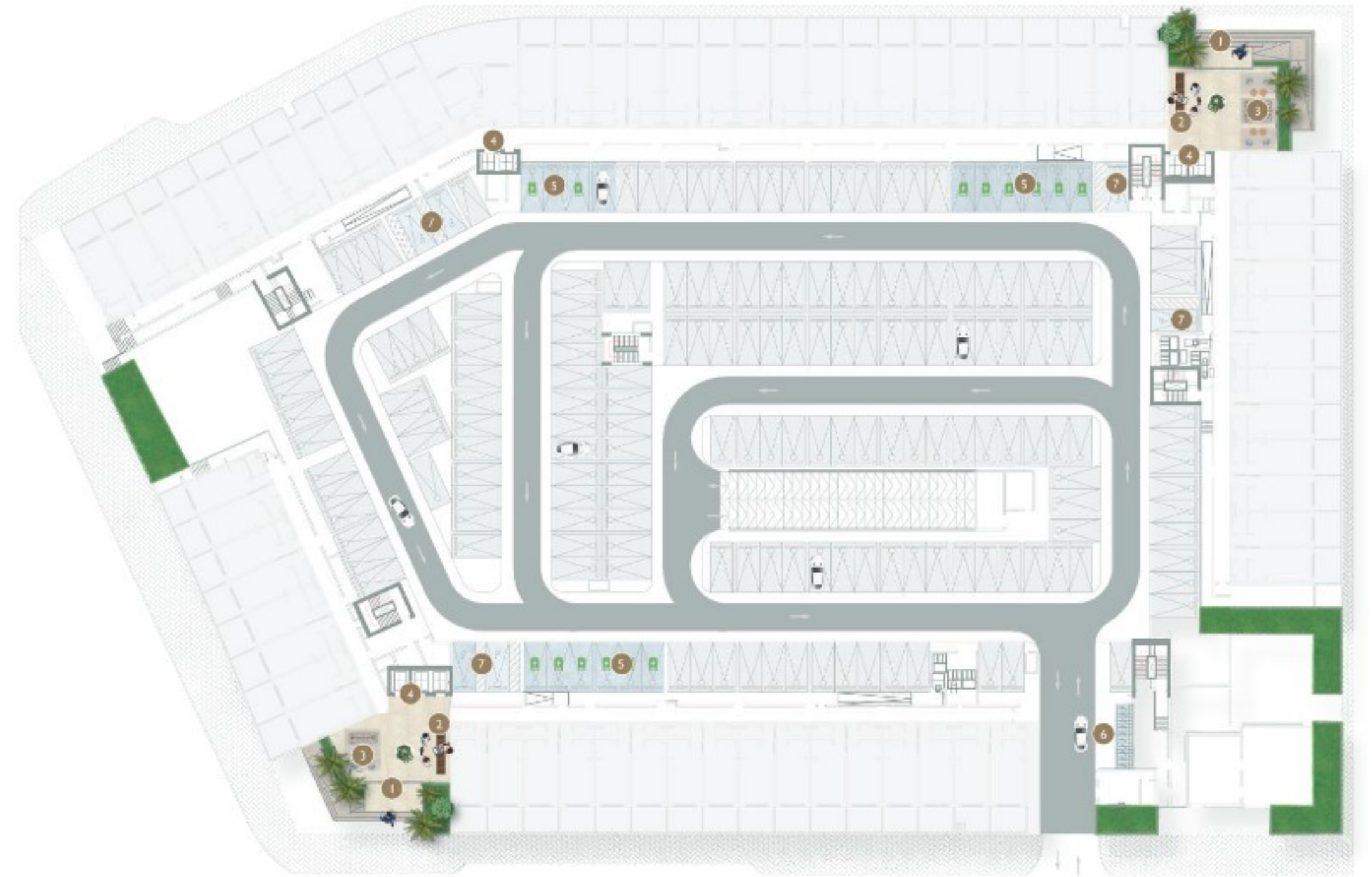


A cozy place to unwind and recharge after a busy day, the bedroom is a restful, warm place to retreat with its serene and soothing tones. Designed to bring the beauty of outdoors into one of the most personal space into your home, the bedroom at Oakley Square Residences maximizes natural light to provide a relaxed living space with fresh and neutral palettes.



GROUND FLOOR AMENITIES PLAN

- 01 MAIN ENTRANCE
- 02 LOBBY RECEPTION
- 03 LOBBY LOUNGE
- 04 LIFT LOBBIES
- 05 EV CHARGING STATIONS
- 06 BICYCLE PARKING
- 07 PARKING FOR PEOPLE OF DETERMINATION

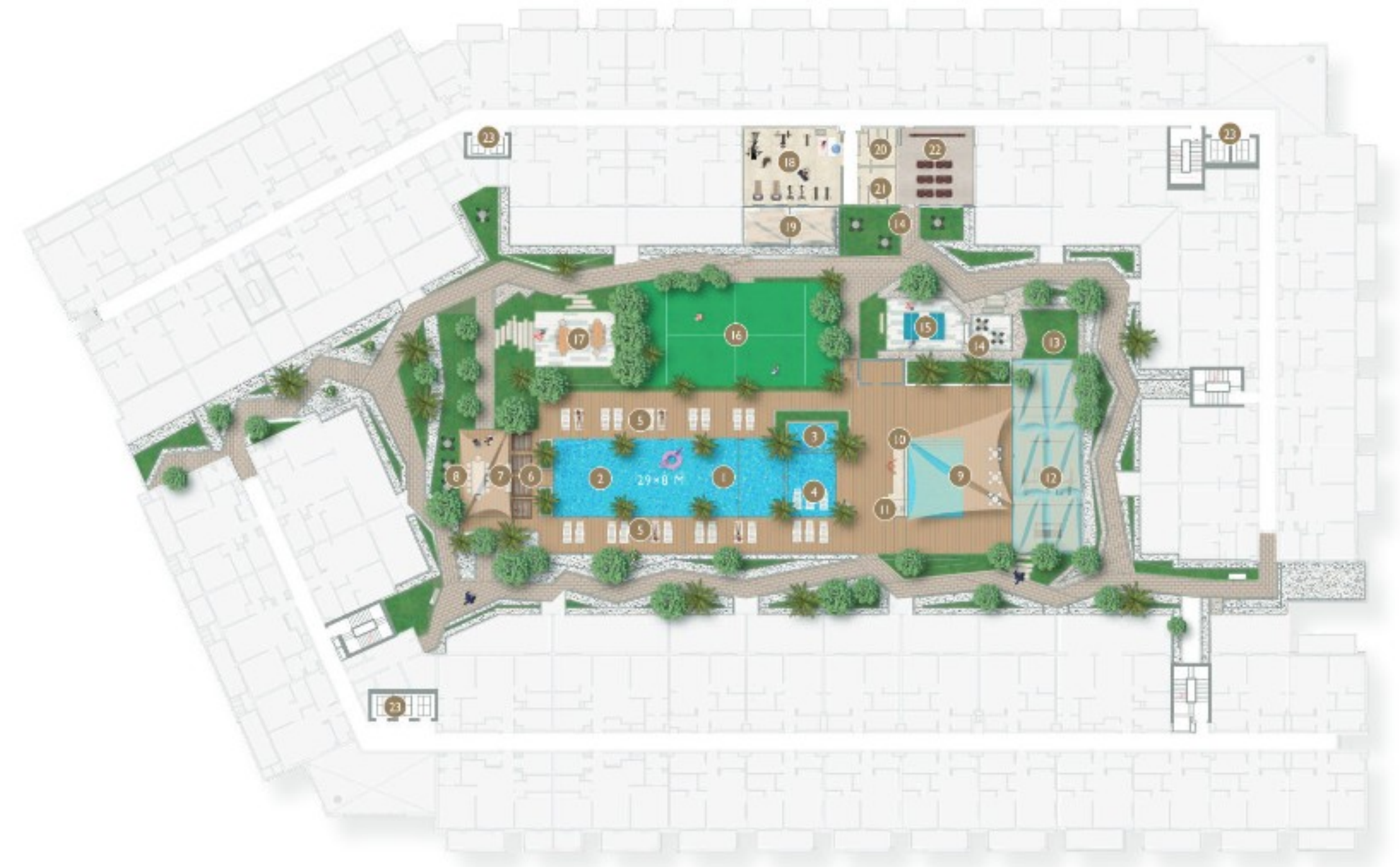


SCAN TO VIEW
THE INTERACTIVE
AMENITIES PLAN



FIRST FLOOR AMENITIES PLAN

- | | |
|---------------------------|-------------------------|
| 01 LEISURE POOL | 13 LANDSCAPE AREA |
| 02 LAP POOL | 14 OUTDOOR LOUNGE AREA |
| 03 POOL SPA | 15 GAMES TABLE ZONE |
| 04 BAJA SHELF | 16 PADEL TENNIS COURT |
| 05 POOL SUN LOUNGERS | 17 OUTDOOR TERRACE |
| 06 CABANAS | 18 INDOOR FITNESS AREA |
| 07 SHADED BARBEQUE AREA | 19 OUTDOOR FITNESS AREA |
| 08 OUTDOOR DINING AREA | 20 MALE CHANGE ROOM |
| 09 SHADED KIDS POOL | 21 FEMALE CHANGE ROOM |
| 10 OUTDOOR SHOWER | 22 CINEMA ROOM |
| 11 FAMILY BATHROOM | 23 LIFT LOBBIES |
| 12 OUTDOOR KIDS PLAY AREA | |



SCAN TO VIEW
THE INTERACTIVE
AMENITIES PLAN



RECENTLY HANDED-OVER PROJECTS



W I L T O N — TERRACES — INDULGE IN THE FUTURE OF LIVING

Standing high in one of Dubai's most iconic communities, Wilton Terraces is a thriving development where young entrepreneurs and new families can lead an affluent and exciting lifestyle. Overlooking some of the city's most spectacular landscapes, the development comprises of 283 residences and is home to a state-of-the-art fitness centre, kids' play area, a relaxing pool with water deck and barbecue area.

DELIVERED IN 2021
MOHAMMED BIN RASHID CITY



BELGRAVIA III CRAFTED FOR LIVING

Belgravia III comes with a fresh, cool palette with penny-round tiles, white joinery and light wood accents. The project is home to our largest courtyard yet, alongside two spacious, double-heighted lobbies. As a uniquely designed community, it offers 260 modern studios, 1 and 2-bedroom apartments, and townhouses, with a host of excellent amenities.

DELIVERED IN 2021
JUMEIRAH VILLAGE CIRCLE



ELLINGTON PROPERTIES PORTFOLIO



Set among a community of luxury and sustainability, Ellington House breathes new life into its idyllic surroundings. The building has an innate quality of blending in and standing out simultaneously, with dreamy, light-filled multifamily apartments overlooking Dubai Hills Golf Course and out across the city. From one of the Emirates' most prestigious locations, Ellington House offers a fresh perspective on living well and investing wisely.



Berkeley Place is Ellington Properties' latest design-led project that raises the bar in exceptional living. The residence features a slew of wellness and entertainment amenities that add to its exclusivity. Berkeley Place stands out for its distinct geometries as it soars against Dubai's dazzling city views. The rooftop captures the exclusivity of the residence with a slew of amenities including an infinity pool, a lavish lounge with viewing deck.



Kensington Waters serves as the perfect backdrop to lead a contented, modern, and fulfilling life. The development's design and architecture offer residents a unique space where they can experience life in full, grow, expand and thrive. Heightened ceilings, generous outdoor areas, generous storage spaces and wide windows provide room to energise, refresh and reboot, increasing productivity and encouraging self-initiative and an active lifestyle.



An icon of contemporary architecture designed for optimum community living, Belgravia Square encompasses 225 beautifully crafted studios, 1 and 2-bedroom apartments. With amenities such as two double-heighted lobbies, dramatic staircases and bespoke art installations, it's the perfect home to lead a fulfilling life.



The Sloane by Belgravia Heights is a Miami-inspired residential tower that echoes coastal vibes and a beachside lifestyle. The project encompasses an active and dramatic indoor and outdoor fitness centre, an outdoor cinema, an outdoor BBQ, kitchen and picnic areas, a lounge and lap pool, a dramatic and bright lobby, and a rooftop pet park.



With a Scandinavian design approach, a timeless grey palette and beautiful accents of white and warm beige tones, the look and feel of this development invites minimalism, simplicity and functionality, creating a more holistic living experience for our residents.



The project is designed for balanced lifestyles, where the apartments and residences flow uninterrupted into outdoor spaces and parks, seamlessly extending the interiors. It features a London-inspired aesthetic and an infinity edge swimming pool overlooking the park.



Wilton Terraces creates an atmosphere where young families can connect, share and grow. The project includes a fitness centre and yoga room, a children's pool and a family pool with a full lap, indoor and outdoor children's play areas, and BBQ areas.



DTI is a trendsetter for the new market standard, incorporating art and amenities in the heart of Dubai. The project reflects the unique and luxurious expression of residences, wrapped in an understated yet elegant facade, and offering a truly distinct setting inside out.



Harrington House exemplifies a comprehensive and balanced approach to urban living, inspired by the breathtaking Arabian Desert and its natural richness, via a plethora of interwoven features that cater to a happy and healthy existence. It is a development that embodies wellbeing, pleasure, and health thanks to neutral tones and a warm color palette.



The Portman captures the essence of contemporary, modern living with well-designed residences and family-friendly amenities. Located in Jumeirah Village Circle, one of the most sought-after communities in Dubai, the residential building is centered on the principle of balance and vibrancy with 173 residential units ranging from studios to 1 and 2-bedroom apartments.



An elegant mid-rise tower of grey and whites comprising of 101 curated residential units from studios, 1 and 2 bedroom apartments. Hamilton House's residents will benefit from the vast and sumptuous living space while enjoying a relaxed lifestyle.



